



Ashington Road, Fulham, SW6

For the finer things in property.

**STRUTT
& PARKER**

BNP PARIBAS GROUP

Ashington Road, Fulham, SW6

A superb three bedroom Victorian terrace house, well located on this popular street in the heart of Parsons Green.

3 Bedrooms | 2 Reception rooms | 3 Bathrooms
Garden | Residents parking | EPC Rating D

The property has been extensively redesigned and refurbished and benefits from a modern and stylish design process. There is spacious living space on the ground floor, and well proportioned bedrooms. There is potential to extend into the basement, subject to the usual planning permissions. The house also benefits from a good sized west facing garden.

Ashington Road runs south of New Kings Road towards Hurlingham Park and therefore benefits from the wealth of amenities in the local area, including shops and restaurants on New Kings Road. Putney Bridge and Parsons Green tube station are both nearby, as well as the bus links on New Kings Road. Hurlingham Park is moments away, and South Park and Bishops Park are close by.

Terms

Tenure: Freehold

Council Tax: Band G

Local Authority: The London Borough of Hammersmith and Fulham

Asking Price: £2,000,000

Fulham

701 Fulham Road, London SW6 5UL

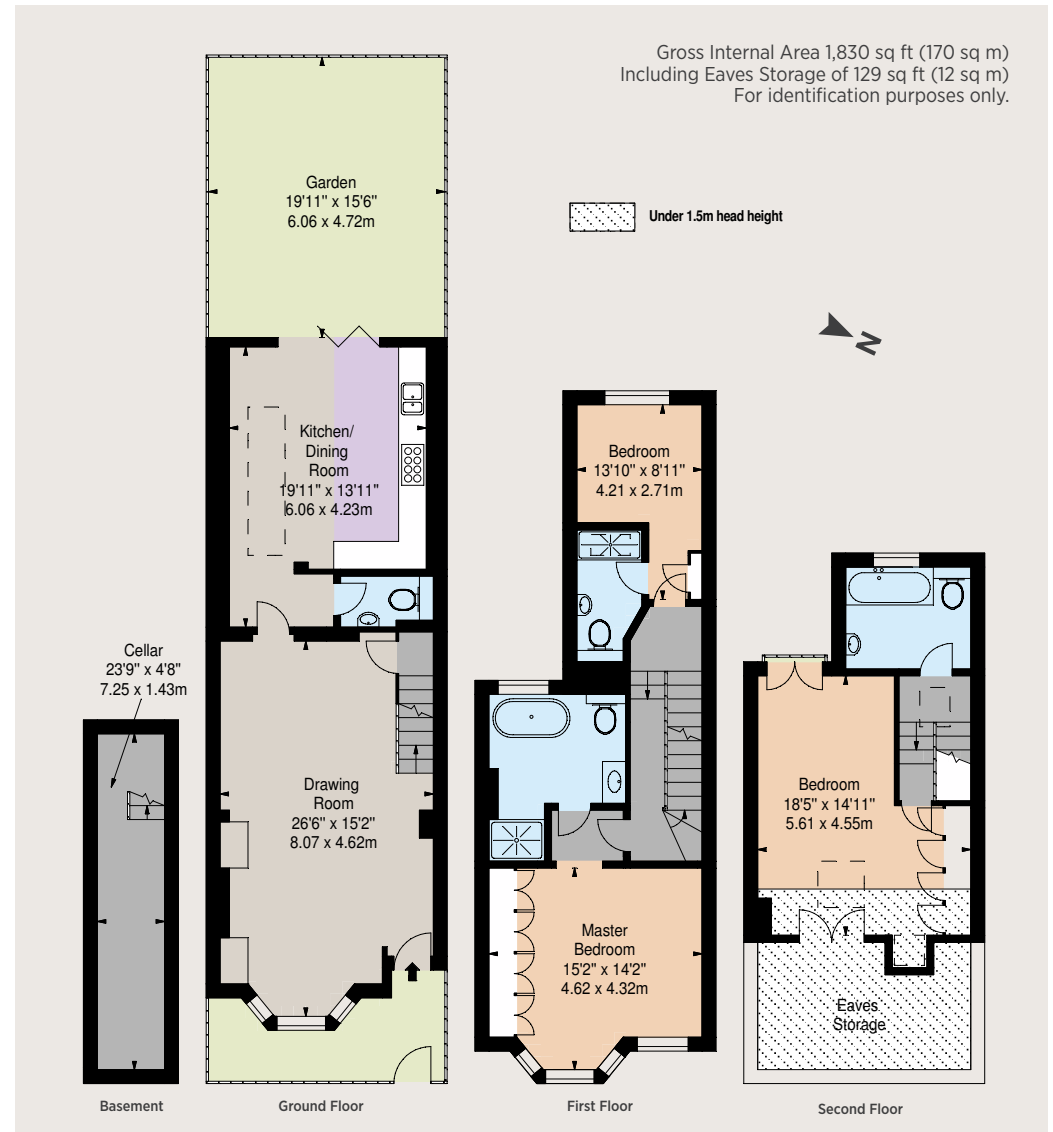
020 7731 7100

fulham@struttandparker.com



IMPORTANT NOTICE

Strutt & Parker gives notice that: 1. These particulars do not constitute an offer or contract or part thereof. 2. All descriptions, photographs and plans are for guidance only and should not be relied upon as statements or representations of fact. All measurements are approximate and not necessarily to scale. Any prospective purchaser must satisfy themselves of the correctness of the information within the particulars by inspection or otherwise. 3. Strutt & Parker does not have any authority to give any representations or warranties whatsoever in relation to this property (including but not limited to planning/building regulations), nor can it enter into any contract on behalf of the Vendor. 4. Strutt & Parker does not accept responsibility for any expenses incurred by prospective purchasers in inspecting properties which have been sold, let or withdrawn. 5. We are able to refer you to SPF Private Clients Limited ("SPF") for mortgage broking services, and to Alexander James Interiors ("AJI"), an interior design service. Should you decide to use the services of SPF, we will receive a referral fee from them of 25% of the aggregate of the fee paid to them by you for the arrangement of a mortgage and any fee received by them from the product provider. Should you decide to use the services of AJI, we will receive a referral fee of 10% of the net income received by AJI for the services they provide to you. 6. If there is anything of particular importance to you, please contact this office and Strutt & Parker will try to have the information checked for you. Photographs taken March 2024. Particulars prepared March 2024. Strutt & Parker is a trading style of BNP Paribas Real Estate Advisory & Property Management UK Limited.



Over 45 offices across England and Scotland,
including Prime Central London

For the finer things in property.

**STRUTT
& PARKER**

BNP PARIBAS GROUP