



Cornwall Gardens, SW7

STRUTT & PARKER
BNP PARIBAS GROUP

Cornwall Gardens, SW7

A beautifully finished two bedroom, two bathroom apartment (with lift and porter) situated in South Kensington.

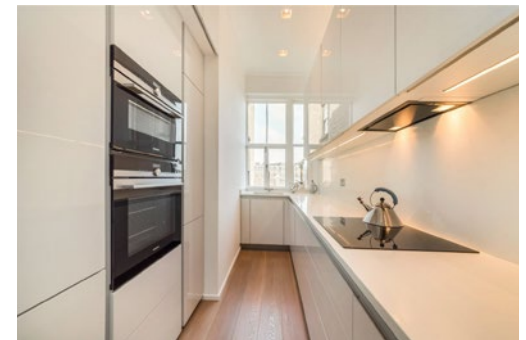
This impressive, newly renovated apartment is quietly situated on the third floor (with lift) of this smart portered building and boasts an abundance of natural light and far - reaching views across Kensington.

Principal Bedroom | Second Bedroom | Reception Room | Kitchen | Bathroom | Shower Room | Lift | Porter | EPC Rating D
EPC Rating TBC

The apartment has undergone an extensive refurbishment providing underfloor heating, German engineered kitchen and Carrara marble bathrooms. Providing two double bedrooms, two bathrooms, reception room and separate kitchen. The flat further benefits from a live in caretaker and recently refurbished communal parts.

Cornwall Gardens Court is a beautiful period building found on the most desirable North side of the square, facing South. The building is located at the far Western end of Cornwall Gardens in a perfectly quiet cul-de-sac with postcard perfect neighbouring residences.

Gloucester Road and South Kensington tube stations are a short walk away along with Kensington High Street, Kensington Palace Gardens, Hyde Park and a vast array of leading preparatory and senior schools.







CORNWALL GARDENS COURT, CORNWALL GARDENS, SW7

Gross internal area 805 sq ft (74.78 sq m)

CH = Ceiling Heights

For identification purposes only.

For illustrative purposes only – not to scale

The position and size of doors, windows, appliances and other features are approximate only.

Terms

Tenure: Leasehold 101 years (approx)

Local Authority: The Royal Borough of Kensington and Chelsea

Service Charge: £3,670 per annum

Price: £1,450,000

South Kensington

90 Old Brompton Road, London, SW7 3LQ

020 7581 7000

southken@struttandparker.com



IMPORTANT NOTICE: Strutt & Parker gives notice that: 1. These particulars do not constitute an offer or contract or part thereof. 2. All descriptions, photographs and plans are for guidance only and should not be relied upon as statements or representations of fact. All measurements are approximate and not necessarily to scale. Any prospective purchaser must satisfy themselves of the correctness of the information within the particulars by inspection or otherwise. 3. Strutt & Parker does not have any authority to give any representations or warranties whatsoever in relation to this property (including but not limited to planning/building regulations), nor can it enter into any contract on behalf of the Vendor. 4. Strutt & Parker does not accept responsibility for any expenses incurred by prospective purchasers in inspecting properties which have been sold, let or withdrawn. 5. We are able to refer you to SPF Private Clients Limited ("SPF") for mortgage broking services, and to Alexander James Interiors ("AJI"), an interior design service. Should you decide to use the services of SPF, we will receive a referral fee from them of 25% of the aggregate of the fee paid to them by you for the arrangement of a mortgage and any fee received by them from the product provider. Should you decide to use the services of AJI, we will receive a referral fee of 10% of the net income received by AJI for the services they provide to you. 6. If there is anything of particular importance to you, please contact this office and Strutt & Parker will try to have the information checked for you. Photographs taken August XXXX 2000. Particulars prepared XXXX 2000. Strutt & Parker is a trading style of BNP Paribas Real Estate Advisory & Property Management UK Limited.