



Ladbroke Crescent, Notting Hill, W11

For the finer things in property.

**STRUTT
& PARKER**

BNP PARIBAS GROUP

Ladbroke Crescent, Notting Hill, W11

An impressive four bedroom townhouse with a charming south facing patio garden.

Occupying approximately 2,406 sqft, this stylish and well-designed house has excellent entertaining space and impressive proportions, including an open plan ground floor kitchen/dining room and a beautiful first floor drawing room. The house has four bedrooms, with two studies and a secondary kitchen/family room, offering flexible living accommodation throughout.

Ladbroke Crescent is located just off Ladbroke Grove, close to shopping facilities of Portobello Road, Westbourne Grove and Notting Hill Gate. The transport links and underground stations (Ladbroke Grove) are situated nearby.

Entrance hall | Kitchen/dining room | Drawing room | Four bedrooms | Two studies | Two bathrooms | Shower room | Guest cloakroom | Kitchen/family room | Vault storage | Terrace Garden | EPC Rating D

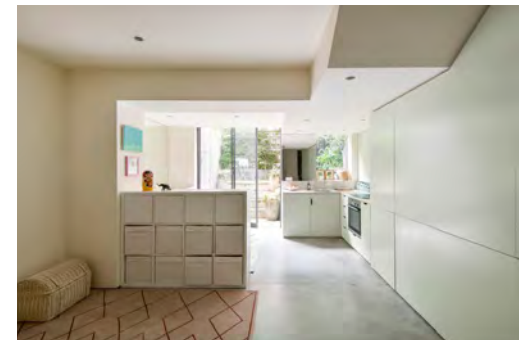
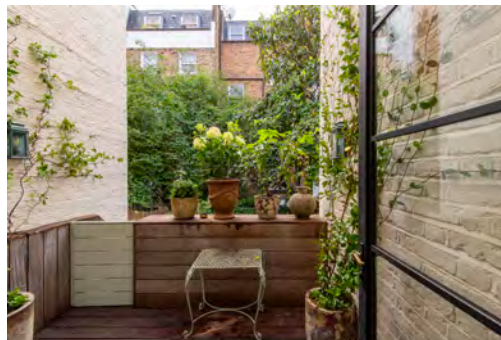
Terms

Tenure: Freehold

Council Tax: Band G

Local Authority: The Royal Borough of Kensington and Chelsea

Price: £4,250,000 Subject to Contract







Notting Hill

303 Westbourne Grove, London, W11 2QA

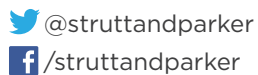
020 7221 1111

nottinghill@struttandparker.com

struttandparker.com

IMPORTANT NOTICE

Strutt & Parker gives notice that: 1. These particulars do not constitute an offer or contract or part thereof. 2. All descriptions, photographs and plans are for guidance only and should not be relied upon as statements or representations of fact. All measurements are approximate and not necessarily to scale. Any prospective purchaser must satisfy themselves of the correctness of the information within the particulars by inspection or otherwise. 3. Strutt & Parker does not have any authority to give any representations or warranties whatsoever in relation to this property (including but not limited to planning/building regulations), nor can it enter into any contract on behalf of the Vendor. 4. Strutt & Parker does not accept responsibility for any expenses incurred by prospective purchasers in inspecting properties which have been sold, let or withdrawn. 5. We are able to refer you to SPF Private Clients Limited ("SPF") for mortgage broking services, and to Alexander James Interiors ("AJI"), an interior design service. Should you decide to use the services of SPF, we will receive a referral fee from them of 25% of the aggregate of the fee paid to them by you for the arrangement of a mortgage and any fee received by them from the product provider. Should you decide to use the services of AJI, we will receive a referral fee of 10% of the net income received by AJI for the services they provide to you. 6. If there is anything of particular importance to you, please contact this office and Strutt & Parker will try to have the information checked for you. Photographs taken November 2023. Particulars prepared September 2022. Strutt & Parker is a trading style of BNP Paribas Real Estate Advisory & Property Management UK Limited.



Over 45 offices across England and Scotland,
including Prime Central London

For the finer things in property.

