



OLD CHURCH STREET
CHELSEA SW3

Found on one of the most historic and charming streets in the Royal Borough of Kensington & Chelsea, this stunning newly modernised, turnkey, four/five-bedroom house has a lovely garden, tons of entertaining space plus a separate outbuilding.





Dating back to the early 18th century, London's 18 Old Church Street is a striking four/ five-bedroom home that was once positioned directly behind the famous Chelsea Porcelain Works – the first and most significant established factory in England, following the European discovery of soft-paste porcelain.

Being one of the oldest homes on the road, 18 Old Church Street provides an impressive amount of space, circa 2,900 sq ft, which has been achieved through a considerable extension to the rear of the property, as well as into the basement.

During the extensive refurbishment works to modernise the home, a vast amount of pottery and porcelain pieces were excavated and submitted to the British Museum for analysis, which were sourced back to the original Chelsea Porcelain Works.





Operating between 1745-69 the Chelsea Porcelain Works produced bespoke collections for the wealthiest clients. Notable creations that still exist today include the 'Mecklenburg Service' commissioned by King George III and the extensive botanical tableware acquired by Queen Elizabeth The Queen Mother, which still remain in Royal ownership.

Retaining its original Georgian exterior, 18 Old Church Street is accessed via a stepped entrance from the street front onto the ground floor. The entrance hall leads onto a double-aspect drawing room and reception room, which leads onto the spacious rear garden through full-size bi-fold doors.

Accessed through the secluded rear patio garden is a two-storey converted studio, which is currently used as a private office/media gym room, however, it could easily act as private staff quarters or space for an elderly relative or mature dependent.

The basement provides spacious guest/staff accommodation to include a large sleeping area, private study, shower room and utility room.

LOCATION

Dating back to 1566, Old Church Street is the oldest recorded street in Chelsea and has had many high-profile residents over the years. One of the most notable was Judy Campbell, who lived directly across the road at 21 Old Church Street between 1974-2004, which is recognised by a blue plaque. She was a successful film and theatre star over a near 70-year career, as well as being widely known as Noel Coward's muse.

One of London's most historic patches, just along from 18 Old Church Street is the former Wesleyan Chapel, which once counted regular attendees such as Queen Victoria, retail magnate Peter Jones and Thomas Carlyle. On the corner of Old Church Street is Chelsea Old Church that was first built by Sir Thomas More and bears his statue at the front of the building.







The upper floors are the main living quarters, with the principal bedroom suite and separate cloakroom occupying the entire first floor. Two guest bedrooms and a guest bathroom are present on the second floor.

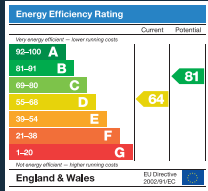
ACCOMMODATION

- Principal suite
- Four further bedrooms
- Three bathrooms
- Reception room
- Drawing room
- Dining room
- Sitting room
- Utility rooms
- Outbuilding (studio/office & cinema room)
- Garden
- Vault

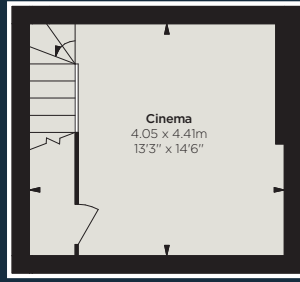
TERMS

Listing
Grade II
Tenure
Freehold
Guide Price
£5,675,000
Local Authority
The Royal Borough of Kensington & Chelsea
Council Tax
Band H

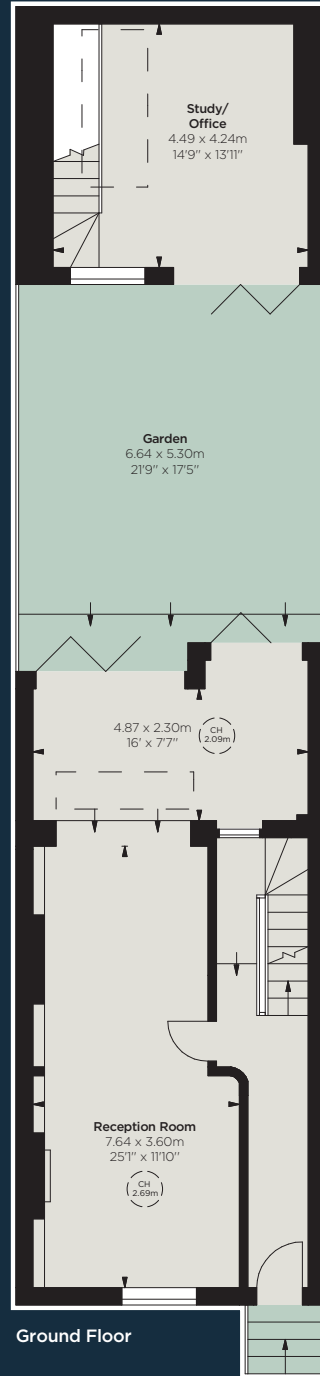




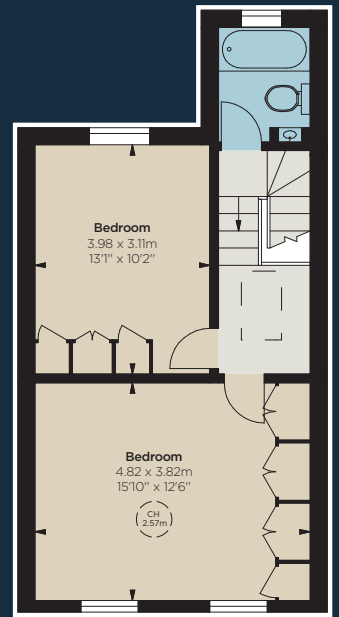
Approximate Gross Internal Area
 2,896 sq ft
 269.04 sq m
 including outbuilding
 of approximately
 35.39 sq m / 381 sq ft



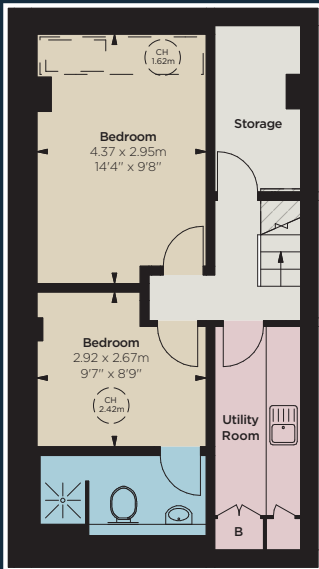
Lower Ground Floor



Ground Floor



Second Floor



Basement



Lower Ground Floor



First Floor

JOHN D WOOD & CO.

020 3151 0665

9 Cale Street, Chelsea Green, London, SW3 3QS
 cst.sales@johndwood.co.uk

johndwood.co.uk

STRUTT & PARKER

BNP PARIBAS GROUP

CHELSEA SW10

020 7373 1010

struttandparker.com

THE BROCHURE

IMPORTANT NOTICE: Strutt & Parker and John D Wood give notice that: 1. These particulars do not constitute an offer or contract or part thereof. 2. All descriptions, photographs and plans are for guidance only and should not be relied upon as statements or representations of fact. All measurements are approximate and not necessarily to scale. Any prospective purchaser must satisfy themselves of the correctness of the information within the particulars by inspection or otherwise. 3. Strutt & Parker or John D Wood do not have any authority to give any representations or warranties whatsoever in relation to this property (including but not limited to planning/building regulations), nor can it enter into any contract on behalf of the Vendor. 4. Strutt & Parker or John D Wood do not accept responsibility for any expenses incurred by prospective purchasers in inspecting properties which have been sold, let or withdrawn. 5. We are able to refer you to SPF Private Clients Limited ("SPF") for mortgage broking services, and to Alexander James Interiors ("AJI"), an interior design service. Should you decide to use the services of SPF, we will receive a referral fee from them of 25% of the aggregate of the fee paid to them by you for the arrangement of a mortgage and any fee received by them from the product provider. Should you decide to use the services of AJI, we will receive a referral fee of 10% of the net income received by AJI for the services they provide to you. 6. If there is anything of particular importance to you, please contact this office and Strutt & Parker will try to have the information checked for you. **Photographs taken July 2023. Particulars prepared November 2023.** Strutt & Parker is a trading style of BNP Paribas Real Estate Advisory & Property Management UK Limited. 07/05/24S&P-231128B-05GG