



Princes Mews, Notting Hill, W2

For the finer things in property.

**STRUTT
& PARKER**

BNP PARIBAS GROUP

Princes Mews, Notting Hill, W2

An immaculate and stylish two bedroom mews house comprised over three floors.

Located on one of Notting Hills most sought after cobbled mews the house offers spacious, contemporary living with two floors of entertaining space. There are two bedrooms and two bath/shower rooms on the top floor.

Princes Mews is a charming cobbled mews which is moments from the shops, restaurants and cultural landmarks of Notting Hill. Bayswater, Queensway and Notting Hill Gate (Central and Circle/District lines) underground stations are very nearby, along with the green spaces of Kensington Gardens.

Kitchen/dining room | Reception room
Two bedrooms with en suite bath/shower rooms
Juliette balcony | EPC rating D

Terms

Tenure: Freehold

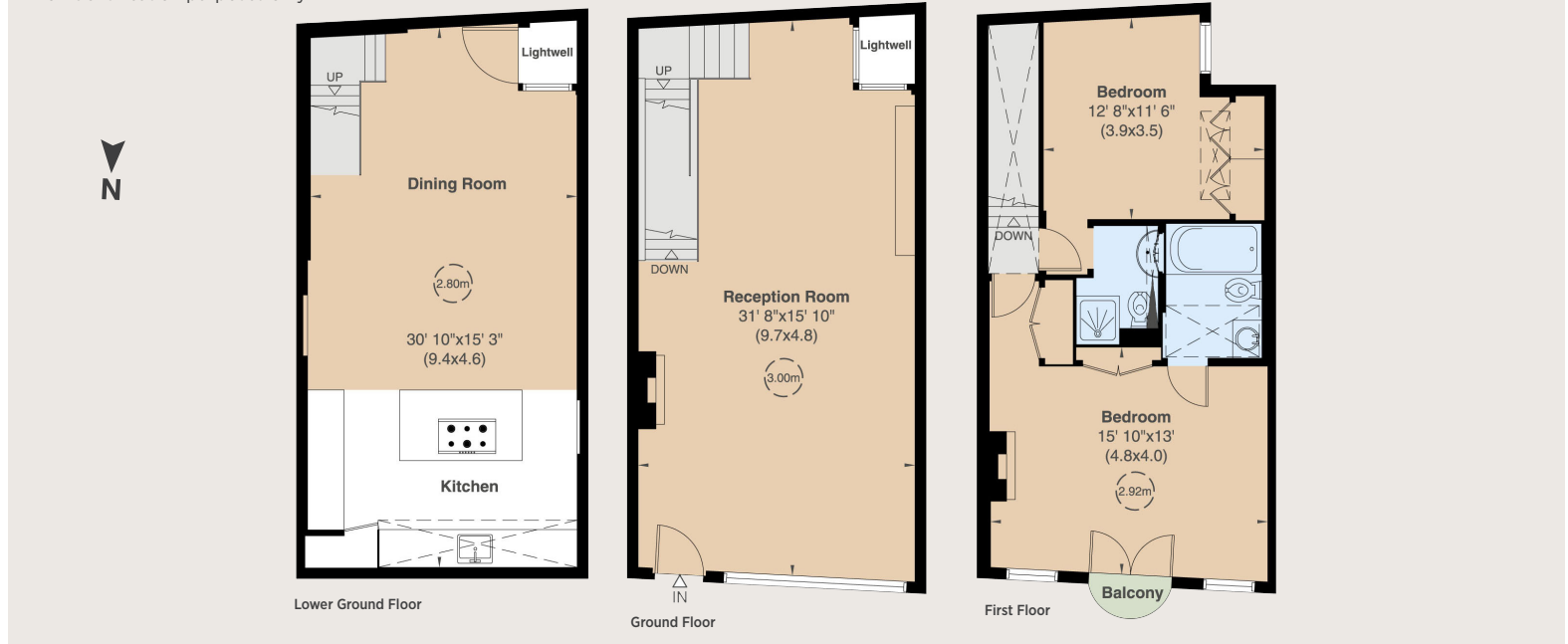
Council Tax: Band G

Local Authority: The Royal Borough of Kensington and Chelsea

Asking Price: £2,650,000



Gross Internal Area 1,430 sq ft (133 sq m)
For identification purposes only.



IMPORTANT NOTICE

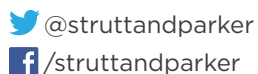
Strutt & Parker gives notice that: 1. These particulars do not constitute an offer or contract or part thereof. 2. All descriptions, photographs and plans are for guidance only and should not be relied upon as statements or representations of fact. All measurements are approximate and not necessarily to scale. Any prospective purchaser must satisfy themselves of the correctness of the information within the particulars by inspection or otherwise. 3. Strutt & Parker does not have any authority to give any representations or warranties whatsoever in relation to this property (including but not limited to planning/building regulations), nor can it enter into any contract on behalf of the Vendor. 4. Strutt & Parker does not accept responsibility for any expenses incurred by prospective purchasers in inspecting properties which have been sold, let or withdrawn. 5. We are able to refer you to SPF Private Clients Limited ("SPF") for mortgage broking services, and to Alexander James Interiors ("AJI"), an interior design service. Should you decide to use the services of SPF, we will receive a referral fee from them of 25% of the aggregate of the fee paid to them by you for the arrangement of a mortgage and any fee received by them from the product provider. Should you decide to use the services of AJI, we will receive a referral fee of 10% of the net income received by AJI for the services they provide to you. 6. If there is anything of particular importance to you, please contact this office and Strutt & Parker will try to have the information checked for you. Photographs taken June 2023. Particulars prepared June 2023. Strutt & Parker is a trading style of BNP Paribas Real Estate Advisory & Property Management UK Limited.

303 Westbourne Grove, London, W11 2QA

020 7221 1111

nottinghill@struttandparker.com

struttandparker.com



Over 45 offices across England and Scotland,
including Prime Central London

For the finer things in property.

