



Rumbold Road, Fulham, SW6

For the finer things in property.

**STRUTT  
& PARKER**

BNP PARIBAS GROUP



# Rumbold Road, Fulham, SW6

A superb five bedroom house on this prime road in the Moore Park Estate area of Fulham.

5 Bedrooms | 1 Reception room | 5 Bathrooms  
Garden | Roof terrace | Residents parking  
EPC Rating C

The property offers excellent entertaining space on the ground floor with open plan double reception room and a large eat in kitchen which has the very rare benefit of a southwest facing garden with direct access to the garage. The first floor comprises a study with direct access to the roof terrace, a family bathroom and an enormous principal suite spanning from the front to the rear of the property. There are two bedrooms and a bathroom on the second floor and a large en suite bedroom on the third floor.

Rumbold Road is located off the New Kings Road, close to West Chelsea, in the popular area known as the 'Moore Park Estate' and is therefore close to the transport and shopping facilities of the area, including the Kings Road and Fulham Broadway. The green space of Eel Brook Common is nearby.

## Terms

**Tenure:** Freehold

**Council Tax:** Band G

**Local Authority:** The London Borough of Hammersmith and Fulham

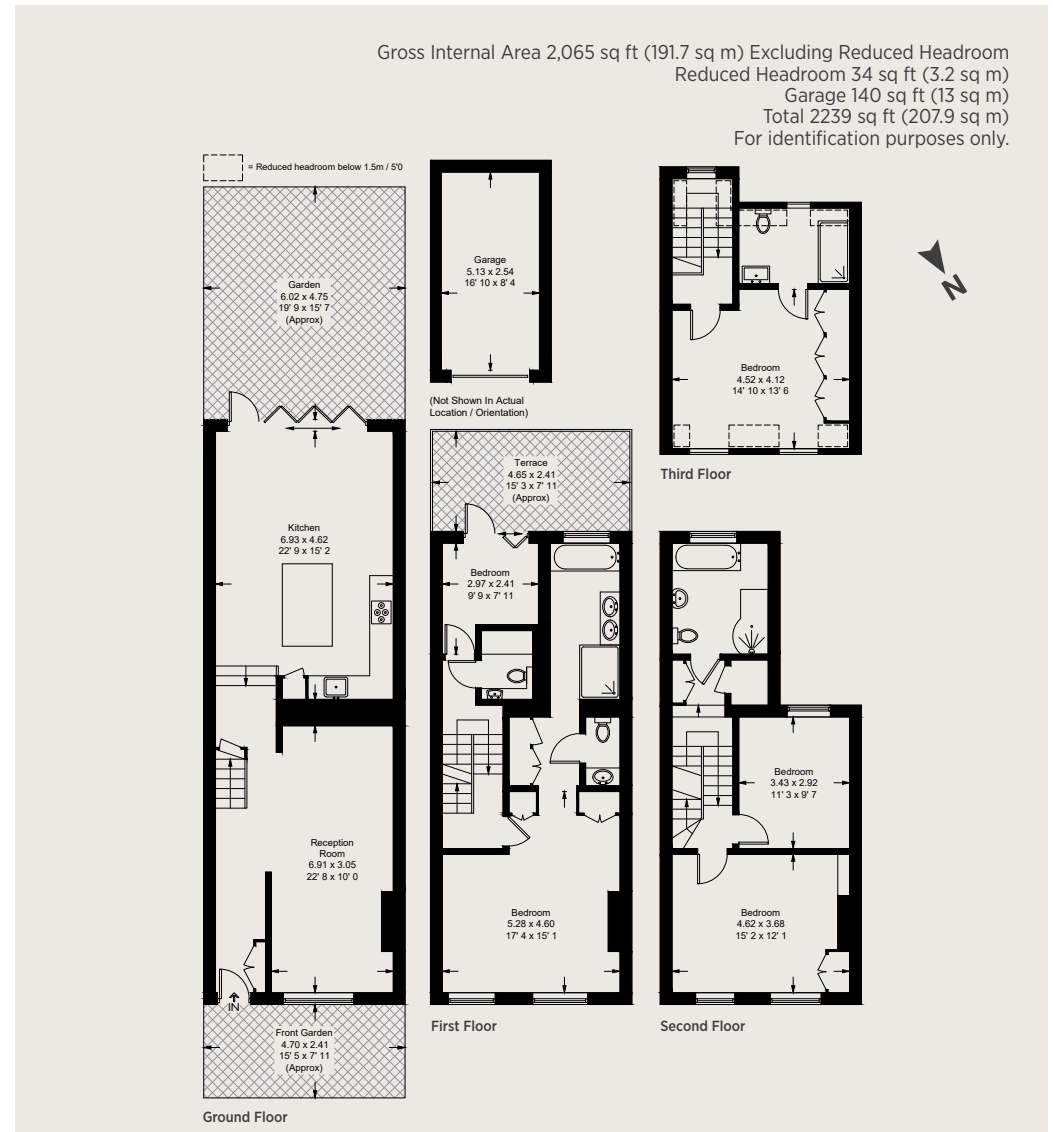
**Asking Price:** £2,650,000

## Fulham

701 Fulham Road, London SW6 5UL

**020 7731 7100**

fulham@struttandparker.com



### IMPORTANT NOTICE

Strutt & Parker gives notice that: 1. These particulars do not constitute an offer or contract or part thereof. 2. All descriptions, photographs and plans are for guidance only and should not be relied upon as statements or representations of fact. All measurements are approximate and not necessarily to scale. Any prospective purchaser must satisfy themselves of the correctness of the information within the particulars by inspection or otherwise. 3. Strutt & Parker does not have any authority to give any representations or warranties whatsoever in relation to this property (including but not limited to planning/building regulations), nor can it enter into any contract on behalf of the Vendor. 4. Strutt & Parker does not accept responsibility for any expenses incurred by prospective purchasers in inspecting properties which have been sold, let or withdrawn. 5. We are able to refer you to SPF Private Clients Limited ("SPF") for mortgage broking services, and to Alexander James Interiors ("AJI"), an interior design service. Should you decide to use the services of SPF, we will receive a referral fee from them of 25% of the aggregate of the fee paid to them by you for the arrangement of a mortgage and any fee received by them from the product provider. Should you decide to use the services of AJI, we will receive a referral fee of 10% of the net income received by AJI for the services they provide to you. 6. If there is anything of particular importance to you, please contact this office and Strutt & Parker will try to have the information checked for you. Photographs taken March 24. Particulars prepared March 24. Strutt & Parker is a trading style of BNP Paribas Real Estate Advisory & Property Management UK Limited.



Over 45 offices across England and Scotland,  
including Prime Central London

**For the finer things in property.**

