



Finglesham Well, Finglesham, Deal, Kent

For the finer things in property.

**STRUTT
& PARKER**

BNP PARIBAS GROUP

Finglesham Well

The Street, Finglesham, Deal, Kent CT14 0NE

A delightful village house together with a self-contained annexe, all set in pretty gardens

Deal town centre & mainline station 3.3 miles (London St Pancras from 86 minutes), A2 7.5 miles, Dover 11 miles, Canterbury 15 miles

Finglesham Well: Entrance porch | Drawing room | Sitting room Dining room | Kitchen Utility | Cloakroom | Cellar | Principal bedroom with en suite shower room | 3 Further bedrooms Walk-in wardrobe | Shower room

Annexe: Sitting room | Kitchen | Bedroom Bathroom

Carport/garage | Workshop | Gardens | EPC rating D

The property

Finglesham Well is a charming village home offering flexible accommodation with plenty of character and is set in pretty gardens.

The front door opens to a welcoming drawing room arranged around a wonderful open fire. Wooden floors and exposed beams are found both here and in the bright sitting room beyond, which has a door opening to the garden.

The kitchen is neatly fitted with a range of wall and floor units and is open to the dining room, which has a vaulted panelled ceiling. With a brick fireplace housing a wood burning stove to one wall and French doors to the garden, this is a fabulous open-plan family space at the heart of the house. There is a useful utility room with a back door and a cloakroom

Stairs rise to a bright landing. The principal bedroom is double aspect and has a generous en suite shower room. There is another bedroom and a shower room on this level with a further two bedrooms on the second floor. A large walk-in wardrobe offers useful storage.

Returning to the ground floor there is a super one bedroom annexe. With internal accesses through the adjoining kitchens, the annexe also has a separate front door. A good sized sitting room is flooded with light and has French doors opening to the garden. The bedroom has an en suite bathroom. This provides very comfortable, self-contained accommodation - perfect for multi-generational living, yet which could easily be used within the main house if desired.

Outside

Finglesham Well is well set in its beautiful, established gardens with well-kept lawns and colourful borders; these are to the front, side and rear.

An electric five-bar gate opens to a gravel driveway which arrives at the front of the house and an oak-framed carport/garage, which provides excellent storage.

Behind the house, a tucked away courtyard garden is laid to lawn, with a sheltered terrace accessed from the sitting room. There is a further terrace next to the house within the main garden adjacent to an ornamental pond.

There is also a workshop, greenhouse and vegetable garden.

General

Local Authority: Dover District Council

Services: Mains electricity and water, Calor gas bottles for cooking, private drainage (details of system to be confirmed); oil heating

Council Tax: House - Band F; Annexe - Band A

Tenure: Freehold

Guide Price: £850,000











Annexe



Annexe



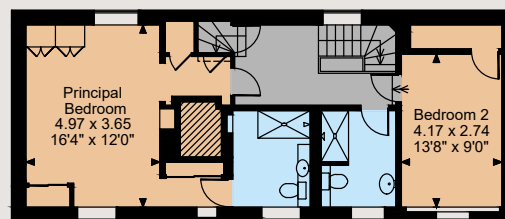
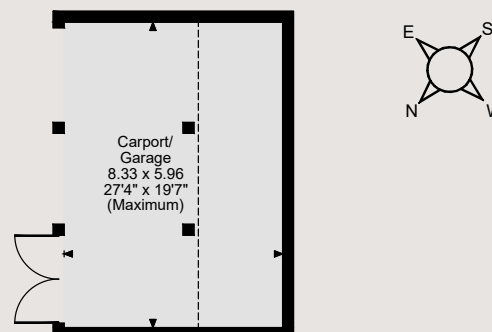
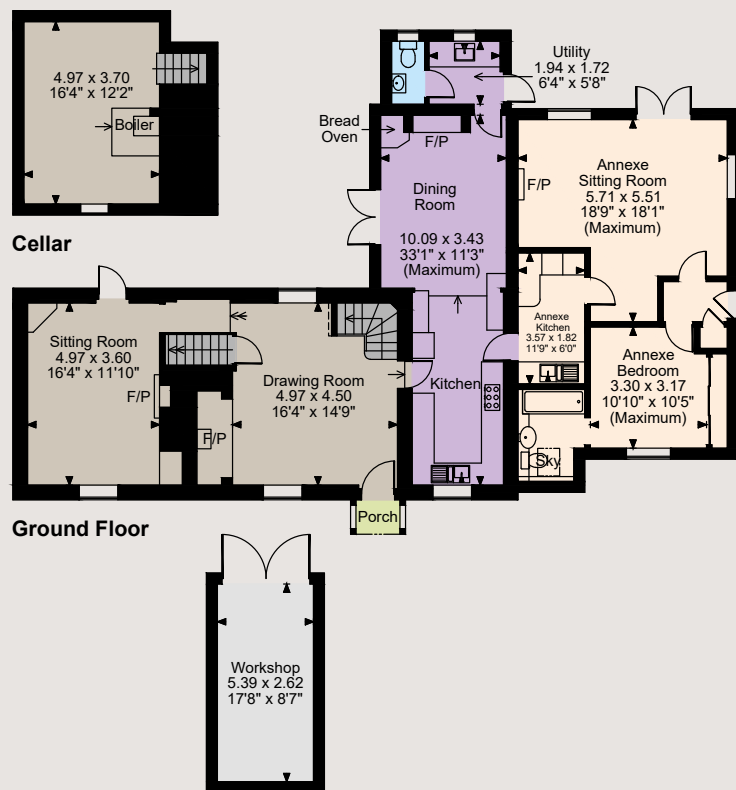
Annexe



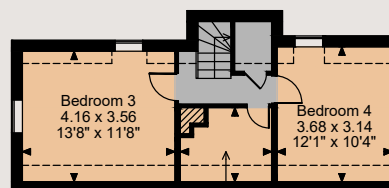
Annexe



Finglesham, Well The Street, Finglesham, Kent
Main House internal area 2,736 sq ft (254 sq m)
Carport/Garage internal area 328 sq ft (30 sq m)
Workshop internal area 152 sq ft (14 sq m)
For identification purposes only.



First Floor



Second Floor

The position & size of doors, windows, appliances and other features are approximate only.

□ □ □ □ Denotes restricted head height

© ehouse. Unauthorised reproduction prohibited. Drawing ref. dig/8549484/SLU

Location

Finglesham village is found just outside the popular coastal town of Deal. There is a pub at Finglesham and nearby Sholden has a village store and a primary school. Deal has a charming award-winning high street, and a long, uninterrupted stretch of beach. There is an array of shops, restaurants, pubs and cafes in the town, as well as superb schools, supermarkets and leisure facilities.

Dover is within easy reach, providing additional shopping and leisure facilities and access to the Continent. The A2 is also easily accessible, providing routes towards Canterbury. There are a variety of first-class golf courses in the area, including links golf at the famous Royal St George's Golf Club at Sandwich, and the Royal Cinque Ports Golf Club.

Directions

From Canterbury: Leave on the A257 towards Sandwich. Follow the A257 for 11 miles. At the roundabout approaching Sandwich, take the third exit onto the A256. At the next roundabout, take the first exit onto Deal Road, then at the following roundabout take the second exit to continue on Deal Road (A258). After 2 miles, turn right onto Burgess Green, then after 0.5 mile, turn right onto The Street, where the property will be found on the left.

Canterbury

2 St Margaret's Street, Canterbury, Kent CT1 2SL

01227 473700

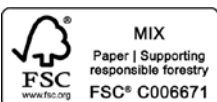
canterbury@struttandparker.com
struttandparker.com

@struttandparker

/struttandparker

Over 45 offices across England and Scotland, including Prime Central London

IMPORTANT NOTICE: Strutt & Parker gives notice that: 1. These particulars do not constitute an offer or contract or part thereof. 2. All descriptions, photographs and plans are for guidance only and should not be relied upon as statements or representations of fact. All measurements are approximate and not necessarily to scale. Any prospective purchaser must satisfy themselves of the correctness of the information within the particulars by inspection or otherwise. 3. Strutt & Parker does not have any authority to give any representations or warranties whatsoever in relation to this property (including but not limited to planning/building regulations), nor can it enter into any contract on behalf of the Vendor. 4. Strutt & Parker does not accept responsibility for any expenses incurred by prospective purchasers in inspecting properties which have been sold, let or withdrawn. 5. We are able to refer you to SPF Private Clients Limited ("SPF") for mortgage broking services, and to Alexander James Interiors ("AJI"), an interior design service. Should you decide to use the services of SPF, we will receive a referral fee from them of 25% of the aggregate of the fee paid to them by you for the arrangement of a mortgage and any fee received by them from the product provider. Should you decide to use the services of AJI, we will receive a referral fee of 10% of the net income received by AJI for the services they provide to you. 6. If there is anything of particular importance to you, please contact this office and Strutt & Parker will try to have the information checked for you. Photographs taken April 2023. Particulars prepared November 2023. Strutt & Parker is a trading style of BNP Paribas Real Estate Advisory & Property Management UK Limited



For the finer things in property.

