

Lizmans Terrace

Kensington, W8



**STRUTT
& PARKER**

BNP PARIBAS GROUP

An immaculate second floor apartment offering 526 sq. ft. of stylish living a short distance from Holland Park and Kensington High Street.

Featuring a bright west facing reception room, modern fitted kitchen, spacious double bedroom with fitted wardrobes and a contemporary modern bathroom.



1 RECEPTION ROOM



1 BEDROOM



1 BATHROOM



LEASEHOLD



526 SQ FT



**ASKING PRICE
£695,000**



The property

Positioned on the second floor within a well-maintained period building. The property is presented in immaculate condition throughout, featuring a bright and well-proportioned reception room, modern fully fitted kitchen, generous double bedroom with ample storage. The apartment also benefits from a sleek contemporary bathroom. The property will make an ideal first time purchase, pied-à-terre or investment opportunity in one of London's most prestigious neighbourhoods.

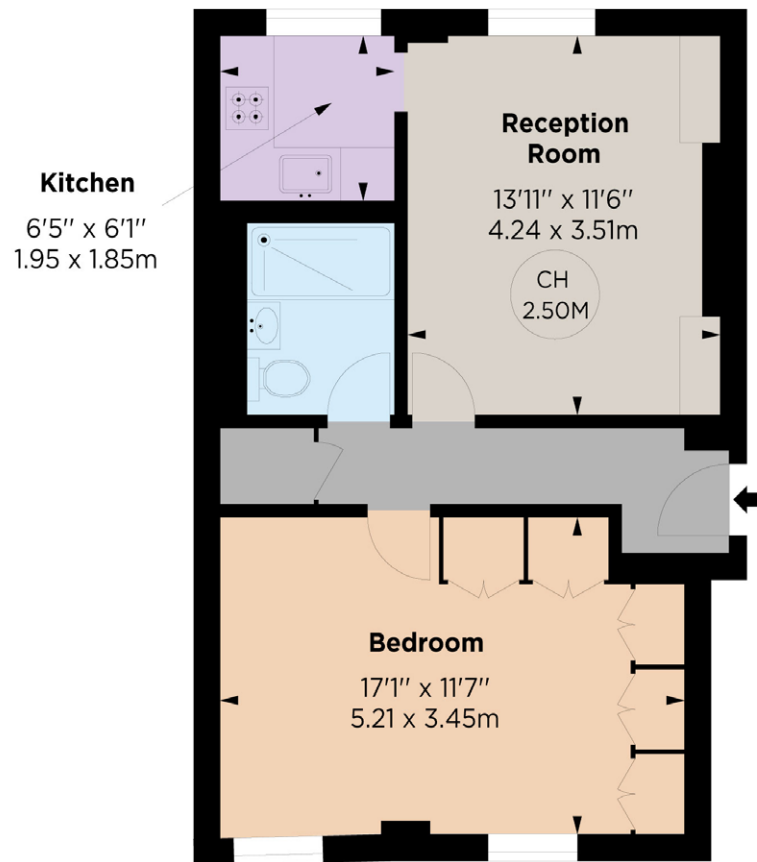
Location

Lizmans Terrace is a delightful and particularly sought-after address close to local amenities including Gloucester Road and South Kensington with a vast array of restaurants, bars and shopping. Easy transport links include Earls Court tube station for District, Piccadilly and Circle Lines, with an additional benefit of easy access to motorways.





Key :
CH - Ceiling Height



SECOND FLOOR

Floorplans

Gross internal area 526 sq ft (48.89 sq m)
For identification purposes only.

General

Tenure: Leasehold of 125 years from 1st January 2001

Local Authority: The Royal Borough of Kensington and Chelsea

Service Charge: £150 per month

Ground Rent: £200 per annum

Council Tax: Band E

EPC Rating: C

Parking: Resident permit parking available

Broadband: High speed internet available

IMPORTANT NOTICE: Strutt & Parker gives notice that: 1. These particulars do not constitute an offer or contract or part thereof. 2. All descriptions, photographs and plans are for guidance only and should not be relied upon as statements or representations of fact. All measurements are approximate and not necessarily to scale. Any prospective purchaser must satisfy themselves of the correctness of the information within the particulars by inspection or otherwise. 3. Strutt & Parker does not have any authority to give any representations or warranties whatsoever in relation to this property (including but not limited to planning/building regulations), nor can it enter into any contract on behalf of the Vendor. 4. Strutt & Parker does not accept responsibility for any expenses incurred by prospective purchasers in inspecting properties which have been sold, let or withdrawn. 5. We are able to refer you to SPF Private Clients Limited ("SPF") for mortgage broking services, and to Alexander James Interiors ("AJI"), an interior design service. Should you decide to use the services of SPF, we will receive a referral fee from them of 25% of the aggregate of the fee paid to them by you for the arrangement of a mortgage and any fee received by them from the product provider. Should you decide to use the services of AJI, we will receive a referral fee of 10% of the net income received by AJI for the services they provide to you. 6. If there is anything of particular importance to you, please contact this office and Strutt & Parker will try to have the information checked for you. Photographs taken August 2025. Particulars prepared August 2025. Strutt & Parker is a trading style of BNP Paribas Real Estate Advisory & Property Management UK Limited

Kensington

103 Kensington Church Street, London W8 7LN

020 7938 3666

kensington@struttandparker.com
struttandparker.com



@struttandparker

Over 50 offices across England and Scotland,
including Prime Central London

For the finer things in property.

**STRUTT
& PARKER**

BNP PARIBAS GROUP