



Plot 9 Eastridge View
Minsterley, Shrewsbury, Shropshire

The Elbridge is an elegant brand-new detached family home boasting far reaching country views

Plot 9 Eastridge View forms part of a select development of 14 stunning homes nestled on the fringes of the popular Shropshire village of Minsterley. This fabulous property with attractive elevations offers both flexible and spacious living space throughout, while outside it enjoys a generous garden and detached garage



3 RECEPTION ROOMS



4 BEDROOMS



3 BATHROOMS



GARAGE & DRIVEWAY



GENEROUS GARDEN



FREEHOLD



COUNTRY VILLAGE



1,656 SQ FT



**GUIDE PRICE
£499,995**



The property

The property is a highly attractive home of around 1656 square feet, providing four fabulous bedrooms and a wealth of beautifully presented living space over two floors. The property features handsome elevations and stylish modern fittings including air source heating, underfloor heating to ground floor, solar panels, vehicle charging point and intruder alarm combined with understated natural décor to create a thoroughly pleasant and comfortable living space.

The welcoming entrance hall has Amtico flooring and cloakroom, an attractive staircase leads to the first-floor landing, doors lead to the wonderful kitchen/dining/family room, sitting room and study. The well-equipped kitchen has a range of wall and base units and silestone work surfaces incorporating a breakfast bar, integrated appliances include ceramic hob with extractor fan, electric double oven, microwave, dishwasher and upright fridge freezer - bifold doors open into the rear garden and patio which is ideal for alfresco dining. There is a separate utility room adjacent to the kitchen which has a door

to the garden. The airy double aspect sitting room has an attractive feature fireplace with log burner, slate hearth and oak mantle, double opening doors lead to the rear garden.

On the first floor the wonderful principal bedroom boasts a modern en-suite shower and a range of fitted wardrobes, it also enjoys far reaching country views. Bedroom two also benefits from a modern en-suite shower room and fitted wardrobes - bedroom three also has wonderful views to the rear. There is a modern three-piece family bathroom with tiled floor on the first floor.

Outside

The turfed rear garden has two paved patios with courtesy lighting; a pathway gives side access to the garage and driveway for two cars - the air source heat pump is in the rear garden. The garage has an electric door, power and light and eaves storage space, there is also an outside tap and vehicle charging point to the front of the property.



Location

Nestled in the heart of Shropshire's rolling hills, the village of Minsterley offers a rural lifestyle while being only about 10 miles from the historic county town of Shrewsbury, which has an abundance of excellent independent shops and cafes as well as supermarkets and leisure facilities. Minsterley itself offers a range of amenities including a public house, garage/convenience store, butchers, takeaways and primary school. The neighbouring village of Pontesbury offers a nursery, primary and secondary school, medical practice, dentists, a parade of small shops and a Co-Op. There is an abundance of fabulous walks on the doorstep as well as numerous sporting pursuits.

The A5 at Shrewsbury gives access to the nearby M54 link providing convenient access to the Midlands motorway network and regional hubs.

Distances

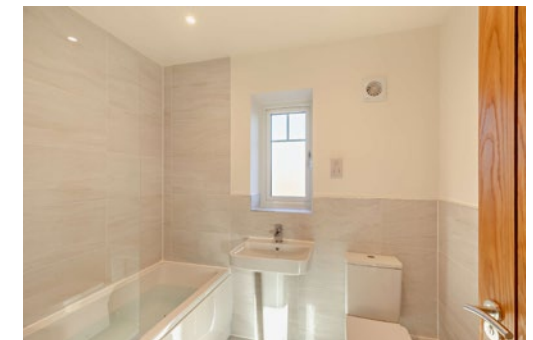
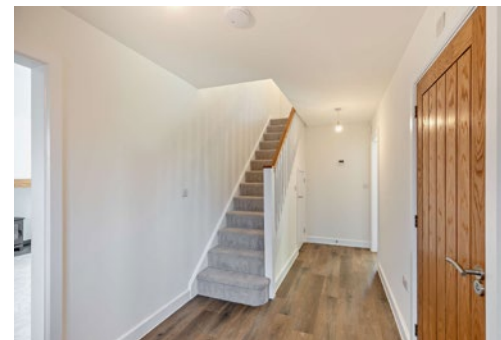
- Shrewsbury 10 miles
- Church Stretton 13 miles
- Oswestry 24 miles
- Ludlow 30 miles
- Birmingham 55 miles

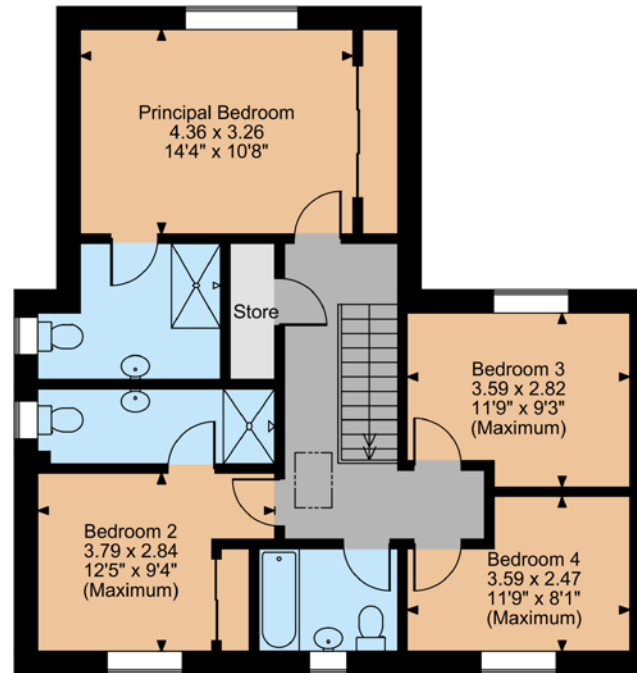
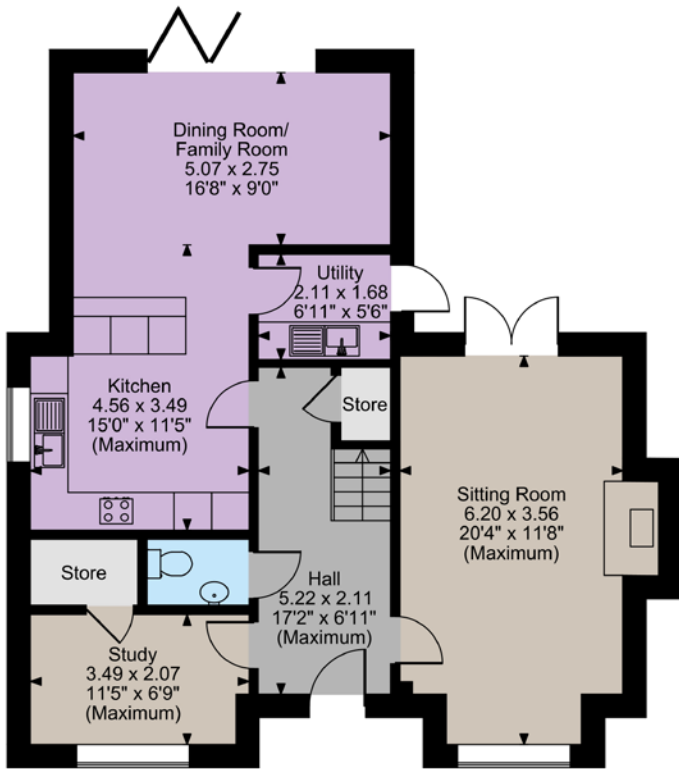
Nearby Stations

- Shrewsbury
- Church Stretton

Nearby Schools

- Prestfelde Preparatory
- Shrewsbury School
- Shrewsbury High School
- Mary Webb
- Concord College
- Minsterley Primary School
- Pontesbury C of E Primary School





First Floor

The position & size of doors, windows, appliances and other features are approximate only.
© ehouse. Unauthorised reproduction prohibited. Drawing ref. dig/8673684/SS

Floorplans

House internal area 1,656 sq ft (154 sq m)

For identification purposes only.

Directions

Post Code: SY5 0AD

what3words: ///panthers.volcano.stooping

General

Local Authority: Shropshire County Council

Services: Air source heating, mains water and electric and drainage.

Mobile and Broadband checker: Information can be found here <https://checker.ofcom.org.uk/en-gb/>

Council Tax: Unallocated

EPC Rating: B

Fixtures and Fittings: Only those items known as fixtures and fittings will be included in the sale. Certain items may be available by separate negotiation.

Wayleaves and easements: The property will be sold subject to and with the benefit of all wayleaves, easements and rights of way, whether mentioned in these particulars or not.

Warranty: NHBC - 10 years

Agents Note: There will be a management charge per dwelling of around £350 per annum to contribute to the communal areas/services - please consult with your solicitor for verification.

Photos and floorplans are of Plot 12 Eastridge View

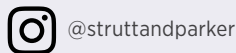
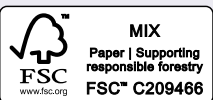
IMPORTANT NOTICE: Strutt & Parker gives notice that: 1. These particulars do not constitute an offer or contract or part thereof. 2. All descriptions, photographs and plans are for guidance only and should not be relied upon as statements or representations of fact. All measurements are approximate and not necessarily to scale. Any prospective purchaser must satisfy themselves of the correctness of the information within the particulars by inspection or otherwise. 3. Strutt & Parker does not have any authority to give any representations or warranties whatsoever in relation to this property (including but not limited to planning/building regulations), nor can it enter into any contract on behalf of the Vendor. 4. Strutt & Parker does not accept responsibility for any expenses incurred by prospective purchasers in inspecting properties which have been sold, let or withdrawn. 5. We are able to refer you to SPF Private Clients Limited ("SPF") for mortgage broking services, and to Alexander James Interiors ("AJI"), an interior design service. Should you decide to use the services of SPF, we will receive a referral fee from them of 25% of the aggregate of the fee paid to them by you for the arrangement of a mortgage and any fee received by them from the product provider. Should you decide to use the services of AJI, we will receive a referral fee of 10% of the net income received by AJI for the services they provide to you. 6. If there is anything of particular importance to you, please contact this office and Strutt & Parker will try to have the information checked for you. Photographs taken Dec 2025. Particulars prepared Dec 2025. Strutt & Parker is a trading style of BNP Paribas Real Estate Advisory & Property Management UK Limited

West Midlands New Homes

14 Shoplatch, Theatre Royal, Shrewsbury, SY1 1HR

01743 284200

westmidlandsnewhomes@struttandparker.com
struttandparker.com



Over 50 offices across England and Scotland,
including Prime Central London

For the finer things in property.

