

Albany

Mayfair, W1J



**STRUTT
& PARKER**

BNP PARIBAS GROUP

A masterpiece of discretion and distinction in the heart of Mayfair.

Tucked away in the heart of Mayfair, Albany has stood as a quiet emblem of prestige and refinement since 1802. Once the grand London home of the Duke of York, this distinguished Georgian landmark, designed by Henry Holland, was transformed into 69 bachelor apartments and swiftly became the address of choice for London's elite. Over the centuries, luminaries such as Lord Byron and Aldous Huxley have called Albany home, shaping its legacy as one of the city's most exclusive and storied residences.

This elegantly finished one-bedroom apartment offers a rare opportunity to experience life within this iconic enclave.

Upon entry, one is immediately struck by the refined reception room, filled with natural light streaming through two original floor-to-ceiling sash windows. Period features are beautifully preserved, from the original timber floors and intricate cornicing, to the striking hand-carved marble fireplace.

Adjoining the reception is a bright, sophisticated study which could also work as a second bedroom, complete with bespoke shelving, and a second marble fireplace.

A charming mezzanine level, ideal as a private library, tv snug, reading nook, or additional workspace - is tucked away up the original period staircase.





The kitchen and dining area impress with both form and function. Marble worktops, discreetly integrated Gaggenau appliances, and a generous breakfast bar with seating for eight create a space perfectly suited to both everyday living and elegant entertaining. There is ample room for a large dining table and a comfortable seating area, blending practicality with grandeur.

An original wooden staircase leads to a versatile upper-level media room, where exposed brick walls and a vaulted ceiling combine to create a space that is as atmospheric as it is unique.

The principal bedroom suite is a true sanctuary, generously proportioned and exquisitely detailed with hand-painted wallpaper. It features a striking freestanding copper bathtub, an original spiral staircase leading to a bespoke walk-in wardrobe, and a luxurious marble-clad shower room.

Adding to the apartment's allure is a private wine cellar on the lower ground floor, designed with a refined Art Deco aesthetic.

Residents of Albany enjoy 24-hour concierge service, access to tranquil private gardens, and the historic Rope Walk, making this an exceptional opportunity to own a home that balances heritage, discretion, and timeless luxury.

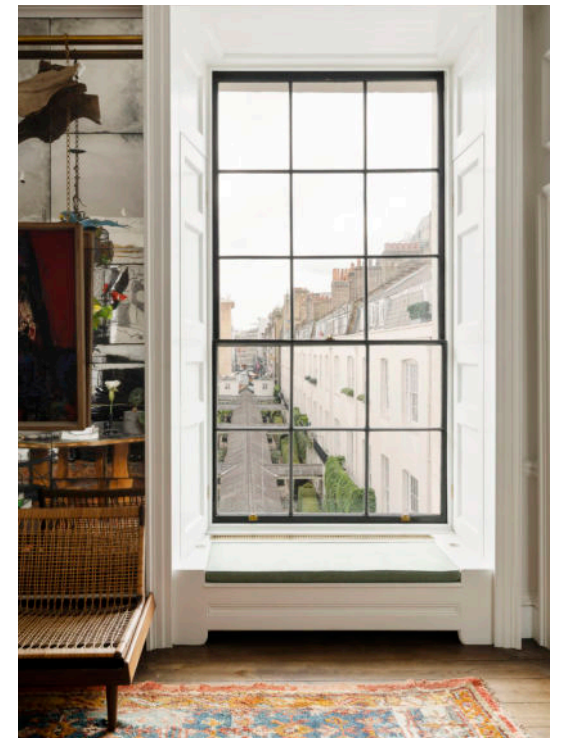








- 1 to 2 Bedrooms
- 3 to 4 Reception rooms
- 1 Bathroom
- Lift
- Concierge/ Porter
- Flat
- Upper floor
- Communal gardens







Located mere moments from the luxury boutiques of Bond Street and the verdant Green Park, residents enjoy unparalleled access to London's finest cultural and culinary offerings.



General

Tenure: Freehold

Guide Price: £9,995,000

Local Authority: City of Westminster

Service Charge: £29,000 per annum

Ground Rent: Peppercorn

Council Tax: Band H

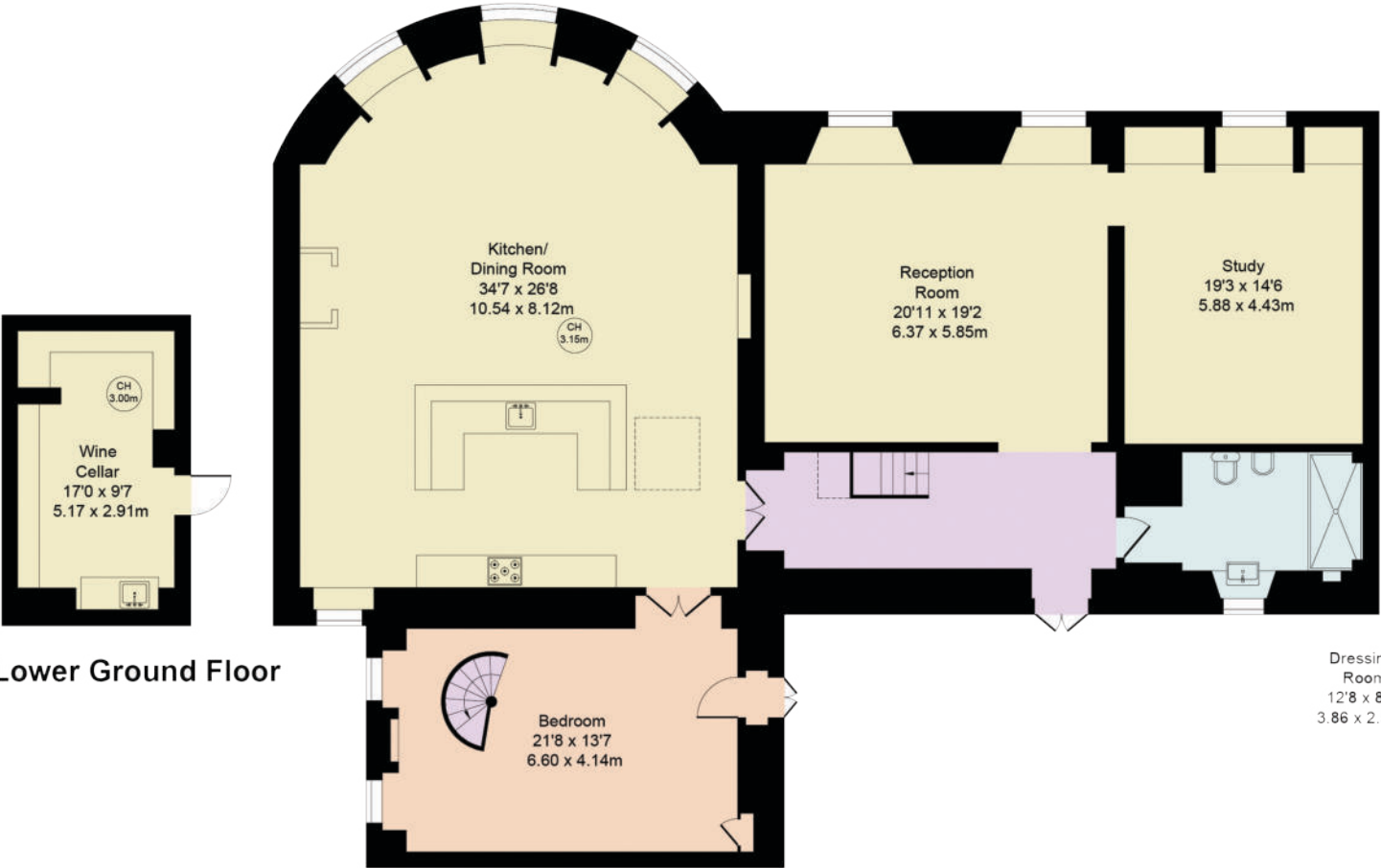
Broadband: Available

Parking: Resident's parking

Floorplans

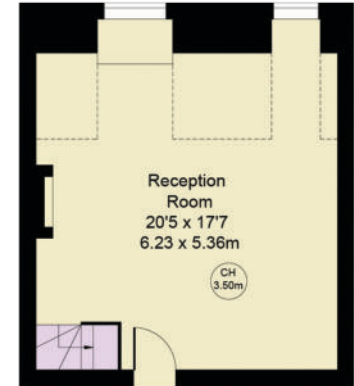
Gross internal area 2,842 sq ft (264 sq m)
For identification purposes only.

Key :
CH - Ceiling Height

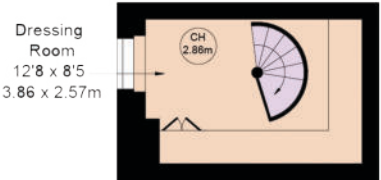


Lower Ground Floor

Second Floor



Third Floor



Third Floor

Mayfair

24 Savile Row, W1S 2ES

020 4525 3189

charles.medina@struttandparker.com
+44 (0)7468 357188

IMPORTANT NOTICE: Strutt & Parker gives notice that: 1. These particulars do not constitute an offer or contract or part thereof. 2. All descriptions, photographs and plans are for guidance only and should not be relied upon as statements or representations of fact. All measurements are approximate and not necessarily to scale. Any prospective purchaser must satisfy themselves of the correctness of the information within the particulars by inspection or otherwise. 3. Strutt & Parker does not have any authority to give any representations or warranties whatsoever in relation to this property (including but not limited to planning/building regulations), nor can it enter into any contract on behalf of the Vendor. 4. Strutt & Parker does not accept responsibility for any expenses incurred by prospective purchasers in inspecting properties which have been sold, let or withdrawn. 5. We are able to refer you to SPF Private Clients Limited ("SPF") for mortgage broking services, and to Alexander James Interiors ("AJI"), an interior design service. Should you decide to use the services of SPF, we will receive a referral fee from them of 25% of the aggregate of the fee paid to them by you for the arrangement of a mortgage and any fee received by them from the product provider. Should you decide to use the services of AJI, we will receive a referral fee of 10% of the net income received by AJI for the services they provide to you. 6. If there is anything of particular importance to you, please contact this office and Strutt & Parker will try to have the information checked for you. Photographs taken October 2025. Particulars prepared October 2025 Strutt & Parker is a trading style of BNP Paribas Real Estate Advisory & Property Management UK Limited

For the finer things in property.

