

Albert Hall Mansions, London



Strutt
& Parker

Land and property. Since 1885.

An exceptional apartment in the sought after Albert Hall Mansions, SW7

This beautifully refurbished apartment sits on the 2nd floor of a highly desirable red brick mansion block in the heart of Knightsbridge.

The flat extends to 1,552 sq ft, is served by a lift, concierge and is situated next to The Royal Albert Hall. An immaculately refurbished three-bedroom, two-bathroom flat situated in a beautiful red brick mansion block. The flat boasts wood flooring in principal areas and 24 hour porterage.



Location

Albert Hall Mansions is well situated for access to Hyde Park and is within striking distance of South Kensington and Kensington.

Postcode region: SW7

General

Local Authority: City of Westminster

Council Tax: Band H

EPC Rating: C

Service Charge: £22,000 per annum

Ground Rent: Peppercorn

Parking: Residents' permit

Mobile coverage and broadband: Information can be found here: <https://checker.ofcom.org.uk/en-gb/mobile-coverage>

1,561 sq ft (144.16 sq m)

1 reception room

3 bedrooms

2 bathrooms

Share of freehold

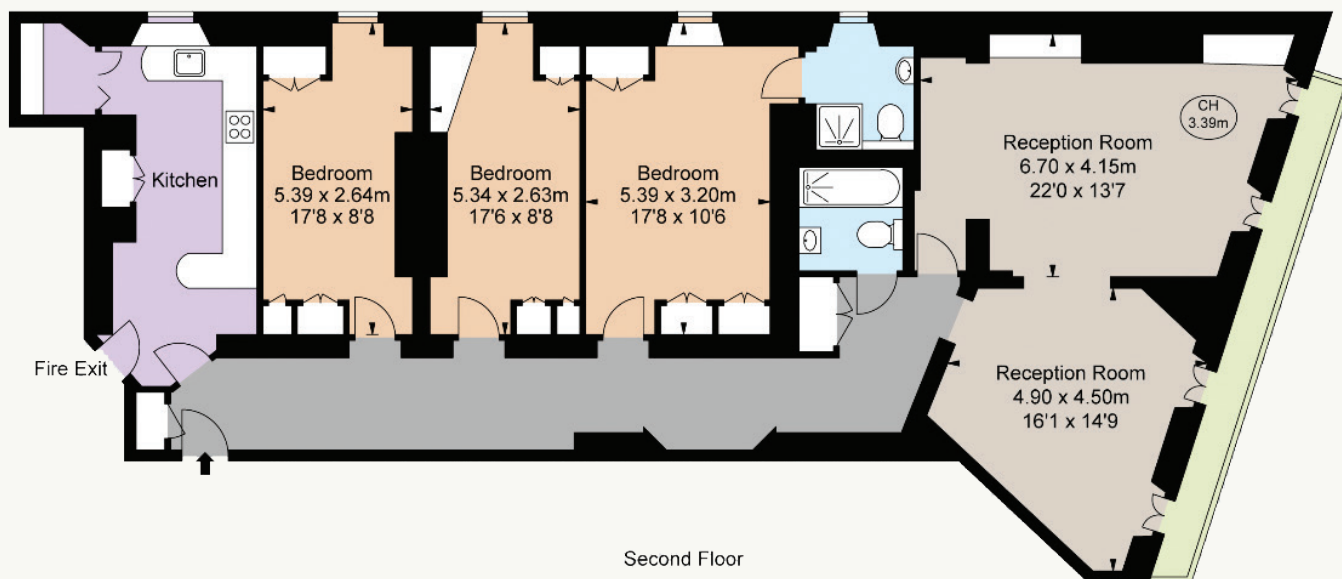
Guide price £3,000,000



ALBERT HALL MANSIONS, SW7
Gross internal area 1,552 sq ft (144.16 sq m)
CH = Ceiling Heights
For identification purposes only.



For illustrative purposes only – not to scale
The position and size of doors, windows, appliances
and other features are approximate only.



Strutt & Parker Knightsbridge & Belgravia

66 Sloane Street, London SW1X 9SH

020 7235 9959 | knightsbridge@struttandparker.com



@struttandparker

struttandparker.com

IMPORTANT NOTICE: Strutt & Parker gives notice that: 1. These particulars do not constitute an offer or contract or part thereof. 2. All descriptions, photographs and plans are for guidance only and should not be relied upon as statements or representations of fact. All measurements are approximate and not necessarily to scale. Any prospective purchaser must satisfy themselves of the correctness of the information within the particulars by inspection or otherwise. 3. Strutt & Parker does not have any authority to give any representations or warranties whatsoever in relation to this property (including but not limited to planning/building regulations), nor can it enter into any contract on behalf of the Vendor. 4. Strutt & Parker does not accept responsibility for any expenses incurred by prospective purchasers in inspecting properties which have been sold, let or withdrawn. 5. We are able to refer you to SPF Private Clients Limited ("SPF") for mortgage broking services, and to Alexander James Interiors ("AJI"), an interior design service. Should you decide to use the services of SPF, we will receive a referral fee from them of 25% of the aggregate of the fee paid to them by you for the arrangement of a mortgage and any fee received by them from the product provider. Should you decide to use the services of AJI, we will receive a referral fee of 10% of the net income received by AJI for the services they provide to you. 6. If there is anything of particular importance to you, please contact this office and Strutt & Parker will try to have the information checked for you. Strutt & Parker is a trading style of BNP Paribas Real Estate Advisory & Property Management UK Limited. Photographs taken May 2025. Particulars prepared April 2026.

Strutt & Parker

Land and property. Since 1885.