

Albyns Hall,
Stapleford Tawney, Essex



Strutt
& Parker

Land and property. Since 1885.



A ready to fit out luxury mansion with potential to develop into a magnificent house with extensive facilities and up to 10 bedrooms, set in a sought after rural position close to Chigwell

The property

Albyn's Hall is a grand, palatial country house, which has been reconstructed and offers the potential to fulfil the vision of creating a luxury home with stunning facilities. The property extends to 24,000 square feet across four levels, while outside there are extensive rolling grounds.

The construction of the structure and internal layout of the property is largely complete, but offers scope for a potential change of use, subject to the necessary consents. The accommodation includes the dramatic reception hall with its sweeping staircase and galleried landing above, which provides an impressive welcome upon arrival. The ground floor layout includes six reception rooms of various sizes, some intended for formal use, while others are ideal for relaxing as a family. There is also a large family kitchen and a secondary kitchen, ideal for use by staff.

Also on the ground floor is the swimming pool and spa complex, which will include an indoor pool, a sauna and a Hammam spa, a traditional Middle Eastern steam bath. The current plans show leisure facilities continuing on the lower ground floor, including a substantial gymnasium, massage and treatment rooms and a yoga room.

On the upstairs levels there is proposed to be a total of 10 bedrooms, including a nursery. The striking principal suite will include a generous bedroom, a sitting room, two large dressing rooms and a luxury en suite bathroom, while every other bedroom will be en suite. The first floor layout also accommodates a linen room and a prayer room, while on the second floor there will be a sitting room and a cinema room in addition to two bedrooms.

The extensive grounds include rolling meadows with mature trees, a pond and plenty of potential for landscaping. A secure yard at the side of the house is planned, with a large garaging complex.

**24,154 sq ft (2,244 sq m) | 7 Reception rooms | 10 Bedrooms | 12 Bathrooms
Garage | 3.69 acres | Freehold | Rural**

Offers in excess of £9,000,000

Location

The highly regarded village of Stapleford Tawney is set amidst attractive Essex countryside, offering a peaceful rural setting while remaining within easy reach of London. Local amenities can be found in nearby Abridge and Theydon Bois, including village shops, cafés and public houses, while more extensive facilities are available in Epping, Loughton and Romford, all providing a wide range of shopping, leisure and dining options. For the equestrian enthusiast there are local stables nearby.

The area is well regarded for schooling, with a selection of highly rated state and independent schools within reach, including Chigwell School, Bancroft's School, Brentwood School and Forest School, as well as a number of respected primary schools in the surrounding villages.

Transport links are convenient, with Theydon Bois and Epping Underground stations (Central Line) providing direct services into the City and West End. Road connections are also excellent, with the M25 (Junction 26) and M11 easily accessible, offering links to central London, Stansted Airport and the wider motorway network.

Postcode region: RM4

General

Local Authority: Epping Forest District Council

Services: TBC

Council Tax: TBC

EPC Rating: N/A

Tenure: Freehold

Mobile and Broadband checker: Information can be found here <https://checker.ofcom.org.uk/en-gb/>





CGI



CGI



CGI



CGI



CGI



CGI

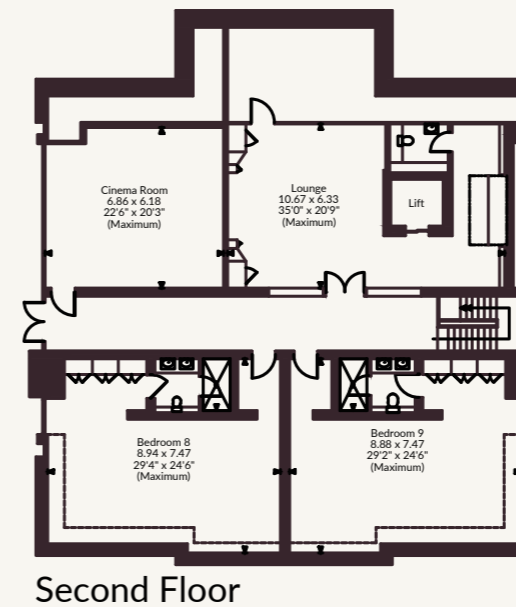
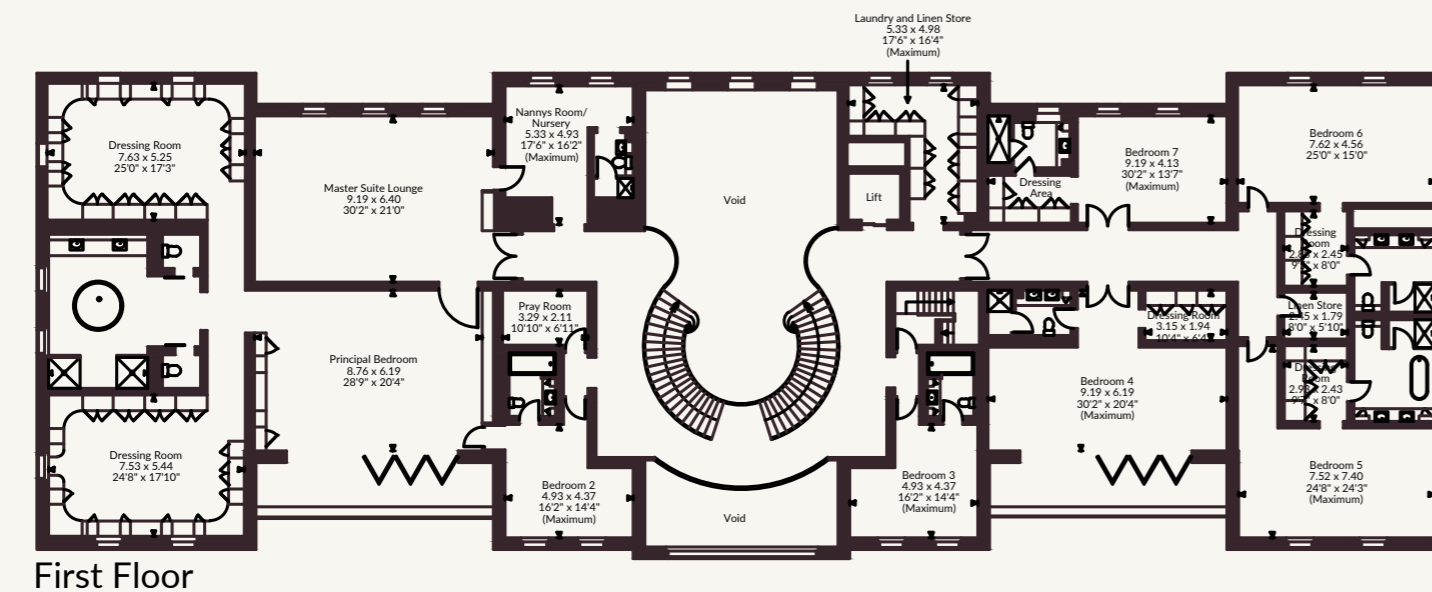
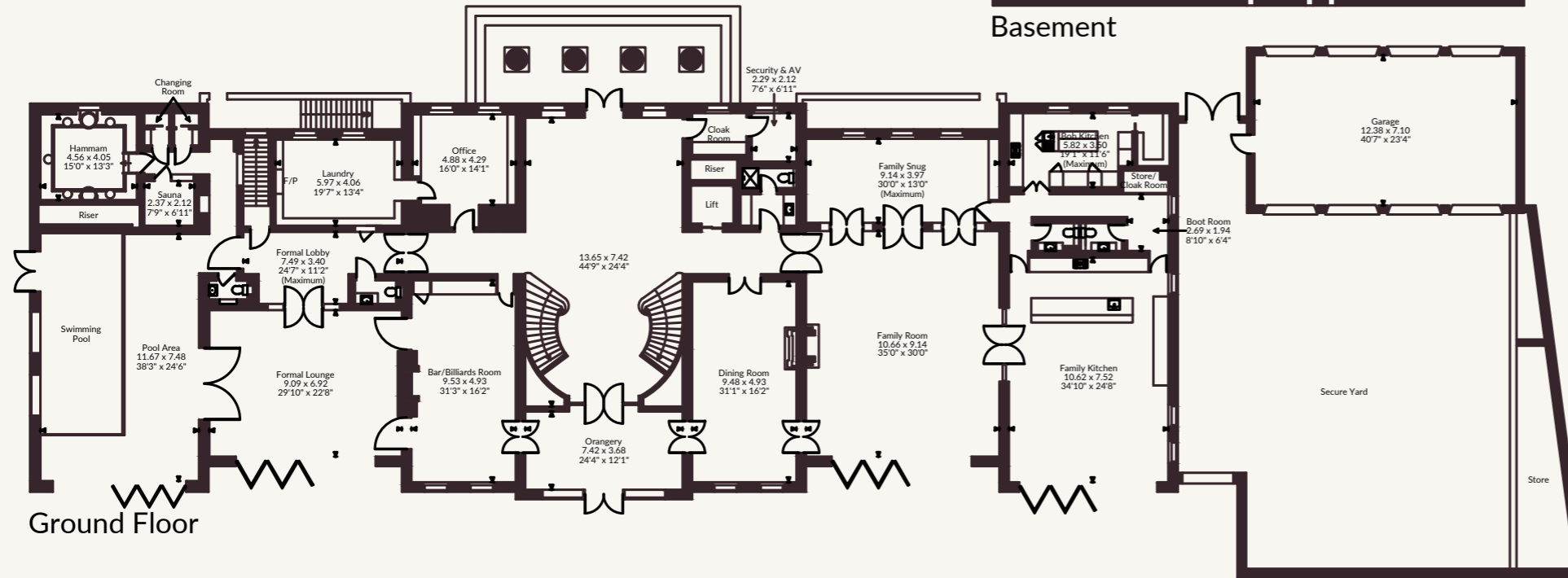
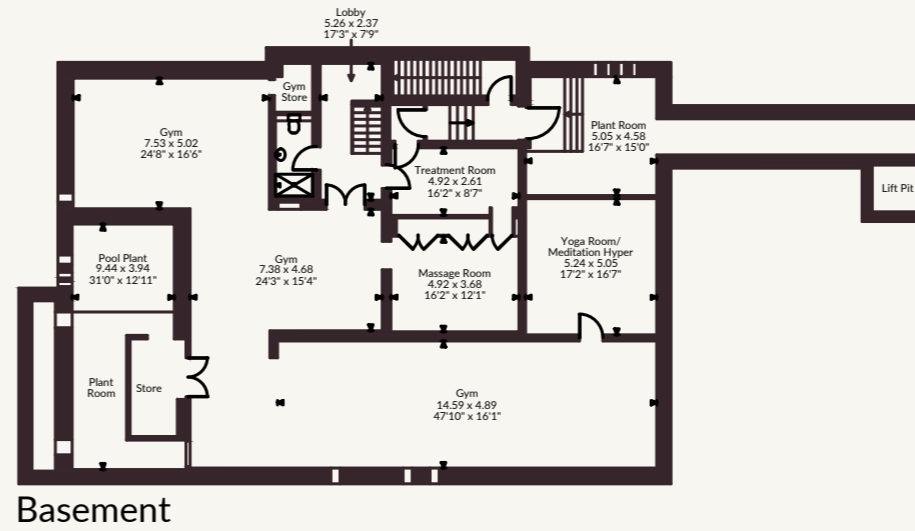


CGI



CGI

Albys Hall, Albys Lane, Stapleford Tawney
 Main House internal area 24,154 sq ft (2,244 sq m)
 Garage internal area 946 sq ft (88 sq m)
 Total internal area 25,100 sq ft (2,332 sq m)



National Country House Department
 43 Cadogan St, London SW3 2PR
 020 7591 2213 | london@struttandparker.com

@struttandparker struttandparker.com

IMPORTANT NOTICE: Strutt & Parker gives notice that: 1. These particulars do not constitute an offer or contract or part thereof. 2. All descriptions, photographs and plans are for guidance only and should not be relied upon as statements or representations of fact. All measurements are approximate and not necessarily to scale. Any prospective purchaser must satisfy themselves of the correctness of the information within the particulars by inspection or otherwise. 3. Strutt & Parker does not have any authority to give any representations or warranties whatsoever in relation to this property (including but not limited to planning/building regulations), nor can it enter into any contract on behalf of the Vendor. 4. Strutt & Parker does not accept responsibility for any expenses incurred by prospective purchasers in inspecting properties which have been sold, let or withdrawn. 5. We are able to refer you to SPF Private Clients Limited ("SPF") for mortgage broking services, and to Alexander James Interiors ("AJI"), an interior design service. Should you decide to use the services of SPF, we will receive a referral fee from them of 25% of the aggregate of the fee paid to them by you for the arrangement of a mortgage and any fee received by them from the product provider. Should you decide to use the services of AJI, we will receive a referral fee of 10% of the net income received by AJI for the services they provide to you. 6. If there is anything of particular importance to you, please contact this office and Strutt & Parker will try to have the information checked for you. Strutt & Parker is a trading style of BNP Paribas Real Estate Advisory & Property Management UK Limited. Photographs taken April 2026. Particulars prepared April 2026.

FOR ILLUSTRATIVE PURPOSES ONLY - NOT TO SCALE
 The position & size of doors, windows, appliances and other features are approximate only.
 ☐☐☐☐ Denotes restricted head height
 © ehouse. Unauthorised reproduction prohibited. Drawing ref. dig/8688712/SS



Strutt
& Parker

Land and property. Since 1885.