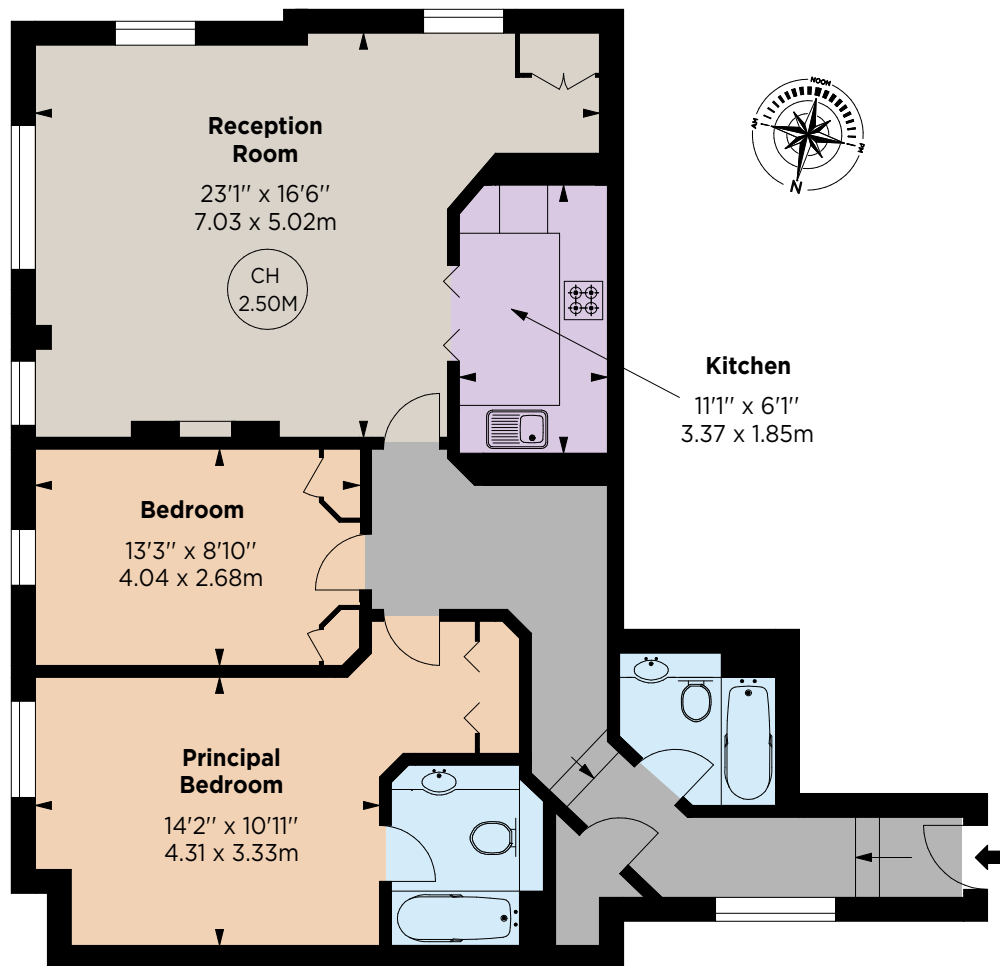


Davis Court

Kensington, W8





THIRD FLOOR



A spacious two bedroom, two bathroom, 3rd floor apartment (with lift) in this central location in Kensington. Approx. 959 sq ft.

The property is situated in this well-maintained building at the southern end of Argyll Road.

There is a bright and light reception room/dining room leading to a fitted kitchen. Additionally, the accommodation comprises two double bedrooms and two bathrooms.

Davis Court is in an extremely convenient location, just moments from all the shops, restaurants and transport amenities along Kensington High Street. The beautiful open spaces of Holland Park and Hyde Park are a short distance away.

Floorplans

Gross internal area 959 sq ft (89.09 sq m)
For identification purposes only.

General

Tenure: Leasehold, 120 years and 10 months remaining

Local Authority: The Royal Borough of Kensington and Chelsea

Service Charge: £6,130.78 from 01/01/2024 – 31/12/2024

Ground Rent: £100 per year

Council Tax: Band G

EPC Rating: D

Parking: Residents parking

Broadband: Available

Asking Price: £1,025,000

Kensington

103 Kensington Church Street, London W8 7LN

020 7938 3666

kensington@struttandparker.com
struttandparker.com

IMPORTANT NOTICE: Strutt & Parker gives notice that: 1. These particulars do not constitute an offer or contract or part thereof. 2. All descriptions, photographs and plans are for guidance only and should not be relied upon as statements or representations of fact. All measurements are approximate and not necessarily to scale. Any prospective purchaser must satisfy themselves of the correctness of the information within the particulars by inspection or otherwise. 3. Strutt & Parker does not have any authority to give any representations or warranties whatsoever in relation to this property (including but not limited to planning/building regulations), nor can it enter into any contract on behalf of the Vendor. 4. Strutt & Parker does not accept responsibility for any expenses incurred by prospective purchasers in inspecting properties which have been sold, let or withdrawn. 5. We are able to refer you to SPF Private Clients Limited ("SPF") for mortgage broking services, and to Alexander James Interiors ("AJI"), an interior design service. Should you decide to use the services of SPF, we will receive a referral fee from them of 25% of the aggregate of the fee paid to them by you for the arrangement of a mortgage and any fee received by them from the product provider. Should you decide to use the services of AJI, we will receive a referral fee of 10% of the net income received by AJI for the services they provide to you. 6. If there is anything of particular importance to you, please contact this office and Strutt & Parker will try to have the information checked for you. Photographs taken March 2025. Particulars prepared March 2025. Strutt & Parker is a trading style of BNP Paribas Real Estate Advisory & Property Management UK Limited



@struttandparker

Over 50 offices across England and Scotland,
including Prime Central London

For the finer things in property.

