



Arundel Gardens, Notting Hill, W11

For the finer things in property.

**STRUTT
& PARKER**

BNP PARIBAS GROUP

Arundel Gardens, Notting Hill, W11

A beautifully presented two bedroom flat benefiting from exceptionally high ceilings and communal garden access.

A bright and spacious two bedroom flat with high ceilings (3.51m), presented in excellent condition and positioned on the raised ground floor within a well renowned purpose built block on Arundel Gardens. The double aspect kitchen/reception room enjoys wonderful natural light and views over the communal garden. Both bedrooms benefit from built in wardrobes and the bathroom has been newly refurbished.

Arundel Court occupies a prominent position on Arundel Gardens in the heart of Notting Hill. The fantastic amenities of Westbourne Grove and Portobello Road are both within easy reach, as is Notting Hill and Ladbroke Grove tube stations.

Open plan reception/kitchen | Two bedrooms
Bathroom | Communal garden access
EPC Rating C

Terms

Tenure: Leasehold of 999 year from 07/07/2003

Service Charge: £5,480pa (Includes heating and hot water)

Ground Rent: £82.50pa

Council Tax: Band F

Local Authority: The Royal Borough of Kensington and Chelsea

Asking Price: £1,000,000

Notting Hill

303 Westbourne Grove, London, W11 2QA

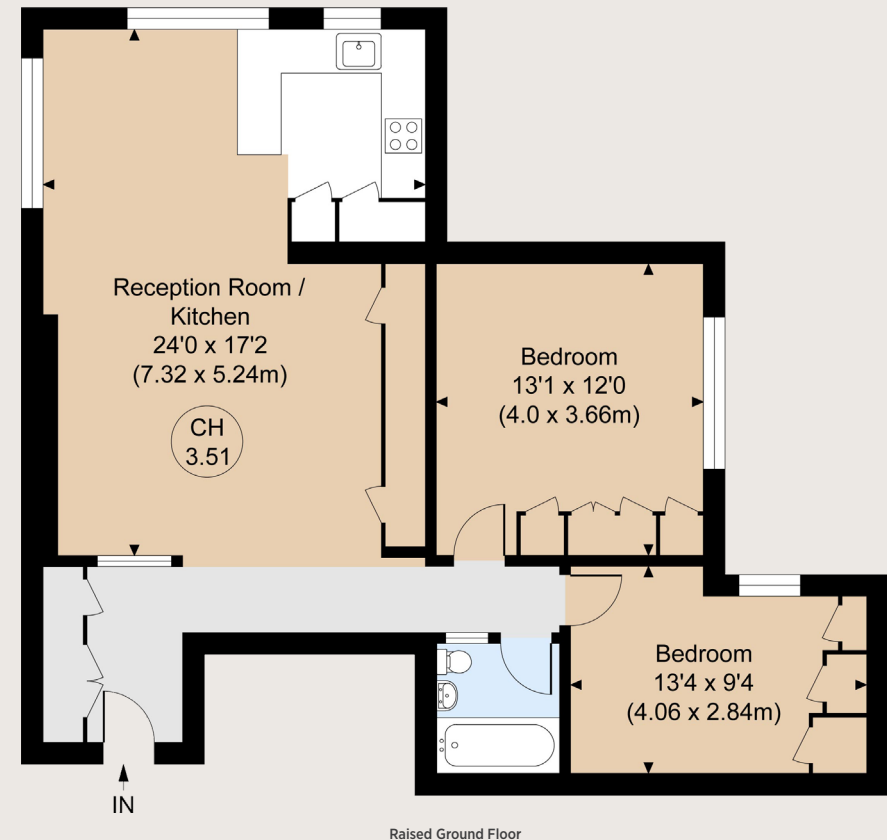
020 7221 1111

nottinghill@struttandparker.com

struttandparker.com



Gross Internal Area 841 sq ft (78.10 sq m) excluding storage
For identification purposes only.



IMPORTANT NOTICE

Strutt & Parker gives notice that: 1. These particulars do not constitute an offer or contract or part thereof. 2. All descriptions, photographs and plans are for guidance only and should not be relied upon as statements or representations of fact. All measurements are approximate and not necessarily to scale. Any prospective purchaser must satisfy themselves of the correctness of the information within the particulars by inspection or otherwise. 3. Strutt & Parker does not have any authority to give any representations or warranties whatsoever in relation to this property (including but not limited to planning/building regulations), nor can it enter into any contract on behalf of the Vendor. 4. Strutt & Parker does not accept responsibility for any expenses incurred by prospective purchasers in inspecting properties which have been sold, let or withdrawn. 5. We are able to refer you to SPF Private Clients Limited ("SPF") for mortgage broking services, and to Alexander James Interiors ("AJI"), an interior design service. Should you decide to use the services of SPF, we will receive a referral fee from them of 25% of the aggregate of the fee paid to them by you for the arrangement of a mortgage and any fee received by them from the product provider. Should you decide to use the services of AJI, we will receive a referral fee of 10% of the net income received by AJI for the services they provide to you. 6. If there is anything of particular importance to you, please contact this office and Strutt & Parker will try to have the information checked for you. Photographs taken June 2024. Particulars prepared June 2024. Strutt & Parker is a trading style of BNP Paribas Real Estate Advisory & Property Management UK Limited.



Over 50 offices across England and Scotland,
including Prime Central London

For the finer things in property.

**STRUTT
& PARKER**

BNP PARIBAS GROUP