

Arundel Gardens,
Notting Hill



Strutt
& Parker

Land and property. Since 1885.

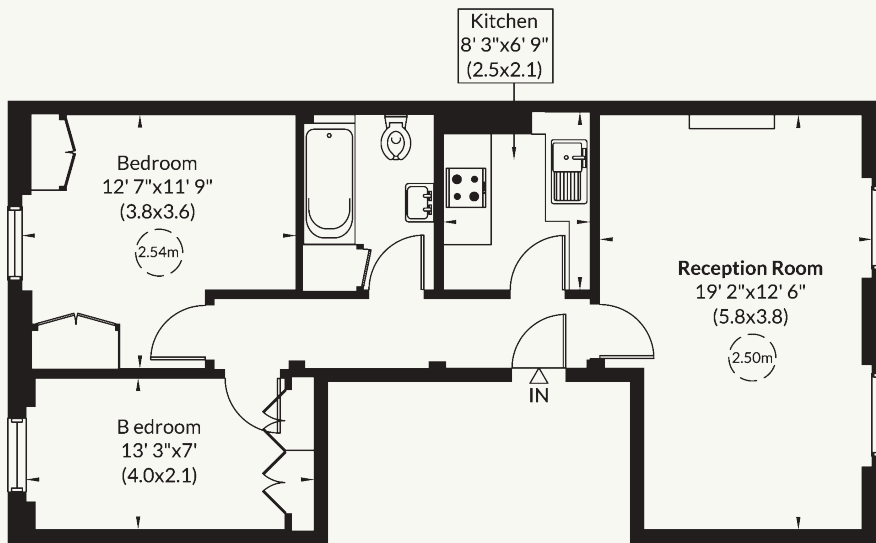


630 sq ft (58 sq m)
Two bedrooms
Communal garden access
Share of Freehold

Guide price £825,000

Approximate Gross Internal Area
58 sq m/ 630 sq ft

Not to Scale, for identification only



Third Floor

A well-presented two-bedroom flat with access to communal gardens

This bright flat occupies the third floor of this handsome period building and benefits from spectacular views over the communal gardens. It also offers an excellent layout and good entertaining space and is flooded with natural light, with the benefit of having access to beautiful communal gardens.

Arundel Gardens is situated in an excellent, central Notting Hill location in the conservation area of the Ladbroke Estate. It is close to the fashionable addresses of Westbourne Grove, Ledbury Road and Portobello Road and therefore benefits from all the shopping and transport facilities of the local area. The green spaces of Kensington Gardens and Holland Park are also nearby.

General

Tenure: Share of Freehold. 998 years remaining
 Local Authority: Royal Borough of Kensington and Chelsea
 Service Charge: £525 per annum
 Ground Rent: None
 Council Tax: Band F
 EPC Rating: C
 Parking: Residents Parking
 Mobile and Broadband checker:
 Information can be found here <https://checker.ofcom.org.uk/en-gb/>



Strutt & Parker Notting Hill

303 Westbourne Grove, London, W11 2QA

020 7221 1111 | nottinghill@struttandparker.com



@struttandparker

struttandparker.com

IMPORTANT NOTICE: Strutt & Parker gives notice that: 1. These particulars do not constitute an offer or contract or part thereof. 2. All descriptions, photographs and plans are for guidance only and should not be relied upon as statements or representations of fact. All measurements are approximate and not necessarily to scale. Any prospective purchaser must satisfy themselves of the correctness of the information within the particulars by inspection or otherwise. 3. Strutt & Parker does not have any authority to give any representations or warranties whatsoever in relation to this property (including but not limited to planning/building regulations), nor can it enter into any contract on behalf of the Vendor. 4. Strutt & Parker does not accept responsibility for any expenses incurred by prospective purchasers in inspecting properties which have been sold, let or withdrawn. 5. We are able to refer you to SPF Private Clients Limited ("SPF") for mortgage broking services, and to Alexander James Interiors ("AJI"), an interior design service. Should you decide to use the services of SPF, we will receive a referral fee from them of 25% of the aggregate of the fee paid to them by you for the arrangement of a mortgage and any fee received by them from the product provider. Should you decide to use the services of AJI, we will receive a referral fee of 10% of the net income received by AJI for the services they provide to you. 6. If there is anything of particular importance to you, please contact this office and Strutt & Parker will try to have the information checked for you. Strutt & Parker is a trading style of BNP Paribas Real Estate Advisory & Property Management UK Limited. Photographs taken May 2026. Particulars prepared May 2026.

Strutt & Parker