



Ash Hill House, Ash Hill, Ruckinge, Kent

For the finer things in property.

**STRUTT
& PARKER**

BNP PARIBAS GROUP

Ash Hill House

Ash Hill, Ruckinge, Ashford, Kent TN26 2PE

A beautifully designed and orientated family home with four bedrooms and four bathrooms, two studies, 2.3 acres, a paddock and a tennis court, and within easy reach of both the seashore and the high-speed HS1 train.

The house is spacious, yet compact, with a wonderful feel. It combines interior design with every day practicality, and gets sun throughout the day. It has been developed under one long ownership; this is the first time that the property has come to the market.

Principal features at a glance:

- * Four double bedrooms, four bathrooms, three en suite
- * The principal bedroom has doors onto a balcony overlooking the garden
- * A sitting room, a snug, a dining room, a study/library and a study/office
- * Open fires in the sitting room and snug, a log-burner in the dining room
- * The kitchen has an AGA, two Neff ovens, an induction hob and a wine cooler
- * There are two fridges, two freezers and two dishwashers
- * A large 'breakfast' area in the kitchen
- * A utility room, a walk-in larder and a cloakroom

- * The AGA and central heating are oil-fired
- * Fibre optic broadband

Double doors open from the kitchen and the study/library onto the patio and from the dining room and the sitting room onto the terrace

- * A semi-circular gravel drive, a 3-bay garage, log store and storage mezzanine
- * A patio outside the kitchen for dining, getting the morning sun
- * A terrace outside the sitting room for the afternoon and evening sun
- * A hard tennis court and a practice board
- * An orchard area with apples, plums and crab apple trees
- * A natural pond with a bridge and an ornamental pond with a fountain
- * A paddock of about 0.75 of an acre
- * Garden sheds
- * A farm track from the road for vehicle access to the garden and paddock

Ashford International station (London from 36 minutes) is a short (6.8 miles) drive away, as are the beaches between Folkestone and Rye (about 9 miles).















Location

Ash Hill House sits over the footprint of an old stable, to which one low doorway in the middle of the house bears witness. Over the years the house and the garden have developed to keep abreast of family needs for living, entertaining and outdoor activities.

On the edge of Ruckinge village, the house is on the top of an escarpment but just below its brow, protected by high trees. The nearby footpath is the Saxon Shore Way, and the village can be traced back to Domesday Book times. On the other sides of the house, the views are over fields, towards majestic woods.

The house has provided an ideal base for family life and for home working from its two studies. One of its most significant attributes remains its orientation, which gives sun from morning to night over the two terraces – the last rays of the day being caught on the sitting room terrace.

Although in a rural setting its location gives easy access for commuting, shopping, recreation and travel, including to the Continent:

Canterbury, about 21 miles distant, has the Cathedral, superb schooling and the excellent Marlowe Theatre, which presents London shows. Closer than that are:

Rye, which has a strong artistic and cultural reputation and is home to the distinguished Rye Golf Club and to the Rye Tennis Club

Folkestone, which provides access to the Channel Tunnel and harbour restaurants

Ashford, home of a Designer Outlet, multiple supermarkets and good private, state and Grammar Schools

Tenterden, an elegant market town

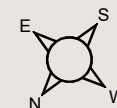
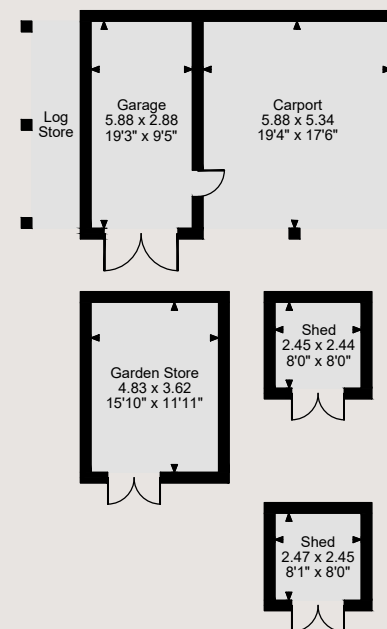
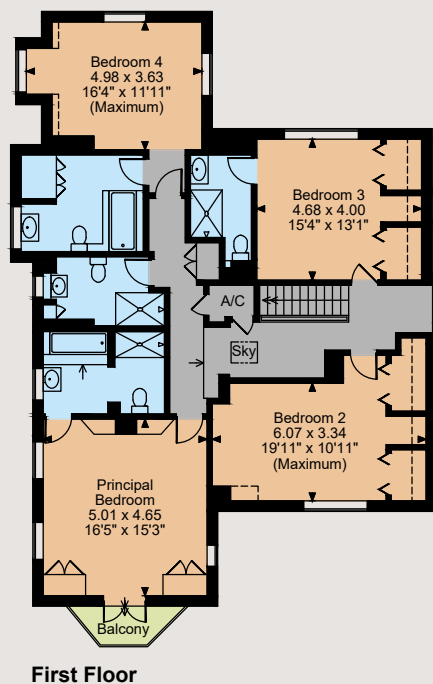
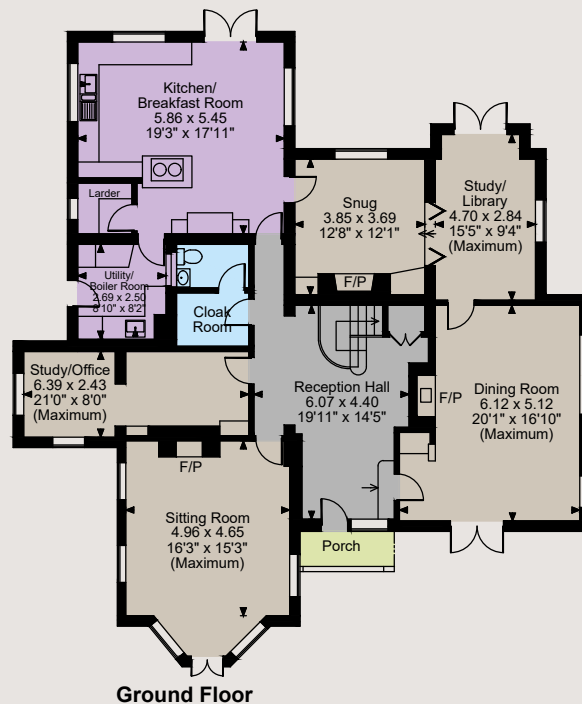
The long sandy beaches of Kent and East Sussex, including Camber

The London to Dover M20 is about 6 miles away

Hamstreet, which is less than 2 miles away, has a Morrisons and a good surgery. Its station connects to **Ashford International Station** in about 8 minutes, where the HS1 train takes from 36 minutes to London St Pancras International.



Ash Hill House Ruckinge, Ashford
Main House internal area 3,356 sq ft (312 sq m)
Garage & Carport internal area 539 sq ft (50 sq m)
Garden Store & Sheds internal area 317 sq ft (30 sq m)
Balcony external area = 28 sq ft (3 sq m)
Quoted Area Excludes 'Log Store'
For identification purposes only.



The position & size of doors, windows, appliances and other features are approximate only.

□ □ □ Denotes restricted head height

© ehous. Unauthorised reproduction prohibited. Drawing ref. dig/8518473/DWL

Directions

From Hamstreet: Head east on Ruckinge Road (A2067) for about 2 miles to Ruckinge. Take the first left turn in Ruckinge, up Ash Hill, to the top of the hill, and Ash Hill House is the last house on the right, passing Spindleberry House on the left and then The Old Rectory on the right.

General

Local Authority: Ashford Borough Council

Services: Mains electricity and water, septic tank drainage; oil-fired heating and AGA.

Council Tax: Band G

Tenure: Freehold

EPC Rating: E

Guide Price: £1,250,000

Canterbury

2 St Margaret's Street, Canterbury, Kent CT1 2SL

01227 473700

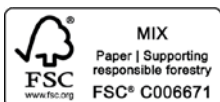
canterbury@struttandparker.com
struttandparker.com

@struttandparker

/struttandparker

Over 45 offices across England and Scotland,
including Prime Central London

IMPORTANT NOTICE: Strutt & Parker gives notice that: 1. These particulars do not constitute an offer or contract or part thereof. 2. All descriptions, photographs and plans are for guidance only and should not be relied upon as statements or representations of fact. All measurements are approximate and not necessarily to scale. Any prospective purchaser must satisfy themselves of the correctness of the information within the particulars by inspection or otherwise. 3. Strutt & Parker does not have any authority to give any representations or warranties whatsoever in relation to this property (including but not limited to planning/building regulations), nor can it enter into any contract on behalf of the Vendor. 4. Strutt & Parker does not accept responsibility for any expenses incurred by prospective purchasers in inspecting properties which have been sold, let or withdrawn. 5. We are able to refer you to SPF Private Clients Limited ("SPF") for mortgage broking services, and to Alexander James Interiors ("AJI"), an interior design service. Should you decide to use the services of SPF, we will receive a referral fee from them of 25% of the aggregate of the fee paid to them by you for the arrangement of a mortgage and any fee received by them from the product provider. Should you decide to use the services of AJI, we will receive a referral fee of 10% of the net income received by AJI for the services they provide to you. 6. If there is anything of particular importance to you, please contact this office and Strutt & Parker will try to have the information checked for you. Photographs taken September 2022 and August 2023. Particulars prepared November 2023. Strutt & Parker is a trading style of BNP Paribas Real Estate Advisory & Property Management UK Limited



For the finer things in property.

