

Atherstone Mews

London, SW7



Pretty maisonette apartment set on the first and second floor of this impressive mews house.

Benefiting from a bright and spacious terrace.



1 RECEPTION ROOM



3 BEDROOMS



1 BATHROOM



LEASEHOLD



1,095 SQ FT



**GUIDE PRICE
£1,625,000**

The property

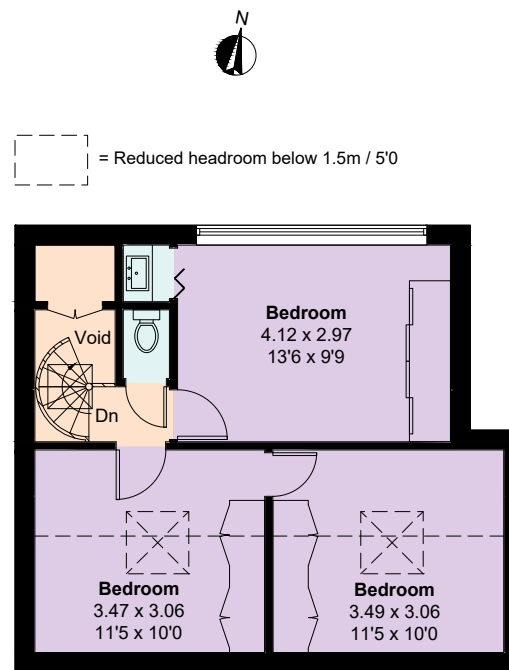
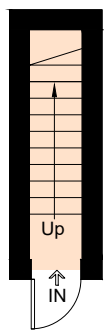
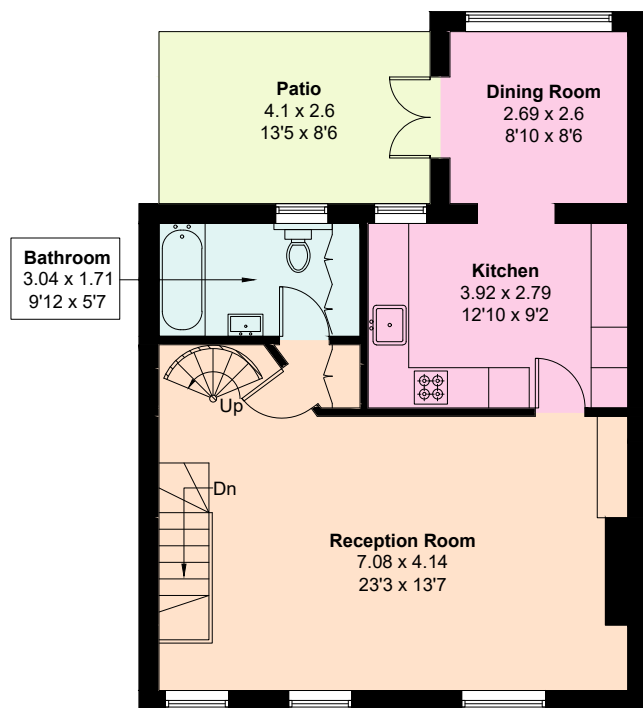
The 1st floor has a large reception room with a central period fireplace and ample entertaining space. The well-appointed kitchen flows through to the dining room that feeds onto the terrace. A bathroom is situated on this floor. A spiral staircase leads up to the three bedrooms with luminous light from well positioned windows and sky lights. This floor also has a powder room. The property benefits from having access to the beautiful private communal gardens of Queen's Gate Gardens (by application).

Location

Atherstone Mews is a stunning cobbled mews street that adorns Queen's Gate Gardens. Nearby to the world-renowned Victoria and Albert Museum, cafes, restaurants, amenities, and Hyde Park. Close transport links include South Kensington and Gloucester Road underground stations that are services by the district, circle and piccadilly lines.







Floorplans

Gross internal area 960 sq ft (89.2 sq m)
Restricted head height 135 sq ft (12.5 sq m)
Total 1,095 sq ft (101.7 sq m)
 For identification purposes only.

General

Tenure: Share of Freehold approximately 952 years
Local Authority: The Royal Borough of Kensington and Chelsea
Service Charge: £2,176 per annum
Ground Rent: Peppercorn
Council Tax: Band G
EPC Rating: C
Parking: The Royal Borough of Kensington and Chelsea parking permit
Broadband: Installed

IMPORTANT NOTICE: Strutt & Parker gives notice that: 1. These particulars do not constitute an offer or contract or part thereof. 2. All descriptions, photographs and plans are for guidance only and should not be relied upon as statements or representations of fact. All measurements are approximate and not necessarily to scale. Any prospective purchaser must satisfy themselves of the correctness of the information within the particulars by inspection or otherwise. 3. Strutt & Parker does not have any authority to give any representations or warranties whatsoever in relation to this property (including but not limited to planning/building regulations), nor can it enter into any contract on behalf of the Vendor. 4. Strutt & Parker does not accept responsibility for any expenses incurred by prospective purchasers in inspecting properties which have been sold, let or withdrawn. 5. We are able to refer you to SPF Private Clients Limited ("SPF") for mortgage broking services, and to Alexander James Interiors ("AJI"), an interior design service. Should you decide to use the services of SPF, we will receive a referral fee from them of 25% of the aggregate of the fee paid to them by you for the arrangement of a mortgage and any fee received by them from the product provider. Should you decide to use the services of AJI, we will receive a referral fee of 10% of the net income received by AJI for the services they provide to you. 6. If there is anything of particular importance to you, please contact this office and Strutt & Parker will try to have the information checked for you. Photographs taken November 2024. Particulars prepared November 2025. Strutt & Parker is a trading style of BNP Paribas Real Estate Advisory & Property Management UK Limited

South Kensington

90 Old Brompton Road, London, SW7 3LQ

020 7581 7000

southken@struttandparker.com
struttandparker.com



@struttandparker

Over 50 offices across England and Scotland,
 including Prime Central London

For the finer things in property.

**STRUTT
& PARKER**

BNP PARIBAS GROUP