

21B Bardwell Road,
Oxford



Strutt
& Parker

Land and property. Since 1885.



1,300 sq ft (120.8 sq m)
 1 reception room | 3 bedrooms
 Shared rear garden
 Quiet side road location

£3,500 pcm*

Approximate Floor Area = 120.8 sq m / 1300 sq ft



**Beautifully presented,
 first floor apartment
 close to one of the most
 popular Private Schools
 in Oxford**

This beautifully presented apartment, has just been redecorated throughout and is located within striking distance to The Dragon School (across the road).

The modern kitchen is light and offers plenty of storage. There is also a large living room with three bedrooms, one with a W/C and a main family bathroom.

Outside there is a private rear garden that is shared between the apartments along with a shed for storage. Communal bike racks.

General

Local Authority: Oxford City Council
 Services: Mains drainage & water. Gas central heating. On street permit parking (subject to council acceptance).

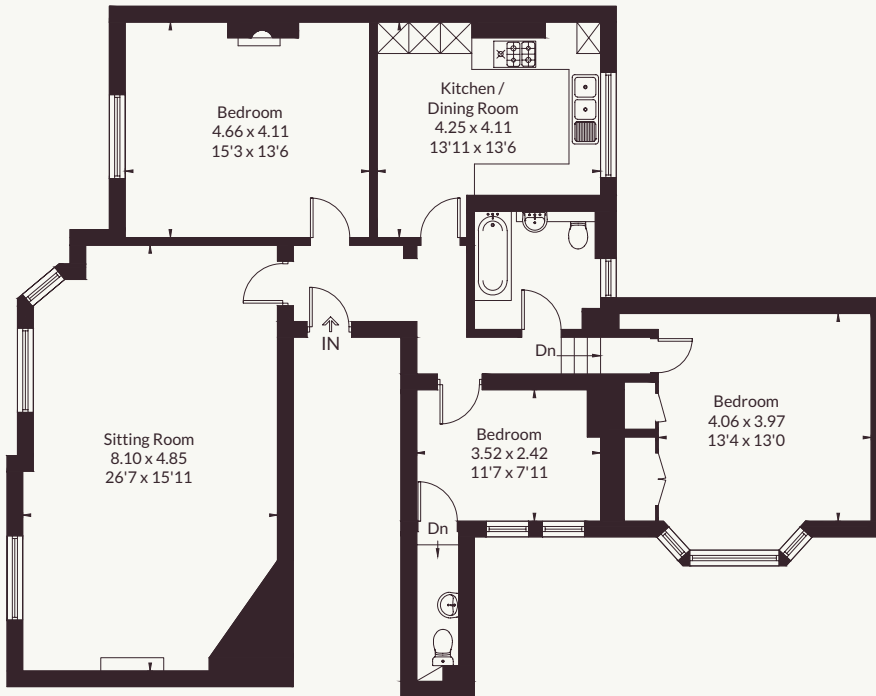
Council Tax: Band F

EPC Rating: C

Mobile and Broadband checker:

Information can be found here <https://checker.ofcom.org.uk/en-gb/>

* Tenant Charges may apply please visit struttandparker.com/tenantcharges for more information



First Floor

This floor plan has been drawn in accordance with RICS Property Measurement 2nd edition. All measurements, including the floor area, are approximate and for illustrative purposes only. @fourwalls-group.com #107590



Strutt & Parker Oxford Lettings

201-203 Banbury Road, Summertown, Oxford, OX2 7LL

01865 366600 | oxfordlettings@struttandparker.com



@struttandparker

struttandparker.com

IMPORTANT NOTICE: Strutt & Parker gives notice that: 1. These particulars do not constitute an offer or contract or part thereof. 2. All descriptions, photographs and plans are for guidance only and should not be relied upon as statements or representations of fact. All measurements are approximate and not necessarily to scale. Any prospective purchaser must satisfy themselves of the correctness of the information within the particulars by inspection or otherwise. 3. Strutt & Parker does not have any authority to give any representations or warranties whatsoever in relation to this property (including but not limited to planning/building regulations), nor can it enter into any contract on behalf of the Vendor. 4. Strutt & Parker does not accept responsibility for any expenses incurred by prospective purchasers in inspecting properties which have been sold, let or withdrawn. 5. We are able to refer you to SPF Private Clients Limited ("SPF") for mortgage broking services, and to Alexander James Interiors ("AJI"), an interior design service. Should you decide to use the services of SPF, we will receive a referral fee from them of 25% of the aggregate of the fee paid to them by you for the arrangement of a mortgage and any fee received by them from the product provider. Should you decide to use the services of AJI, we will receive a referral fee of 10% of the net income received by AJI for the services they provide to you. 6. If there is anything of particular importance to you, please contact this office and Strutt & Parker will try to have the information checked for you. Strutt & Parker is a trading style of BNP Paribas Real Estate Advisory & Property Management UK Limited. Template by Fourwalls. Photographs taken May 2026. Particulars prepared May 2026.

