



Bedwell Hall, Bedwell Park, Essendon, Hertfordshire

3 Bedwell Hall
Bedwell Park
Cucumber Lane
Essendon
AL9 6GJ

Entrance hall | Reception room
Kitchen/Diner | 2 Bedrooms
2 Bathrooms | Private gardens
Communal gardens | Garage
Allocated parking | EPC Rating D

A spacious apartment forming part of a Grade II listed House. Within the elegant grounds of Bedwell Park is this two bedroom, two bathroom apartment. Benefits include its own private rear and side garden, allocated parking and a garage.

The property

Flat 3 Bedwell Hall is a beautifully appointed ground floor apartment with access from the elegant communal entrance hall or from the private garden. It is situated in the gated Grade II prestigious Bedwell Park, surrounded by around 150 acres of grounds and Essendon golf course.

On entering, the hall leads to the generous 26 ft. reception room with dual aspect windows and doors to the garden, double

glass panelled doors flow into the kitchen/diner making it sociable and semi open plan. The kitchen, also accessed from the hall has an excellent range of wall and base units with fitted dishwasher, oven

and hob with a tiled floor. From the kitchen, doors open onto the private kitchen garden, a lovely spot for breakfast, reading and potting. The principal bedroom overlooking the garden has a range of fitted wardrobes and dressing table with an en suite shower. Bedroom two, also a double bedroom benefits fitted wardrobes and has use of the family bathroom.

Outside

The rear private garden is delightful, it has a good size patio with space for a table and chairs leading to the mainly laid lawn that is well secluded by trees, hedges, mature shrubs and plants. The communal gardens are well maintained with formal and informal areas with easy access to Essendon golf club. The long drive from the road leads to the electric gated entrance, behind the entrance there is an allocated parking space. For further parking, there is a garage en bloc.





Location

Bedwell Park is situated in the charming village of Essendon with a village church and inn. More comprehensive facilities are available in nearby Hatfield, approximately 3 miles to the west or Hertford 5 miles north. Communications are excellent, with a direct train service to London Kings Cross from Hatfield taking approximately 30 minutes. The A1(M) is 2 miles away, linking with the M25. Luton Airport is 12 miles away. The underground line is approximately 8 miles away. There is a wide range of excellent schools in the district. Sporting facilities include Bedwell Park, Hatfield London Country Club, and Brookmans Park Golf.

Bedwell Hall is situated within Essendon Country Club, located deep in the heart of the Hertfordshire countryside in an area of sublime natural beauty of about 430 acres. It offers two championship courses a restaurant and function rooms.





General

Local Authority: Welwyn Hatfield Borough Council

Services: Mains water, electricity, gas, and private drainage

Council Tax: Band G

Tenure: Share of Freehold

Guide Price: £945,000

St Albans

15 London Road, St Albans, AL1 1LA

01727 840285

stalbans@struttandparker.com
struttandparker.com

[@struttandparker](#)

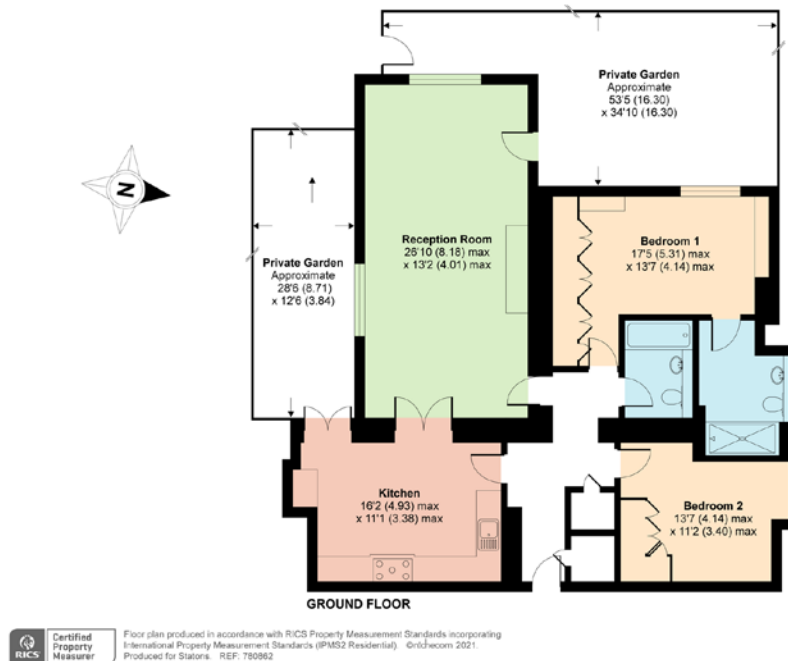
[/struttandparker](#)

50 offices across England and Scotland,
including Prime Central London

Bedwell Hall, Bedwell Park, Cucumber Lane, Essendon, Hatfield, AL9

Approximate Area = 1202 sq ft / 111.6 sq m

For identification only - Not to scale



IMPORTANT NOTICE: Strutt & Parker gives notice that: 1. These particulars do not constitute an offer or contract or part thereof. 2. All descriptions, photographs and plans are for guidance only and should not be relied upon as statements or representations of fact. All measurements are approximate and not necessarily to scale. Any prospective purchaser must satisfy themselves of the correctness of the information within the particulars by inspection or otherwise. 3. Strutt & Parker does not have any authority to give any representations or warranties whatsoever in relation to this property (including but not limited to planning/building regulations), nor can it enter into any contract on behalf of the Vendor. 4. Strutt & Parker does not accept responsibility for any expenses incurred by prospective purchasers in inspecting properties which have been sold, let or withdrawn. 5. We are able to refer you to SPF Private Clients Limited ("SPF") for mortgage broking services, and to Alexander James Interiors ("AJI"), an interior design service. Should you decide to use the services of SPF, we will receive a referral fee from them of 25% of the aggregate of the fee paid to them by you for the arrangement of a mortgage and any fee received by them from the product provider. Should you decide to use the services of AJI, we will receive a referral fee of 10% of the net income received by AJI for the services they provide to you. 6. If there is anything of particular importance to you, please contact this office and Strutt & Parker will try to have the information checked for you. Photographs taken August 2019. Particulars prepared August 2019. Strutt & Parker is a trading style of BNP Paribas Real Estate Advisory & Property Management UK Limited.