



Old Woodhayne Farm, Bishopswood, East Devon

STRUTT & PARKER
BNP PARIBAS GROUP 

Old Woodhayne Farm, Bishopswood, East Devon TA20 3SB

A charming Grade II Listed farmhouse in the parish of Yarcombe, with cottages and extensive outbuildings including a detached office set in approximately 20 acres in the picturesque Blackdown Hills.

A303 2.9 miles, equidistant from the market towns of Chard and Honiton 6.5 miles, Taunton mainline station 11.0 miles (1 hour 40 minutes to London Paddington), Exeter airport 25 miles, London Heathrow airport 124 miles

Main house: Drawing room | Sitting room
Dining room | Kitchen/breakfast room | Garden room | Cloakroom | Principal bedroom with en suite bathroom | Two further en suite bedrooms
EPC rating E

Cottage 1: Sitting room | Kitchen | Two bedrooms | Bathroom | Cloakroom
EPC rating D

Cottage 2: Sitting room | Kitchen | One bedroom
Bathroom | EPC rating D

Workshop | Office | Garage/Games room/Cider room | Barns | Gardens | Orchard | Woodland
Three paddocks | Approximately 20 acres

The property

Old Woodhayne Farm is a beautifully presented Grade II Listed farmhouse dating from the 16th century offering attractive accommodation configured over two floors. The farmhouse has a wealth of charming features including original fireplaces, exposed timber beams and stonework. The property benefits from a detached barn converted into two self-contained cottages as well as further extensive outbuildings. Old Woodhayne Farm is surrounded by its own land and enjoys outstanding views over the Yarty Valley in the Blackdown Hills Area of Outstanding Natural Beauty.

An entrance hall leads you through to the ground floor reception rooms that provide attractive and flexible living space. The drawing room features exposed timber beams and an impressive inglenook fireplace with a woodburning stove and exposed stone surround. Adjoining the drawing room is the formal dining room that has an inglenook fireplace. The sitting room provides further welcoming reception space and provides access to the spacious garden room that enjoys wonderful views over the garden and the countryside beyond. The Smallbone fitted kitchen has an Aga. There is also a lobby and cloakroom.

The first floor has three well-presented en suite double bedrooms. The principal bedroom features a triple-aspect allowing for light-filled accommodation.

The two self-contained cottages could be used for multigenerational living or for use as holiday lets with income potential subject to the necessary consents. Both cottages provide well-presented accommodation and each have generously sized sitting rooms, fully equipped kitchens and family bathrooms. One cottage has two bedrooms whilst the other is one bedroomed with the possibility of a further bedroom being added in the loft space. Adjoining one of the cottages is a useful workshop.

Outside

The farmhouse and cottages are set in far-reaching, rolling grounds and affords stunning views across the surrounding countryside. The farmhouse has a beautiful landscaped garden, with pristine lawns, mature specimen trees, a vegetable plot, an orchard and well-stocked border flowerbeds. The grounds include three fields, open woodland, a greenhouse and potting shed and two well stocked fish ponds all within a ring fenced boundary.







Kitchen



Garden Room



Dining Room



Bedroom



Principal Bedroom



Office



Cottage 1



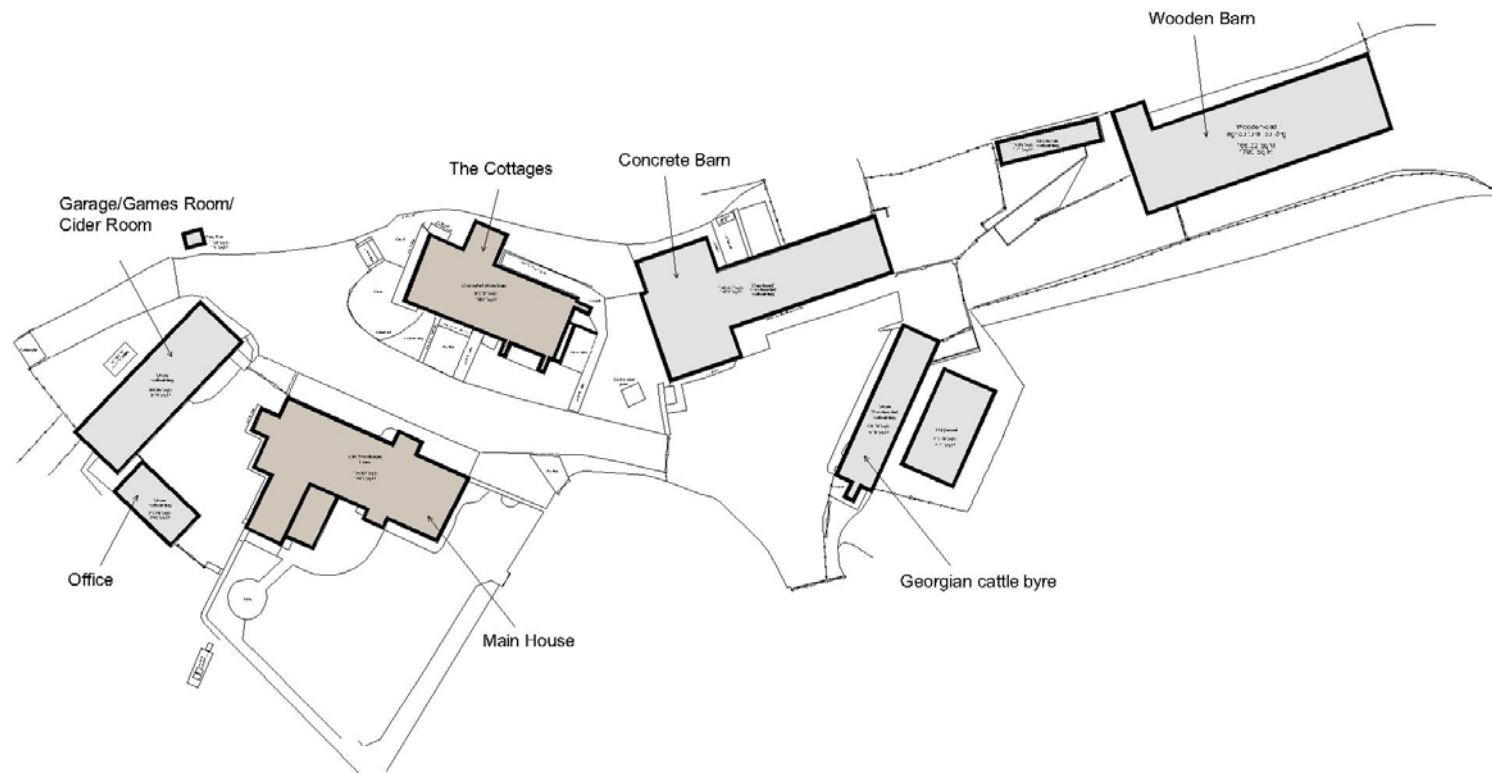
Drawing Room

Old Woodhayne Farm benefits from numerous outbuildings including a converted barn currently used as a fully equipped office heated by a woodburner providing an ideal setting for home working as well as a further barn currently used as a garage, games room, laundry room, cider room and cider press which has the potential for commission into further accommodation (subject to consents). The other outbuildings include a concrete barn currently used for storage which would make ideal space for six loose boxes for horses as well as a wooden barn and Georgian cattle byre that provide development opportunities subject to the necessary consents. There is plenty of parking available at the property on tarmac driveways and hardstanding.

Location

Old Woodhayne Farm is set in a rural position, close to the small village of Bishopswood and surrounded by the idyllic rolling countryside of the Blackdown Hills. Bishopswood has a village hall, a local pub and chapel. Further amenities are available in the nearby historical village of Yarcombe which has a Norman church and an active community that boasts several music and singing groups, a skittles group and an award winning amateur dramatics group. The village also has Saturday farmers and crafts markets as well as two well-renowned and award winning inns. Taunton's mainline station is 11 miles away and has regular services to London Paddington in 1 hour 40 minutes. Communication links are good with the A303 is three miles away and the M5 accessible near Taunton, nine miles away. Both state and private schools are available in the area.

Old Woodhayne Farm, Bishopswood, Chard



FOR ILLUSTRATIVE PURPOSES ONLY - NOT TO SCALE

The position & size of doors, windows, appliances and other features are approximate only.
© ehous. Unauthorised reproduction prohibited. Drawing ref. dig/8517656/SS





Old Woodhayne Farm

Total Area (8.21 ha / 20.29 ac)

This plan is published for the convenience of the purchaser only. Its accuracy is not guaranteed and it is expressly excluded from any contract.

Based on Ordnance Survey 1:2,500 mapping with the permission of the Controller of HMSO © Crown Copyright Licence No ES 100018525

Not to Scale. Drawing No. W17725-01 | Date 02.08.22



Directions

From Exeter, take the A30 towards Honiton and continue on the A30 for 19 miles, before continuing onto the A303. After a further two miles, turn left, following the sign for Taunton and Corfe. After two miles, turn right onto Royston Road, then after half a mile, turn right onto a lane. Follow the lane for just over half a mile, go over the cattle grid and you will arrive at the property.

General

Local Authority: East Devon District Council

Services: Mains electricity, private water and drainage which we understand is compliant with current regulations. Oil-fired central heating.

Council Tax: Farmhouse Band E.

Cottages Band A

Tenure: Freehold

Guide Price: £1,565,000

Right of Way: The property has a right of way over the entrance to a private track that leads to the property.

Exeter

24 Southernhay West, Exeter, Devon EX1 1PR

01392 215631

exeter@struttandparker.com
struttandparker.com

 @struttandparker

 /struttandparker

Over 45 offices across England and Scotland, including Prime Central London

Floorplans

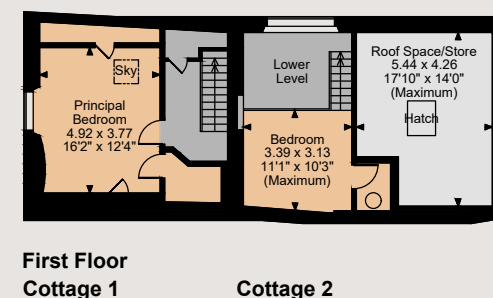
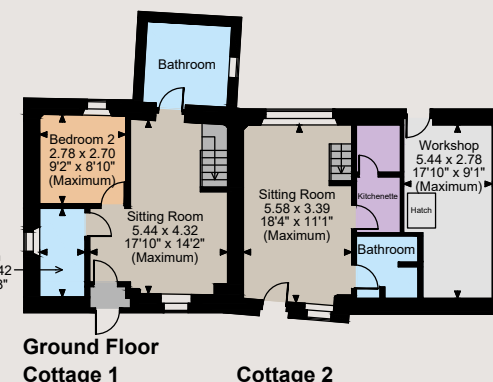
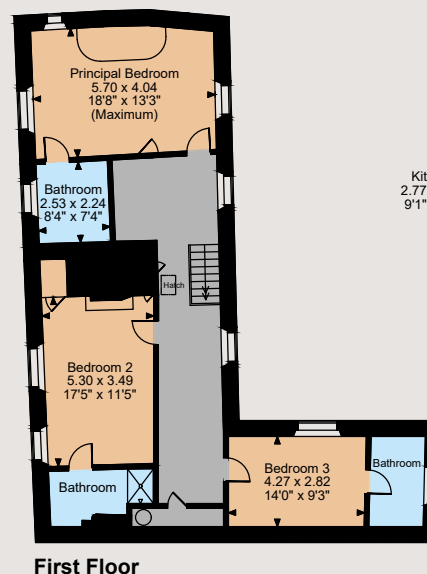
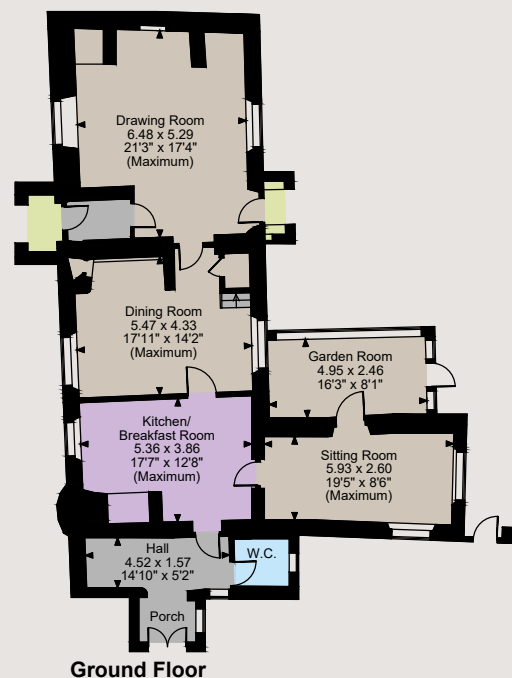
House internal area 2,562 sq ft (238 sq m)

Cottages internal area 1,279 sq ft (119 sq m)

Workshop and Store internal area 378 sq ft (35 sq m)

Total internal area 4,219 sq ft (392 sq m)

For identification purposes only.



The position & size of doors, windows, appliances and other features are approximate only.

© ehouse. Unauthorised reproduction prohibited. Drawing ref. dig/8515026/SS

IMPORTANT NOTICE: Strutt & Parker gives notice that: 1. These particulars do not constitute an offer or contract or part thereof. 2. All descriptions, photographs and plans are for guidance only and should not be relied upon as statements or representations of fact. All measurements are approximate and not necessarily to scale. Any prospective purchaser must satisfy themselves of the correctness of the information within the particulars by inspection or otherwise. 3. Strutt & Parker does not have any authority to give any representations or warranties whatsoever in relation to this property (including but not limited to planning/building regulations), nor can it enter into any contract on behalf of the Vendor. 4. Strutt & Parker does not accept responsibility for any expenses incurred by prospective purchasers in inspecting properties which have been sold, let or withdrawn. 5. We are able to refer you to SPF Private Clients Limited ("SPF") for mortgage broking services, and to Alexander James Interiors ("AJI"), an interior design service. Should you decide to use the services of SPF, we will receive a referral fee from them of 25% of the aggregate of the fee paid to them by you for the arrangement of a mortgage and any fee received by them from the product provider. Should you decide to use the services of AJI, we will receive a referral fee of 10% of the net income received by AJI for the services they provide to you. 6. If there is anything of particular importance to you, please contact this office and Strutt & Parker will try to have the information checked for you. Photographs taken August 2022. Particulars prepared August 2022. Strutt & Parker is a trading style of BNP Paribas Real Estate Advisory & Property Management UK Limited