



Broadwalk Court, Kensington, W8

For the finer things in property.

**STRUTT
& PARKER**

BNP PARIBAS GROUP

Broadwalk Court, Kensington, W8

A well-appointed studio situated on the fourth floor (with lift) of a charming Art Deco mansion building.

This bright apartment benefits from ample storage including a built in wardrobe making an ideal pied-a-terre or investment property and includes communal heating and hot water. There is also, a separate storage cupboard in the corridor demised to the flat, suitable for storing larger items.

Broadwalk Court is exceptionally well-located moments from the amenities of Notting Hill while the shops, bars and restaurants of Kensington are also close by. The property is conveniently located for the green open spaces of Kensington Palace Gardens and Hyde Park. Notting Hill Gate (Circle, Central and District Lines) and High Street Kensington (Circle and District Lines) offer convenient local transport links on the London Underground.

Studio | Separate kitchen | Bathroom | Concierge Lift | EPC Rating C

Terms

Tenure: Share of Freehold

Service Charge: £677 for the period 24/06/24 – 28/09/29 paid quarterly in advance (Includes communal heating and hot water).

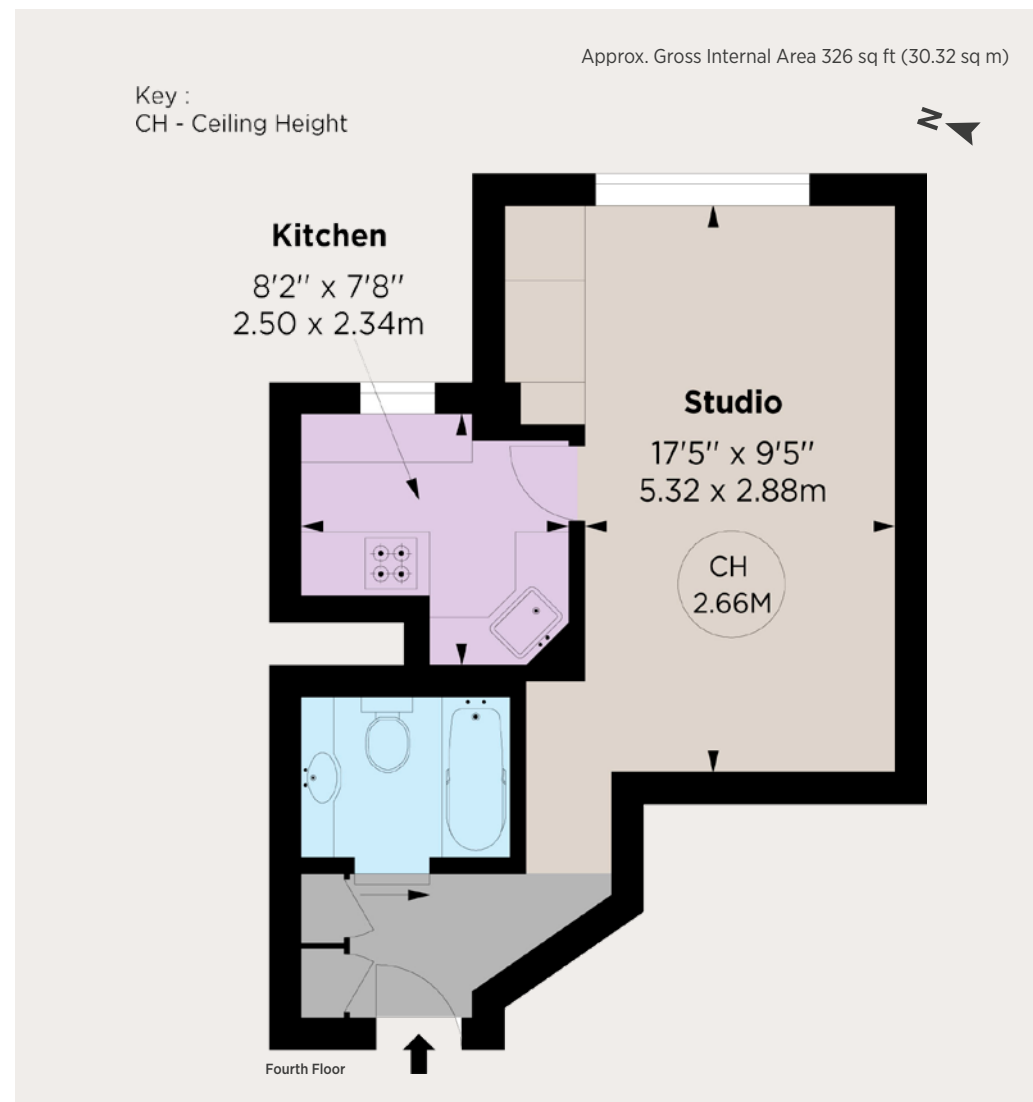
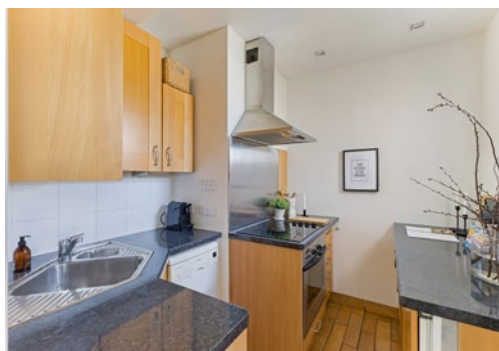
Contribution to the sinking fund £325.56 for the period 24/06/24 – 28/09/29 paid quarterly

Ground Rent: £0

Council Tax: Band C

Local Authority: The Royal Borough of Kensington and Chelsea

Asking Price: £425,000



IMPORTANT NOTICE

Strutt & Parker gives notice that: 1. These particulars do not constitute an offer or contract or part thereof. 2. All descriptions, photographs and plans are for guidance only and should not be relied upon as statements or representations of fact. All measurements are approximate and not necessarily to scale. Any prospective purchaser must satisfy themselves of the correctness of the information within the particulars by inspection or otherwise. 3. Strutt & Parker does not have any authority to give any representations or warranties whatsoever in relation to this property (including but not limited to planning/building regulations), nor can it enter into any contract on behalf of the Vendor. 4. Strutt & Parker does not accept responsibility for any expenses incurred by prospective purchasers in inspecting properties which have been sold, let or withdrawn. 5. We are able to refer you to SPF Private Clients Limited ("SPF") for mortgage broking services, and to Alexander James Interiors ("AJI"), an interior design service. Should you decide to use the services of SPF, we will receive a referral fee from them of 25% of the aggregate of the fee paid to them by you for the arrangement of a mortgage and any fee received by them from the product provider. Should you decide to use the services of AJI, we will receive a referral fee of 10% of the net income received by AJI for the services they provide to you. 6. If there is anything of particular importance to you, please contact this office and Strutt & Parker will try to have the information checked for you. Photographs taken April 2025. Particulars prepared November 2024. Strutt & Parker is a trading style of BNP Paribas Real Estate Advisory & Property Management UK Limited.

Kensington

103 Kensington Church Street, London W8 7LN

020 7938 3666

kensington@struttandparker.com



Over 50 offices across England and Scotland,
including Prime Central London

For the finer things in property.

