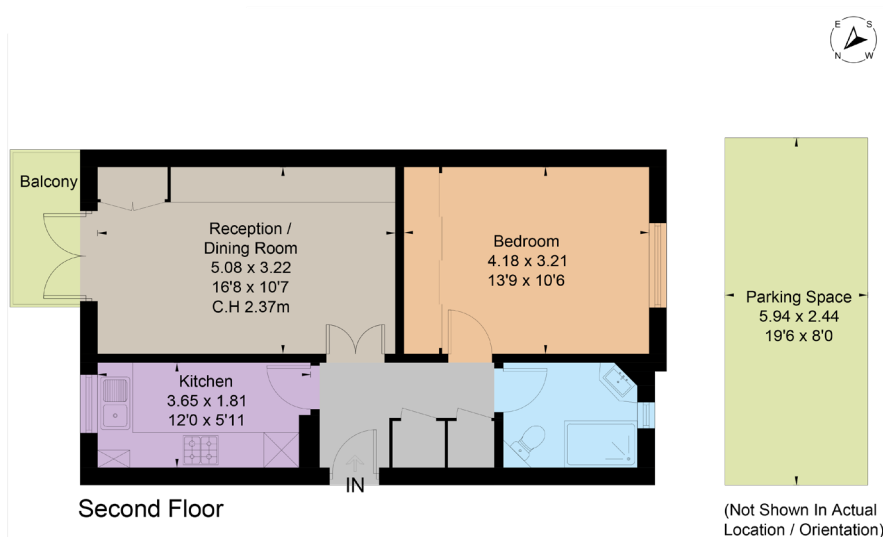


# Brompton Park Crescent

Fulham, SW6







**A bright one bedroom, second floor flat located in this popular residential gated development.**

**The flat benefits from balcony, newly fitted kitchen and bathroom; off street parking and use of a private gym and swimming pool.**

Brompton Park Crescent is well placed, just moments from West Brompton tube station and within easy reach of Fulham Broadway with its transport links, shops, bars and restaurants.

## Floorplans

**Gross internal area 522 sq ft (48.5 sq m)**  
**For identification purposes only.**

## General

**Tenure:** Leasehold 999 year lease from 21 December 1984

**Local Authority:** The London borough of Hammersmith and Fulham

**Service Charge:** £5,500 per annum

**Ground Rent:** £100 per annum

**Council Tax:** Band E

**EPC Rating:** C

**Parking:** Off street parking

**Broadband:** Installed

**Asking Price:** £500,000

## Fulham

701 Fulham Road, London SW6 5UL

**020 7731 7100**

fulham@struttandparker.com  
struttandparker.com

**IMPORTANT NOTICE:** Strutt & Parker gives notice that: 1. These particulars do not constitute an offer or contract or part thereof. 2. All descriptions, photographs and plans are for guidance only and should not be relied upon as statements or representations of fact. All measurements are approximate and not necessarily to scale. Any prospective purchaser must satisfy themselves of the correctness of the information within the particulars by inspection or otherwise. 3. Strutt & Parker does not have any authority to give any representations or warranties whatsoever in relation to this property (including but not limited to planning/building regulations), nor can it enter into any contract on behalf of the Vendor. 4. Strutt & Parker does not accept responsibility for any expenses incurred by prospective purchasers in inspecting properties which have been sold, let or withdrawn. 5. We are able to refer you to SPF Private Clients Limited ("SPF") for mortgage broking services, and to Alexander James Interiors ("AJI"), an interior design service. Should you decide to use the services of SPF, we will receive a referral fee from them of 25% of the aggregate of the fee paid to them by you for the arrangement of a mortgage and any fee received by them from the product provider. Should you decide to use the services of AJI, we will receive a referral fee of 10% of the net income received by AJI for the services they provide to you. 6. If there is anything of particular importance to you, please contact this office and Strutt & Parker will try to have the information checked for you. Photographs taken August 2025. Particulars prepared September 2025. Strutt & Parker is a trading style of BNP Paribas Real Estate Advisory & Property Management UK Limited



@struttandparker

Over 50 offices across England and Scotland,  
including Prime Central London

**For the finer things in property.**

