

Bronsart Road
Fulham



Strutt
& Parker

Land and property. Since 1885.

Exceptional fully refurbished family home with roof terrace and outdoor entertaining space

Having undergone a comprehensive back-to-brick refurbishment, this beautifully crafted four-bedroom house extends to approximately 1,600 sq ft and offers a rare combination of character, contemporary design, and exceptional attention to detail throughout.

The ground floor is centred around a stunning double reception room, where engineered oak flooring, an exposed brick chimney breast and a wood-burning stove create a warm and inviting living space. To the rear, a beautifully appointed shaker-style kitchen features quartz worktops, high end appliances including a Quooker tap, Fisher and Paykel fridge freezer and Rangemaster range. The continuation of the oak flooring beautifully connects the ground floor and bi-fold doors open seamlessly onto the garden beyond. Designed for entertaining, the landscaped garden benefits from both an outdoor kitchen and a striking outdoor fireplace, creating an ideal setting for al fresco dining and year-round enjoyment.

The first floor is dedicated to an impressive principal suite, complete with extensive fitted wardrobes and a luxurious bathroom featuring both a separate bath and walk-in shower. A further double bedroom and stylish family bathroom complete this level.



Occupying the upper floor is a versatile study or double bedroom with bi-fold doors opening onto a roof terrace. Thoughtfully designed for entertaining, the terrace is served by a dedicated drinks fridge, making it the perfect spot for evening sundowners. Also on this floor is a substantial double bedroom and luxurious shower room.

This exceptional home combines timeless materials and craftsmanship with modern convenience, creating a turnkey property ideally suited to contemporary family living.

Location

Bronsart Road is a sought-after residential street in the heart of Fulham, ideally positioned between the amenities of Munster Road and Fulham Road. Residents enjoy easy access to an excellent selection of independent cafés, restaurants and shops, while the green open spaces of Bishops Park and Fulham Palace are within easy reach. Parsons Green Underground Station (District Line) is approximately 0.8 miles away, providing convenient connections to the West End and the City.

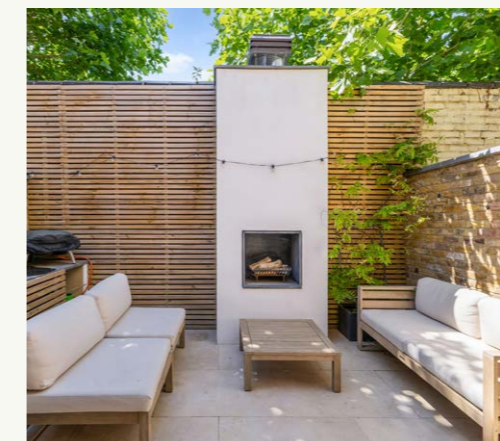
Postcode region: SW6

General

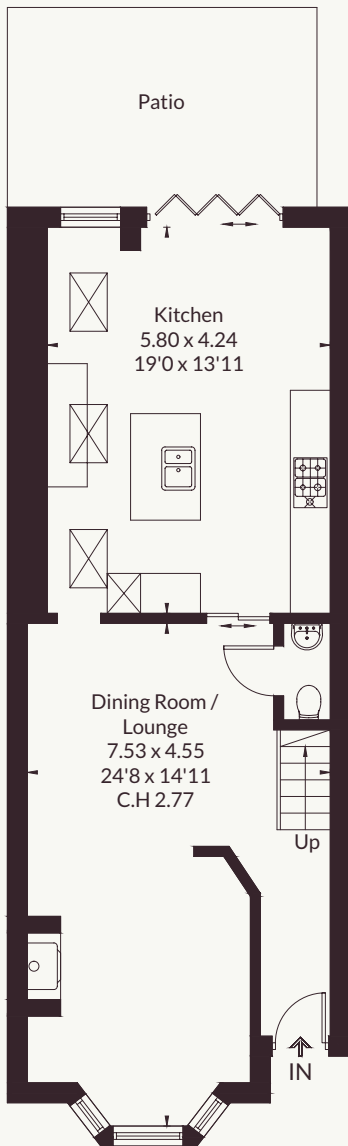
Local Authority: Hammersmith and Fulham
Parking: Residents on street parking
Council Tax: Band F
EPC Rating: E
Mobile and Broadband checker: Information can be found here <https://checker.ofcom.org.uk/en-gb/>

1,609 sq ft (149.5 sq m)
4 bedrooms
3 bathrooms
Freehold

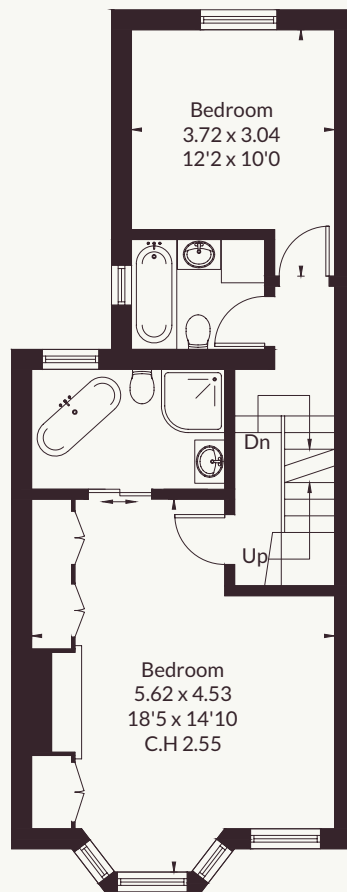
Guide price £1,595,000



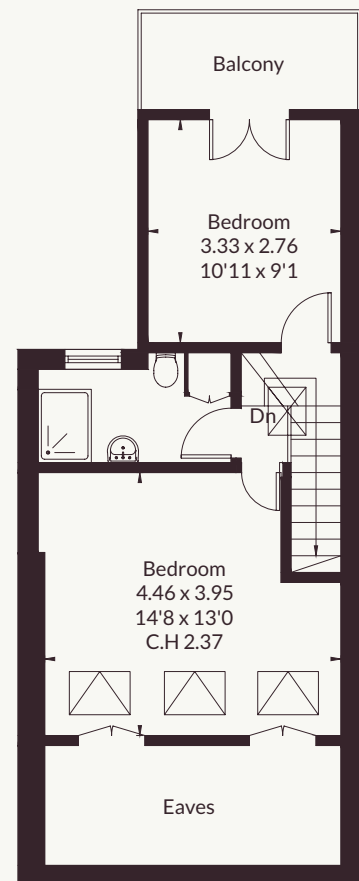
Approximate Floor Area = 149.5 sq m / 1609 sq ft (Including Eaves)



Ground Floor



First Floor



Second Floor

This floor plan has been drawn in accordance with RICS Property Measurement 2nd edition. All measurements, including the floor area, are approximate and for illustrative purposes only. @fourwalls-group.com #110837

Strutt & Parker Fulham

701 Fulham Road, London, SW6 5UL

020 7731 7100 | fulham@struttandparker.com



@struttandparker struttandparker.com

IMPORTANT NOTICE: Strutt & Parker gives notice that: 1. These particulars do not constitute an offer or contract or part thereof. 2. All descriptions, photographs and plans are for guidance only and should not be relied upon as statements or representations of fact. All measurements are approximate and not necessarily to scale. Any prospective purchaser must satisfy themselves of the correctness of the information within the particulars by inspection or otherwise. 3. Strutt & Parker does not have any authority to give any representations or warranties whatsoever in relation to this property (including but not limited to planning/building regulations), nor can it enter into any contract on behalf of the Vendor. 4. Strutt & Parker does not accept responsibility for any expenses incurred by prospective purchasers in inspecting properties which have been sold, let or withdrawn. 5. We are able to refer you to SPF Private Clients Limited ("SPF") for mortgage broking services, and to Alexander James Interiors ("AJI"), an interior design service. Should you decide to use the services of SPF, we will receive a referral fee from them of 25% of the aggregate of the fee paid to them by you for the arrangement of a mortgage and any fee received by them from the product provider. Should you decide to use the services of AJI, we will receive a referral fee of 10% of the net income received by AJI for the services they provide to you. 6. If there is anything of particular importance to you, please contact this office and Strutt & Parker will try to have the information checked for you. Strutt & Parker is a trading style of BNP Paribas Real Estate Advisory & Property Management UK Limited. Template by Fourwalls. Photographs taken June 2026. Particulars prepared June 2026.

Strutt
& Parker

Land and property. Since 1885.