

Brunswick Gardens,
Kensington



Strutt
& Parker

Land and property. Since 1885.

Set in a handsome stucco fronted terrace, typical of the hugely sought after Cherry Tree Estate, this second floor apartment has excellent proportions and a beautiful west facing aspect.

A well-appointed apartment in the hugely sought after Cherry Tree Estate. Set on the second floor the property has excellent proportions, extends to 640 sq. ft and comprises a large open-plan reception room with modern fitted kitchen, double bedroom with en-suite and a separate WC.

The building has just undergone significant refurbishment inside and out, and so is presented in immaculate condition.



Location

Brunswick Gardens is ideally situated for all the shops, restaurants and transport facilities of Notting Hill Gate and Kensington High Street. Kensington Gardens and Hyde Park are also just a stone's throw away.

Postcode region: W8

General

Tenure: Share of Freehold, 998 years
Local Authority: Royal Borough of Kensington and Chelsea
Council Tax: Band F
EPC Rating: C
Service Charge: £1,018 per quarter, including building insurance
Ground Rent: Peppercorn
Parking: Permit
Mobile coverage and broadband: Information can be found here: <https://checker.ofcom.org.uk/en-gb/mobile-coverage>

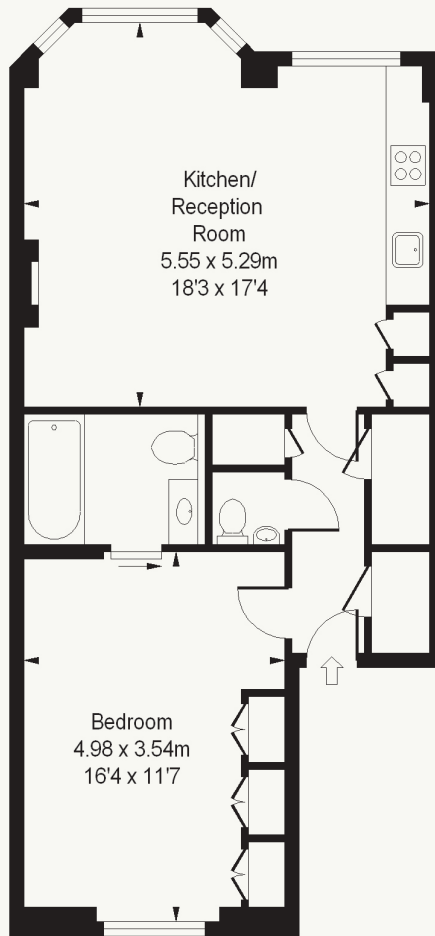
640 sq ft (59.46 sq m)
Period property
Good decoration
Upper floor
1 bedroom/1 bathroom
Share of Freehold

Guide price £1,000,000



Brunswick Gardens, W8 4AN

Approximate Gross Internal Area
640 sq ft / 59.46 sq m



Second Floor

ILLUSTRATION FOR IDENTIFICATION PURPOSES ONLY

ALL MEASUREMENTS ARE MAXIMUM, AND INCLUDE WINDOW BAYS AND WARDROBES WHERE APPLICABLE
THIS PLAN MUST NOT BE REPRODUCED BY ANY OTHER PERSON WITHOUT PERMISSION

Strutt & Parker Kensington

103 Kensington Church Street, London W8 7LN
020 7938 3666 | kensington@struttandparker.com



@struttandparker

struttandparker.com

IMPORTANT NOTICE: Strutt & Parker gives notice that: 1. These particulars do not constitute an offer or contract or part thereof. 2. All descriptions, photographs and plans are for guidance only and should not be relied upon as statements or representations of fact. All measurements are approximate and not necessarily to scale. Any prospective purchaser must satisfy themselves of the correctness of the information within the particulars by inspection or otherwise. 3. Strutt & Parker does not have any authority to give any representations or warranties whatsoever in relation to this property (including but not limited to planning/building regulations), nor can it enter into any contract on behalf of the Vendor. 4. Strutt & Parker does not accept responsibility for any expenses incurred by prospective purchasers in inspecting properties which have been sold, let or withdrawn. 5. We are able to refer you to SPF Private Clients Limited ("SPF") for mortgage broking services, and to Alexander James Interiors ("AJI"), an interior design service. Should you decide to use the services of SPF, we will receive a referral fee from them of 25% of the aggregate of the fee paid to them by you for the arrangement of a mortgage and any fee received by them from the product provider. Should you decide to use the services of AJI, we will receive a referral fee of 10% of the net income received by AJI for the services they provide to you. 6. If there is anything of particular importance to you, please contact this office and Strutt & Parker will try to have the information checked for you. Strutt & Parker is a trading style of BNP Paribas Real Estate Advisory & Property Management UK Limited. Photographs taken April 2026. Particulars prepared April 2026.

Strutt & Parker

Land and property. Since 1885.