

Brunswick Gardens,  
Kensington



Strutt  
& Parker

Land and property. Since 1885.

An impressive and wide, beautifully presented 5/6 bedroom, white stucco-fronted, family house, comprising 4,472 sq ft, with excellent entertaining space and proportions as well as having very good natural light.



#### Location

Brunswick Gardens is a cherry tree lined street located just off Kensington Church Street and the shopping and transport facilities of Kensington High Street and Notting Hill Gate. Kensington Gardens and Holland Park are also nearby.

Postcode region: W8

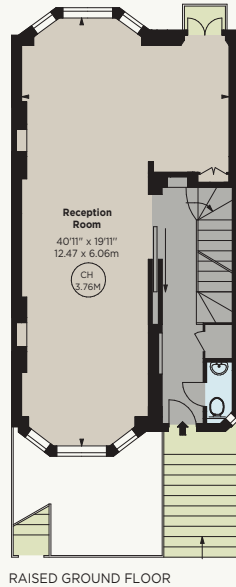
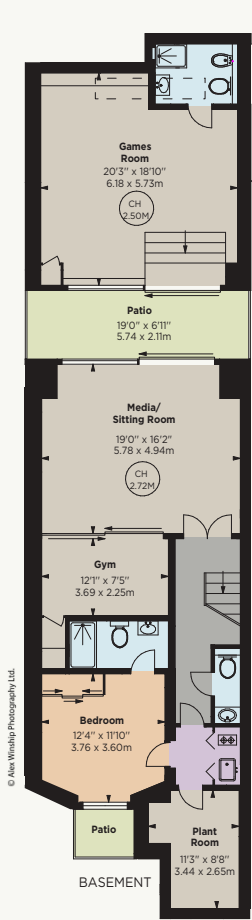
#### General

Local Authority: Royal Borough of Kensington & Chelsea  
Council Tax: Band H  
EPC Rating: D  
Parking: Residents' parking  
Mobile coverage and broadband: Information can be found here: <https://checker.ofcom.org.uk/en-gb/mobile-coverage>

4,472 sq ft (415.54 sq m)  
38' private garden  
Beautifully proportioned  
reception room  
5/6 bedrooms  
Stunning stone staircase  
Freehold

Guide price £11,250,000





### Brunswick Gardens, W8

APPROX. GROSS INTERNAL AREA \*  
4068 Sq Ft - 378.01 Sq M  
(Excluding Games Room)

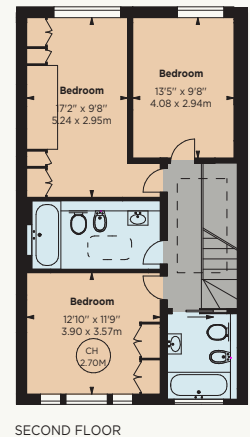
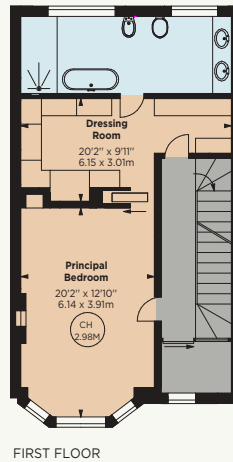
APPROX. GAMES ROOM AREA \*  
403 Sq Ft - 37.53 Sq M

TOTAL APPROX. GROSS INTERNAL AREA \*  
4472 Sq Ft - 415.54 Sq M



This floorplan is for GUIDANCE ONLY and NOT FOR VALUATION purposes.

Key :  
CH - Ceiling Height



© Alex Winship Photography Ltd.

ALEX WINSHIP  
Photography

\* Figures for guidance only, not to scale or valuation purposes. All measurements are approximate and have been prepared in accordance with the current edition of the RICS Code of Measuring Practice.

MIP  
Certified Property Measure

## James Gow - Private Client Department

103 Kensington Church Street, London W8 7LN

07811 195930 | 020 7938 3666 | James.gow@struttandparker.com



@struttandparker

struttandparker.com

IMPORTANT NOTICE: Strutt & Parker gives notice that: 1. These particulars do not constitute an offer or contract or part thereof. 2. All descriptions, photographs and plans are for guidance only and should not be relied upon as statements or representations of fact. All measurements are approximate and not necessarily to scale. 3. Strutt & Parker does not have any authority to give any representations or warranties whatsoever in relation to this property (including but not limited to planning/building regulations), nor can it enter into any contract on behalf of the Vendor. 4. Strutt & Parker does not accept responsibility for any expenses incurred by prospective purchasers in inspecting properties which have been sold, let or withdrawn. 5. We are able to refer you to SPF Private Clients Limited ("SPF") for mortgage broking services, and to Alexander James Interiors ("AJI"), an interior design service. Should you decide to use the services of SPF, we will receive a referral fee from them of 25% of the aggregate of the fee paid to them by you for the arrangement of a mortgage and any fee received by them from the product provider. Should you decide to use the services of AJI, we will receive a referral fee of 10% of the net income received by AJI for the services they provide to you. 6. If there is anything of particular importance to you, please contact this office and Strutt & Parker will try to have the information checked for you. Strutt & Parker is a trading style of BNP Paribas Real Estate Advisory & Property Management UK Limited. Photographs taken April 2026. Particulars prepared April 2026.

# Strutt & Parker

Land and property. Since 1885.