

Bryanston Square, Marylebone



Strutt & Parker

Land and property. Since 1885.

A beautifully proportioned garden square residence in the heart of Marylebone.

Set within an elegant Georgian townhouse overlooking the prestigious Bryanston Square Garden, this exceptional apartment extends to approximately 2,675 sqft across the ground and first floors.

The magnificent 30-foot reception room is the focal point of the home, with three floor-to-ceiling windows opening onto an ornamental balcony and framing uninterrupted views across the private gardens. Gorgeous lateral living space is complemented by refined contemporary interiors, creating a rare balance of grandeur and understated sophistication.

The apartment features a spacious eat-in kitchen, dining room, utility room and three beautifully proportioned bedrooms - all with en suites.

Residents also enjoy access to the exclusive communal gardens of Bryanston Square.



Location

Ideally positioned moments from Hyde Park, Regent's Park and the boutiques and restaurants of Marylebone Village, the property is superbly connected via Marble Arch, Paddington, Edgware Road and Marylebone Stations.

Postcode region: W1H

General

Tenure: Leasehold, 170 years 10 months
Local Authority: City of Westminster
Council Tax: Band H
EPC Rating: C
Service Charge: £9,320 pa
Ground Rent: Peppercorn
Parking: Resident's permit
Mobile coverage and broadband: Information can be found here: <https://checker.ofcom.org.uk/en-gb/mobile-coverage>

2,675 sq ft (248 sq m)

Lift

Aircon

Flat

Balcony

Leasehold

Guide price £4,950,000



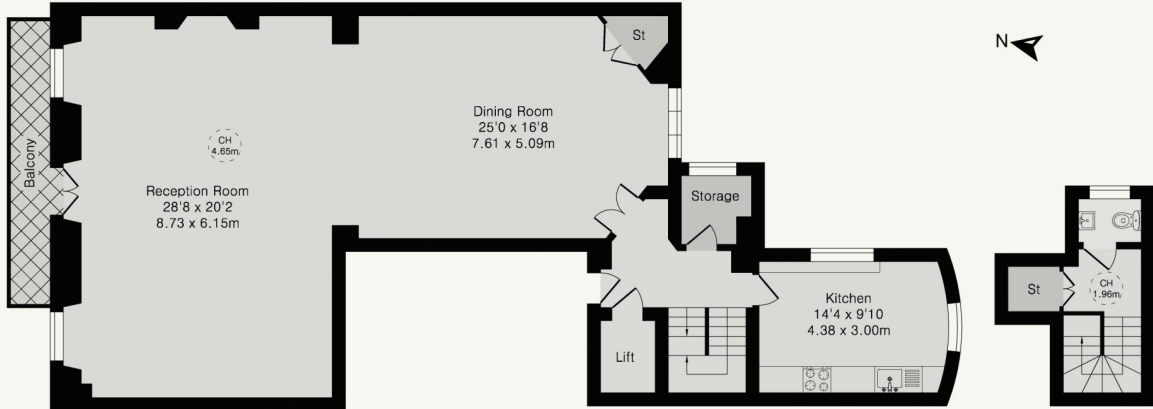
Approximate Gross Internal Area 2675 sq ft - 248 sq m

Ground Floor Area 1065 sq ft – 99 sq m

Mezzanine Area 207 sq ft – 19 sq m

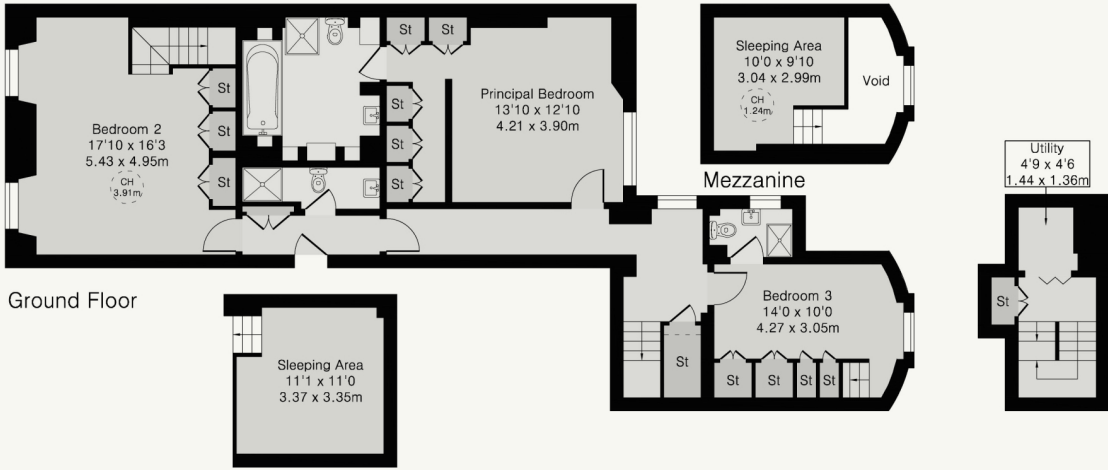
First Floor Area 1310 sq ft – 121 sq m

Second Floor Area 93 sq ft – 9 sq m



First Floor

Second Floor



Ground Floor

Mezzanine

First Floor

Strutt & Parker

24 Savile Row, London W1S 2ES

020 4525 3189 | Charles.Medina@struttandparker.com



@struttandparker

struttandparker.com

**Strutt
& Parker**

Land and property. Since 1885.

IMPORTANT NOTICE: Strutt & Parker gives notice that: 1. These particulars do not constitute an offer or contract or part thereof. 2. All descriptions, photographs and plans are for guidance only and should not be relied upon as statements or representations of fact. All measurements are approximate and not necessarily to scale. Any prospective purchaser must satisfy themselves of the correctness of the information within the particulars by inspection or otherwise. 3. Strutt & Parker does not have any authority to give any representations or warranties whatsoever in relation to this property (including but not limited to planning/building regulations), nor can it enter into any contract on behalf of the Vendor. 4. Strutt & Parker does not accept responsibility for any expenses incurred by prospective purchasers in inspecting properties which have been sold, let or withdrawn. 5. We are able to refer you to SPF Private Clients Limited ("SPF") for mortgage broking services, and to Alexander James Interiors ("AJI"), an interior design service. Should you decide to use the services of SPF, we will receive a referral fee from them of 25% of the aggregate of the fee paid to them by you for the arrangement of a mortgage and any fee received by them from the product provider. Should you decide to use the services of AJI, we will receive a referral fee of 10% of the net income received by AJI for the services they provide to you. 6. If there is anything of particular importance to you, please contact this office and Strutt & Parker will try to have the information checked for you. Strutt & Parker is a trading style of BNP Paribas Real Estate Advisory & Property Management UK Limited. Photographs taken May 2026. Particulars prepared May 2026.