



4 Buckley Court, Cockfosters, Hertfordshire

STRUTT & PARKER
BNP PARIBAS GROUP

4 Buckley Court Cockfosters EN4 0JT

A charming two bedroom ground floor apartment. The property features front and rear aspects, 25ft reception room and two parking spaces.

Cockfosters underground station 0.7 miles, Hadley Wood Rail Station 1.4 miles, New Barnet mainline station 1.9 miles (18 minutes to London Kings Cross) Barnet town centre 1.9 mile.

Open plan sitting/dining room
Kitchen/breakfast room | 2 Bedrooms
Bathroom | En suite shower | Outside space | 2 Parking spaces | Communal gardens | EPC Rating B

The property

A beautiful ground floor apartment set behind an electric gated entrance. The entrance hall is welcoming, light and airy and leads to the wonderful 25ft. reception/dining room with wooden flooring and rear aspect window to enjoy the views of the communal garden lawn, mature trees and shrubs. The kitchen breakfast room is spacious and offers excellent wall and base unit storage with integrated fridge/freezer and dishwasher, fitted microwave, grill with oven and hob with an overhead extractor. The kitchen also benefits

the rear aspect view. The two double bedrooms offer versatility, with a choice of either the front bedroom with an en suite shower and range of fitted wardrobes or the bedroom to the rear with a range of fitted wardrobes and use of the bathroom. The property has a lovely flow and has been very well maintained by the current owners.

Outside

The apartment building is accessed via electronic security gates, while the apartment has two allocated parking spaces. The building is set in pleasant communal landscaped gardens.

Location

The property is located just over a half a mile from Cockfosters and around two miles from Barnet town centre. Cockfosters has a small town centre, with several shops, restaurants and everyday amenities, while Barnet has The Spires shopping centre and High Street, with a Waitrose, salons and coffee shops. There are plenty of good schools in the area, with the outstanding Trent Primary, Hadley Wood Primary and Southgate secondary all nearby. Cockfosters underground station, on the Piccadilly Line, is just over half a mile away, while New Barnet mainline station is just under two miles away.







Directions

Exit the M25 at junction 24, third exit at the roundabout onto Stag Hill. After two miles the entrance to Buckley Court is on your right.

General

Local Authority: London Borough of Enfield

Services: Electricity, gas, mains water, mains drainage

Service Charge: £5,300pa inclusive of £1,000 sinking fund

Council Tax: Band G

Tenure: Share of Freehold

Price: £825,000

Sopers House

Sopers House, Sopers Road, Cuffley EN6 4RY

01707 524206

Cuffley@struttandparker.com
struttandparker.com

[@struttandparker](#)

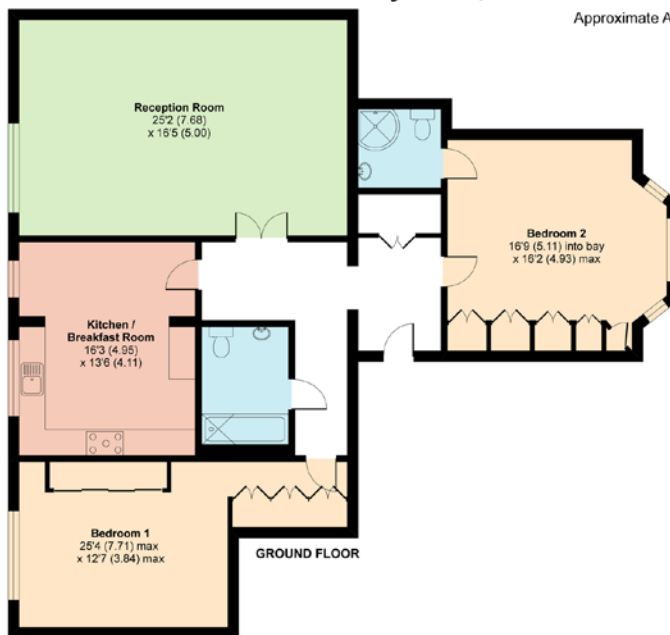
[f/struttandparker](#)

Over 45 offices across England and Scotland, including Prime Central London

Buckley Court, Cockfosters Road, Barnet, EN4

Approximate Area = 1493 sq ft / 138.6 sq m

For identification only - Not to scale



Floor plan produced in accordance with RICS Property Measurement Standards incorporating International Property Measurement Standards (IPMS2 Residential). © richiecom 2020. Produced for Strutt & Parker. REF: 852387

IMPORTANT NOTICE: Strutt & Parker gives notice that: 1. These particulars do not constitute an offer or contract or part thereof. 2. All descriptions, photographs and plans are for guidance only and should not be relied upon as statements or representations of fact. All measurements are approximate and not necessarily to scale. Any prospective purchaser must satisfy themselves of the correctness of the information within the particulars by inspection or otherwise. 3. Strutt & Parker does not have any authority to give any representations or warranties whatsoever in relation to this property (including but not limited to planning/building regulations), nor can it enter into any contract on behalf of the Vendor. 4. Strutt & Parker does not accept responsibility for any expenses incurred by prospective purchasers in inspecting properties which have been sold, let or withdrawn. 5. We are able to refer you to SPF Private Clients Limited ("SPF") for mortgage broking services, and to Alexander James Interiors ("AJI"), an interior design service. Should you decide to use the services of SPF, we will receive a referral fee from them of 25% of the aggregate of the fee paid to them by you for the arrangement of a mortgage and any fee received by them from the product provider. Should you decide to use the services of AJI, we will receive a referral fee of 10% of the net income received by AJI for the services they provide to you. 6. If there is anything of particular importance to you, please contact this office and Strutt & Parker will try to have the information checked for you. Photographs taken 2020 Particulars prepared June 2021. Strutt & Parker is a trading style of BNP Paribas Real Estate Advisory & Property Management UK Limited.

