



Ground Floor Maisonette, Campden Grove, Kensington, W8

For the finer things in property.

**STRUTT
& PARKER**

BNP PARIBAS GROUP

Ground Floor Maisonette Campden Grove, Kensington, W8

An impressive ground floor two bedroom maisonette with its own street entrance, occupying approximately 1,629 sq ft, with a wonderful reception room as well as a west-facing garden.

Campden Grove is situated off Kensington Church Street and therefore benefits from the excellent shopping and transport facilities of Kensington High Street and Notting Hill Gate. The open spaces of Kensington Gardens and Holland Park are also nearby.

Own street entrance | Entrance hall | Reception room | Kitchen | Dining room | Principal bedroom with en suite bathroom | Further bedroom with en suite bathroom | Cloakroom | Utility room | Vaults | West-facing garden | EPC Rating D

Terms

Tenure: Leasehold, 190 years from 25th March 1989. Therefore 156 years remaining.

Service Charge: 40% of outgoings

Ground Rent: Peppercorn

Council Tax: Band G

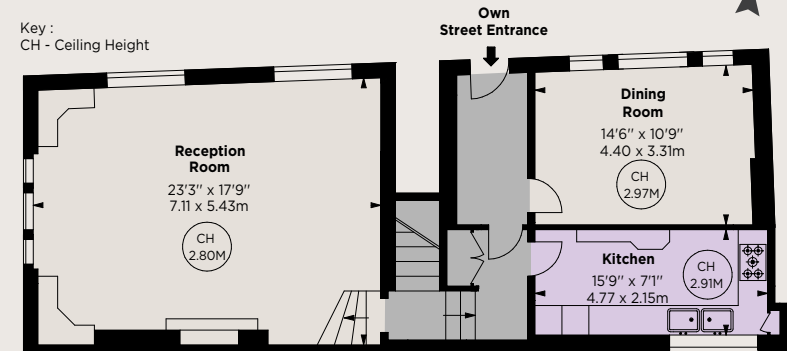
Local Authority: The Royal Borough of Kensington and Chelsea

Asking Price: £1,950,000

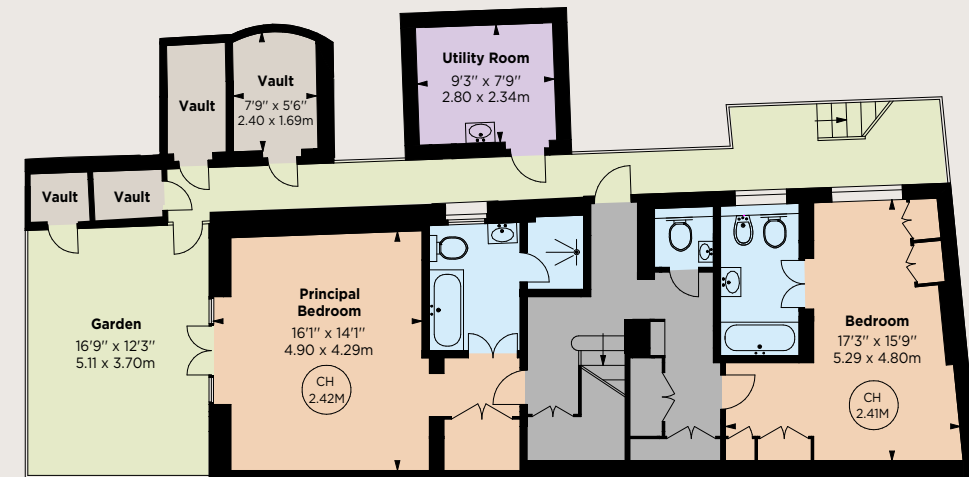


Approx. Gross Internal Area 1,629 sq ft (151.33 sq m)
Vaults & Utility Room 182 sq ft (16.91 sq m)
Total Area 1,811 sq ft (168.24 sq m)

Key :
CH - Ceiling Height



Raised Ground Floor



Lower Ground Floor

Kensington

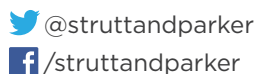
103 Kensington Church Street, London W8 7LN

020 7938 3666

kensington@struttandparker.com

IMPORTANT NOTICE

Strutt & Parker gives notice that: 1. These particulars do not constitute an offer or contract or part thereof. 2. All descriptions, photographs and plans are for guidance only and should not be relied upon as statements or representations of fact. All measurements are approximate and not necessarily to scale. Any prospective purchaser must satisfy themselves of the correctness of the information within the particulars by inspection or otherwise. 3. Strutt & Parker does not have any authority to give any representations or warranties whatsoever in relation to this property (including but not limited to planning/building regulations), nor can it enter into any contract on behalf of the Vendor. 4. Strutt & Parker does not accept responsibility for any expenses incurred by prospective purchasers in inspecting properties which have been sold, let or withdrawn. 5. We are able to refer you to SPF Private Clients Limited ("SPF") for mortgage broking services, and to Alexander James Interiors ("AJI"), an interior design service. Should you decide to use the services of SPF, we will receive a referral fee from them of 25% of the aggregate of the fee paid to them by you for the arrangement of a mortgage and any fee received by them from the product provider. Should you decide to use the services of AJI, we will receive a referral fee of 10% of the net income received by AJI for the services they provide to you. 6. If there is anything of particular importance to you, please contact this office and Strutt & Parker will try to have the information checked for you. Photographs taken June 2023. Particulars prepared June 2023. Strutt & Parker is a trading style of BNP Paribas Real Estate Advisory & Property Management UK Limited.



Over 45 offices across England and Scotland,
including Prime Central London

For the finer things in property.

