

Campden Hill Court, Kensington



Strutt
& Parker

Land and property. Since 1885.

A beautiful three-bedroom 2nd floor lateral apartment (with lift) ideally located in this portered apartment in Kensington.

This beautiful apartment is particularly quiet and has charming views. There are three bedrooms, three en suite bathrooms, and this second-floor lateral apartment offers a generous reception room with views over the communal gardens, there is a separate kitchen/dining room and an additional guest cloakroom. The apartment has three generously sized bedrooms all of which are en suites and have ample storage. There is a lift in the building and the building further benefits from a 24 hour porter and beautiful communal gardens.



Location

Located in one of Kensington's most popular mansion buildings, the property is situated within striking distance of Holland Park, Kensington High Street and Notting Hill Gate.

Postcode region: W8

General

Tenure: Share of Freehold, 999 years from 25 March 1984

Local Authority: Royal Borough of Kensington and Chelsea

Council Tax: Band G

EPC Rating: C

Service Charge: £13,627.26 per annum

Parking: Parking permit for The Royal Borough of Kensington and Chelsea

Mobile coverage and broadband: Information can be found here: <https://checker.ofcom.org.uk/en-gb/mobile-coverage>

1,736 sq ft (161.3 sq m)

Reception room

3 bathrooms

3 bedrooms

Concierge/Porter

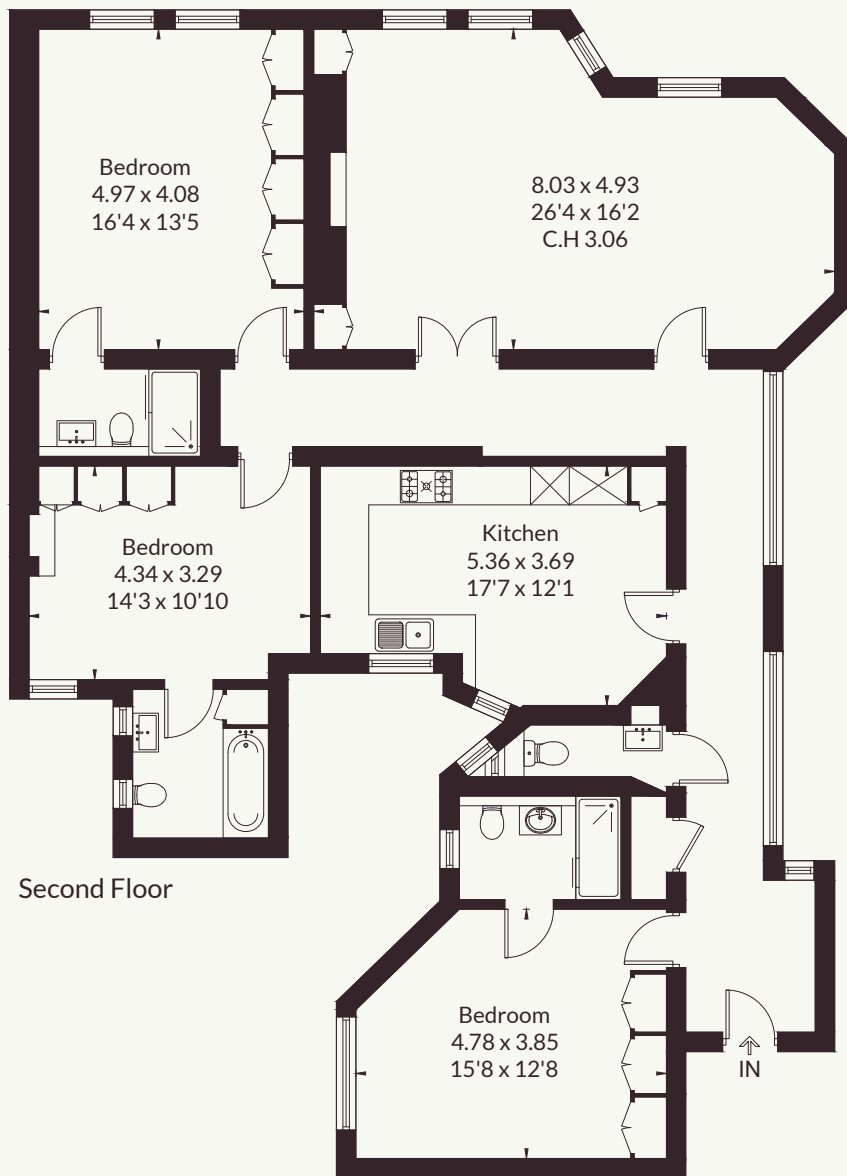
Lift

Share of Freehold

Guide price £2,695,000



Approximate Floor Area = 161.3 sq m / 1736 sq ft



Drawn for illustration and identification purposes only by @fourwalls-group.com #109199

Strutt & Parker Kensington

103 Kensington Church Street, London W8 7LN
020 7938 3666 | kensington@struttandparker.com



@struttandparker struttandparker.com

IMPORTANT NOTICE: Strutt & Parker gives notice that: 1. These particulars do not constitute an offer or contract or part thereof. 2. All descriptions, photographs and plans are for guidance only and should not be relied upon as statements or representations of fact. All measurements are approximate and not necessarily to scale. Any prospective purchaser must satisfy themselves of the correctness of the information within the particulars by inspection or otherwise. 3. Strutt & Parker does not have any authority to give any representations or warranties whatsoever in relation to this property (including but not limited to planning/building regulations), nor can it enter into any contract on behalf of the Vendor. 4. Strutt & Parker does not accept responsibility for any expenses incurred by prospective purchasers in inspecting properties which have been sold, let or withdrawn. 5. We are able to refer you to SPF Private Clients Limited ("SPF") for mortgage broking services, and to Alexander James Interiors ("AJI"), an interior design service. Should you decide to use the services of SPF, we will receive a referral fee from them of 25% of the aggregate of the fee paid to them by you for the arrangement of a mortgage and any fee received by them from the product provider. Should you decide to use the services of AJI, we will receive a referral fee of 10% of the net income received by AJI for the services they provide to you. 6. If there is anything of particular importance to you, please contact this office and Strutt & Parker will try to have the information checked for you. Strutt & Parker is a trading style of BNP Paribas Real Estate Advisory & Property Management UK Limited. Photographs taken May 2026. Particulars prepared June 2026.

Strutt
& Parker

Land and property. Since 1885.