



60 Campden Hill Court, Campden Hill Road, Kensington, W8

60 Campden Hill Court, Campden Hill Road, Kensington, W8

An outstanding four bedroom flat, occupying approximately 1,555 sqft on the fifth floor (lift) of this well maintained portered mansion block. The flat benefits from having excellent entertaining space and impressive views.

Campden Hill Court is well situated between Kensington High Street and Notting Hill Gate and therefore benefits from the shopping and transport facilities of the area. The open spaces of Holland Park and Kensington Gardens are nearby.

Entrance Hall | Living Room/Dining Room
Kitchen | Four Bedrooms | One ensuite
Bathroom | Two ensuite shower rooms | EPC
rating E

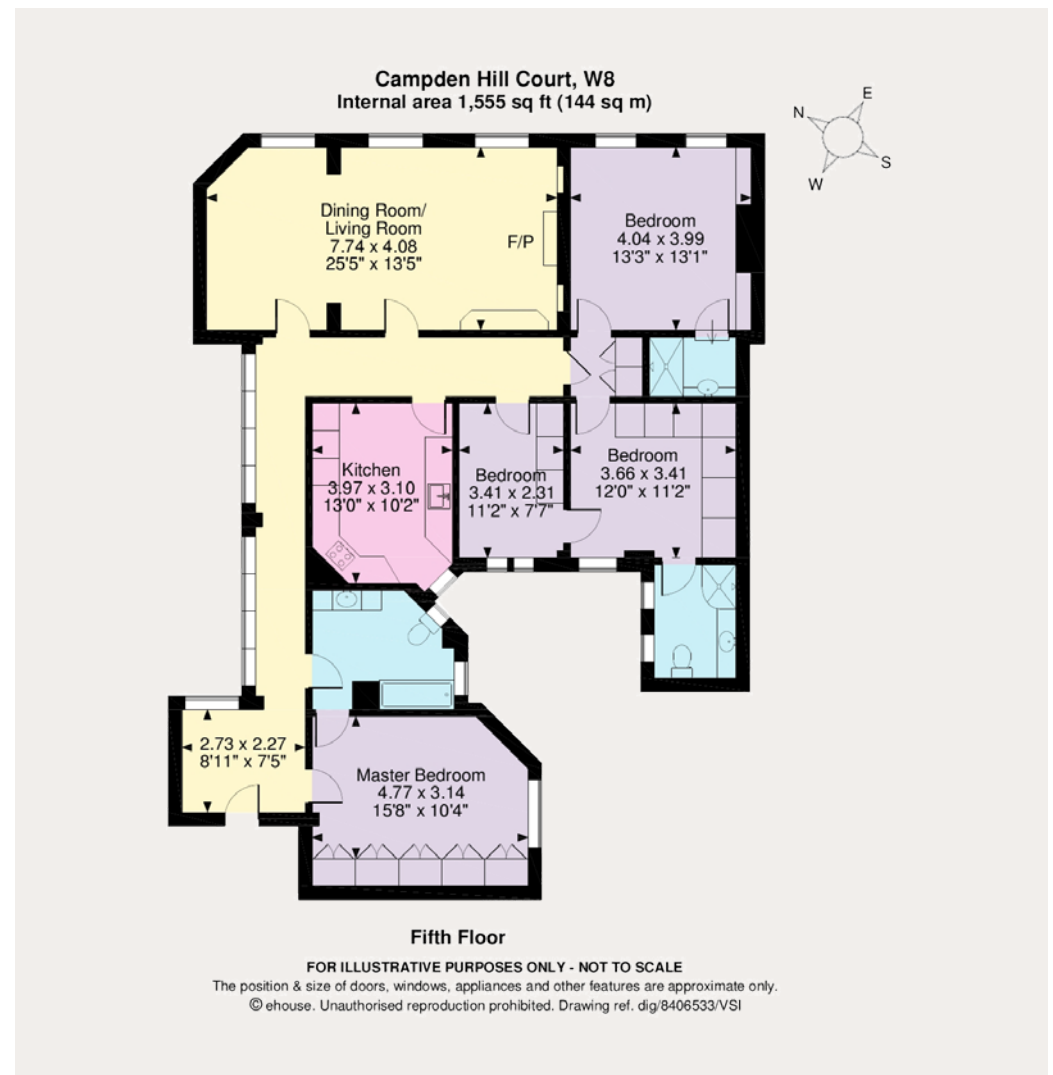
Terms

Tenure: Leasehold. 999 years from 25 March 1984 plus a **Share of the Freehold**

Service Charge: For the period 25/09/2019 to 24/03/2020 approximately £5,250 (which includes communal heating)

Local Authority: The Royal Borough of Kensington and Chelsea

Price: Upon application



Kensington

103 Kensington Church St, London W8 7LN

020 7938 3666

kensington@struttandparker.com

IMPORTANT NOTICE: Strutt & Parker gives notice that: 1. These particulars do not constitute an offer or contract or part thereof. 2. All descriptions, photographs and plans are for guidance only and should not be relied upon as statements or representations of fact. All measurements are approximate and not necessarily to scale. Any prospective purchaser must satisfy themselves of the correctness of the information within the particulars by inspection or otherwise. 3. Strutt & Parker does not have any authority to give any representations or warranties whatsoever in relation to this property (including but not limited to planning/building regulations), nor can it enter into any contract on behalf of the Vendor. 4. Strutt & Parker does not accept responsibility for any expenses incurred by prospective purchasers in inspecting properties which have been sold, let or withdrawn. 5. We are able to refer you to SPF Private Clients Limited ("SPF") for mortgage broking services, and to Alexander James Interiors ("AJI"), an interior design service. Should you decide to use the services of SPF, we will receive a referral fee from them of 25% of the aggregate of the fee paid to them by you for the arrangement of a mortgage and any fee received by them from the product provider. Should you decide to use the services of AJI, we will receive a referral fee of 10% of the net income received by AJI for the services they provide to you. 6. If there is anything of particular importance to you, please contact this office and Strutt & Parker will try to have the information checked for you. Photographs taken December 2019. Particulars December 2019. Strutt & Parker is a trading style of BNP Paribas Real Estate Advisory & Property Management UK Limited.