



Castle Gates House, Shrewsbury, Shropshire

For the finer things in property.

**STRUTT
& PARKER**

BNP PARIBAS GROUP 

Castle Gates House

Castle Gates, Shrewsbury, Shropshire, SY1 2AT

An imposing and iconic Grade II* listed Elizabethan mansion set within 1.14 acres of enchanting gardens designed by Percy Thrower within the coveted “loop” of the River Severn

Shrewsbury railway station 0.1 miles, M54 (junction 7) 10 miles, Oswestry 18 miles, Chester 43 miles, Birmingham 47 miles

Drawing room | Dining room | Library | Kitchen/dining/family room | 6 Bedrooms | 3 Bathrooms
Guest cloakroom | Utility/boot room | Workshop
Cellar | Roof terrace | 1.13 acres of gardens and grounds | Off-street parking

The property

Referenced by Pevsner, Castle Gates House is a superb late C16th timber framed residence occupying a prominent and iconic position at the gateway to Shrewsbury's Norman castle. Originally built on nearby Dogpole, Sir Francis Newport, 1st Earl of Bradford, dismantled the property and moved to its present location in 1702, making way for the Guildhall. It is understood that the house underwent a major restoration in 1902 before it was purchased by the Horticultural Society in 1924, who subsequently bestowed it to the town.

This exceptional property has been sensitively restored under the current ownership, serving as a much-cherished family home for over twenty years. The property has had many interesting incarnations over its history, including use as a

doctor's surgery. The future could offer either residential or commercial opportunities, subject to the relevant planning consents.

Castle Gates House is an atmospheric, extensive and sophisticated Grade II* listed mansion house has been sympathetically renovated with careful consideration coupled with the use of high quality natural materials to preserve and enhance the abundance of period features. These including exposed timber beams and flooring, leaded light windows, ornate moulded cornices and original fireplaces.

The house lends itself to both comfortable everyday living and larger scale entertaining and the recent addition of a striking timber and glass extension has created a “heart” of the living space. The accommodation is orientated to maximise views of the splendid and substantial gardens designed by the celebrated British Horticulturalist Percy Thrower and provides a true sense of a ‘country house in town’.

Castle Gates House is an exceptional jewel in Shrewsbury's architectural crown.





An impressive studded oak front door opens under a carved Gothic arch into the spacious L shaped reception hallway off which radiate two formal reception rooms; a library to the front and distinguished dining room overlooking the gardens at the rear. Designed under the supervision of notable architectural practise Arrol the exquisite 38ft kitchen, dining and family room with an inspired triple-sided stone fireplace at its centre and two sets of bi-fold doors onto the terrace offers contemporary family living. A comprehensive utility/boot room and a cloakroom complete the ground floor accommodation.

Documented by the renowned architectural historian Pevsner an early C17th staircase with ornate carved balusters and moulded rail winds rises to the upper two floors. Located on the first floor are the beautifully proportioned double aspect drawing room and principal bedroom suite with two dressing rooms and doors to a balcony. There are two further bedrooms, two bathrooms and a WC to this floor.

The second floor lends itself for teenager, guest or nanny accommodation with three bedrooms, one with dressing room/study, serviced by a large family bathroom.

There is a substantial cellarage divided into three primary chambers with additional storerooms.







Outside

Designed by Percy Thrower the exceptional sunken gardens at Castle Gates House are a noteworthy feature of the property and comprise of 1.13 acres of secluded and tranquil grounds. From the substantial slate terrace offering al fresco dining, steps lead down to the formal garden where a gravelled pathway sweeps around an expanse of lawn past mature specimen trees and fully stocked borders with herbaceous flowering perennials. Within the grounds are an assortment of horticultural “rooms” offering spectacular variety and seasonal interest including a charming parterre, productive vegetable patch, orchard, ornamental pond and cutting garden.

Leading from the utility/boot room is an external service door to a Georgian loggia. This links to an extensive workshop within the former stable block, with stairs rising to a large storage room over.

There is secure parking for several vehicles at either side of the property with potential to install an electric car charging point in front of the workshop.

Direction

By car, follow postal code to SY1 2AT. Note the one-way system through the town centre.

By foot, from the agents' office, continue up Pride Hill and along Castle Street until reaching the entrance to the Castle, with the property located on the right.

What3words: admits.guard.gift





Location

Castle Gates House occupies an enviable position within the much-coveted "Loop" of the River Sever, overlooking Shrewsbury's Grade I listed Library. The house offers the best of both worlds, being on the doorstep of an excellent array of amenities yet with the tranquillity offered within the grounds and views towards the Shrewsbury Castle. While the bespoke shops, restaurants and other amenities are all nearby, the house enjoys nearby access to the quiet walks along the riverbank to both the Weir and Quarry Park.

Shrewsbury mainline station is less than 200 meters away, offering direct services to Birmingham New Street (57 minutes) and London (2hr 59). The A5 is within easy reach, providing access to the M54 and the M6.

The area is second-to-none when it comes to schooling in both the state and private sector, with a strong selection of nearby independent schools including St Winifred's Convent, Prestfeld Preparatory, Shrewsbury High School and Shrewsbury School.

General

Local Authority: Shropshire Council

Services: Mains gas, electric, water and drainage

Council Tax: Band G

Fixtures and Fittings: Only those items known as fixtures and fittings will be included in the sale. Certain items such as garden ornaments, carpets and curtains may be available by separate negotiation.

Wayleaves, rights of way and easements: The property will be sold subject to and with the benefit of all wayleaves, easements and rights of way, whether mentioned in these particulars or not.

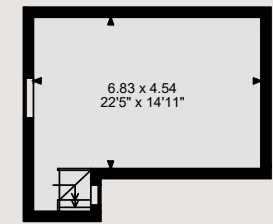
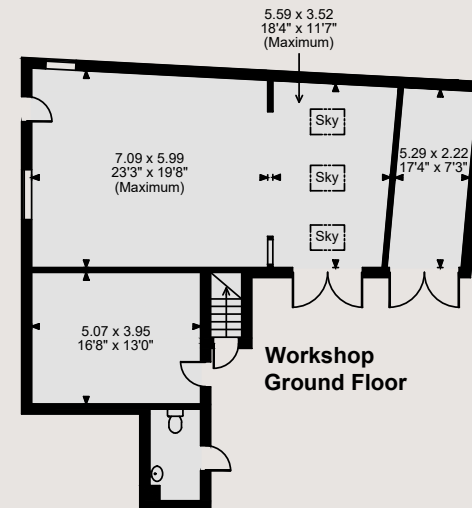
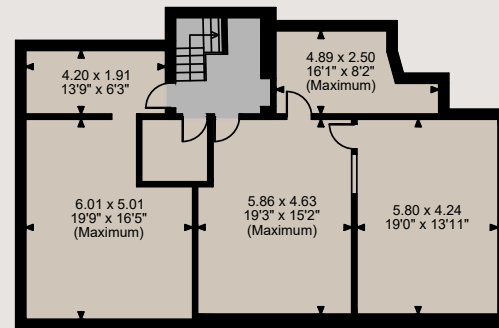
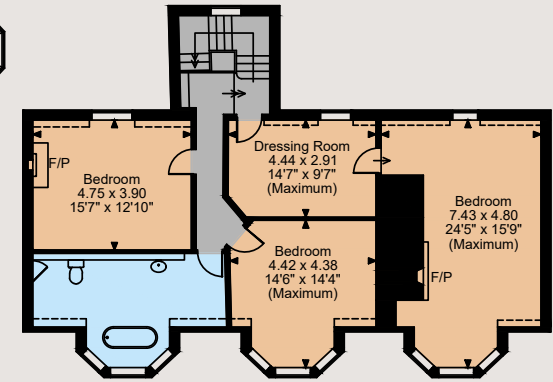
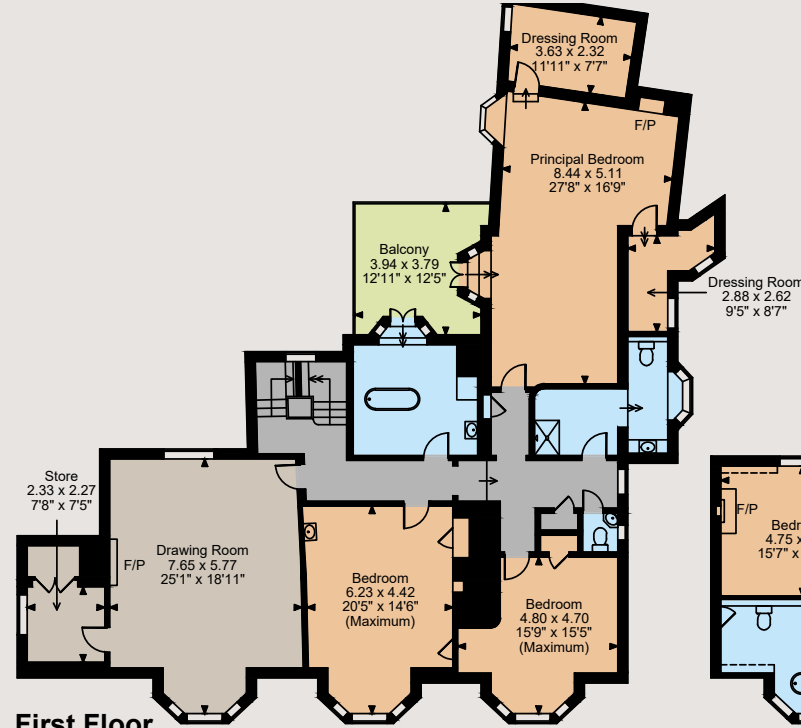
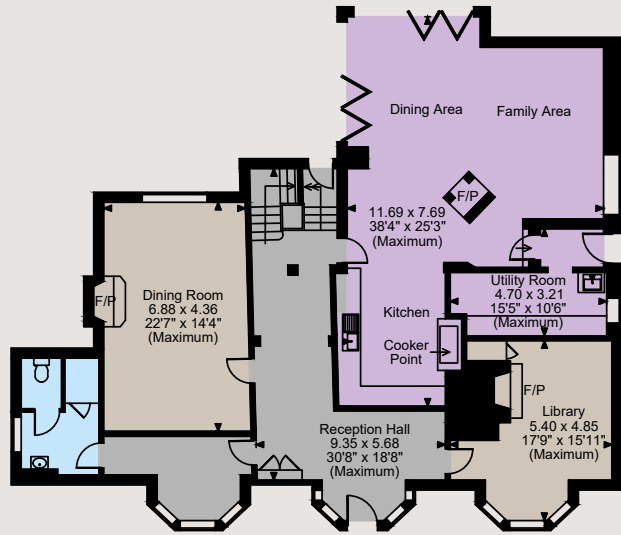
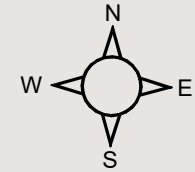
Tenure: Freehold

Listing: Property is GII* listed

Guide Price: £2,250,000



Castle Gates House, Castle Gates, Shrewsbury
 Main House internal area 6,541 sq ft (608 sq m)
 Workshop internal area 1,444 sq ft (134 sq m)
 Balcony external area = 141 sq ft (13 sq m)
 Total internal area 7,985 sq ft (742 sq m)



The position & size of doors, windows, appliances and other features are approximate only.

□□□□ Denotes restricted head height

© ehous. Unauthorised reproduction prohibited. Drawing ref. dig/8562193/GSM