

Cathcart Road,  
Chelsea



Strutt  
& Parker

Land and property. Since 1885.

An exceptional home combining elegant style, excellent space and an enviable setting. Well positioned on an excellent corner plot where Cathcart Road and Hollywood Road meet, this beautifully restored two-bedroom, two-bathroom home is presented in immaculate condition benefitting from a private entrance and charming feature garden.

The property is approached via a short flight of steps leading down through a charming, feature front garden, perfect for alfresco dining, creating an inviting and characterful entrance. Upon entry, there is a marvellous open-plan kitchen reception/dining area, perfectly designed for both relaxed living and entertaining. The accommodation further comprises two well-proportioned bedrooms, including an impressive principal suite with an en-suite bathroom, as well as a beautifully appointed family bathroom. There is a further patio garden, peacefully tucked away at the rear. The layout flows effortlessly combining practicality with a sense of space and understated elegance throughout.



**Location**

Cathcart Road is conveniently located close to the Hollywood Road, within 'The Beach' section of west Chelsea, known for its vibrant selection of cafes, restaurants and local amenities. Local transport links include Earl's Court (District & Piccadilly Lines), West Brompton (London Overground & National Rail) and Fulham Broadway (District Line) stations.

Postcode region: SW10

**General**

Local Authority: Royal borough of Kensington and Chelsea  
 Council Tax: Band D  
 EPC Rating: D  
 Service Charge: £5,000 per annum  
 Parking: Parking permit  
 Mobile coverage and broadband: Information can be found here: <https://checker.ofcom.org.uk/en-gb/mobile-coverage>



**869 sq ft (80.80 sq m)**  
**Double aspect position**  
**Interior designed**  
**Open-plan reception/dining**  
**Garden | Patio**  
**Sole access to storage vault**  
**Share of freehold**

**Guide price £1,285,000**

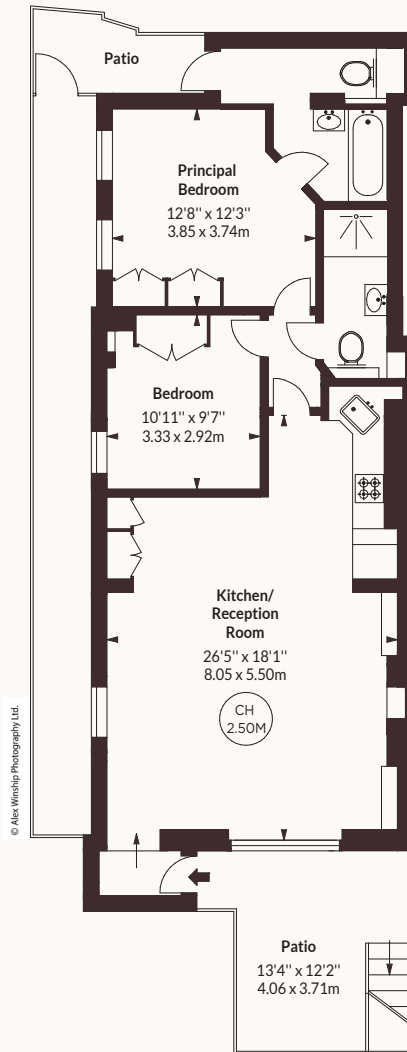
## Cathcart Road, SW10

APPROX. GROSS INTERNAL AREA \*  
869 Sq Ft - 80.80 Sq M

This floorplan is for GUIDANCE ONLY and NOT FOR VALUATION purposes.



Key :  
CH - Ceiling Height



LOWER GROUND FLOOR

## Strutt & Parker Chelsea

140 Fulham Road, London, SW10 9PY

020 7373 1010 | [chelseaSW10@struttandparker.com](mailto:chelseaSW10@struttandparker.com)



@struttandparker

[struttandparker.com](http://struttandparker.com)

IMPORTANT NOTICE: Strutt & Parker gives notice that: 1. These particulars do not constitute an offer or contract or part thereof. 2. All descriptions, photographs and plans are for guidance only and should not be relied upon as statements or representations of fact. All measurements are approximate and not necessarily to scale. Any prospective purchaser must satisfy themselves of the correctness of the information within the particulars by inspection or otherwise. 3. Strutt & Parker does not have any authority to give any representations or warranties whatsoever in relation to this property (including but not limited to planning/building regulations), nor can it enter into any contract on behalf of the Vendor. 4. Strutt & Parker does not accept responsibility for any expenses incurred by prospective purchasers in inspecting properties which have been sold, let or withdrawn. 5. We are able to refer you to SPF Private Clients Limited ("SPF") for mortgage broking services, and to Alexander James Interiors ("AJI"), an interior design service. Should you decide to use the services of SPF, we will receive a referral fee from them of 25% of the aggregate of the fee paid to them by you for the arrangement of a mortgage and any fee received by them from the product provider. Should you decide to use the services of AJI, we will receive a referral fee of 10% of the net income received by AJI for the services they provide to you. 6. If there is anything of particular importance to you, please contact this office and Strutt & Parker will try to have the information checked for you. Strutt & Parker is a trading style of BNP Paribas Real Estate Advisory & Property Management UK Limited. Photographs taken April 2026. Particulars prepared March 2026.

# Strutt & Parker

Land and property. Since 1885.