

The Old Chapel, Little Tew
Oxfordshire



Strutt
& Parker

Land and property. Since 1885.

Charming converted Chapel with generous light rooms in this most sought-after village

The property

The Old Chapel is a pretty period house, constructed of local stone under a blue slate roof, dating from 1871 with an interesting stepped gable facade and Gothic style perpendicular windows. The property was converted from the Baptist Chapel and Hall into a family home some years ago and now offers delightful and spacious accommodation with large light rooms. Whilst located within the village Conservation Area, the house is not listed.

Location

Little Tew is one of the most sought-after villages in the very pretty rolling, mature landscape of North Oxfordshire, the 'gateway' to the Cotswolds. Its larger neighbour, Great Tew, within striking distance, has the popular café Quince and Clover, the Falkland Arms and a busy community centre - the Tew Centre - which is also home to the Great and Little Tew Cricket Club. Great Tew is also home to Soho Farmhouse members club. The area has many popular draws including Daylesford Farm Shop, Estelle Manor and Restoration Hardware, which are all nearby. The local town of Chipping Norton provides a wide range of services including an M & S food hall. Great Tew Primary School is extremely popular; the area is renowned for schools, with Kitebrook, Tudor Hall, Bloxham and Winchester House all being popular local choices. The Oxford and Abingdon schools are within easy reach. The nearest railway station is Charlbury, with a regular service to London Paddington. Bicester and Banbury stations provide services to Marylebone. The area is good for walking with many beautiful public footpaths and bridleways.



Outside

The house is tucked away just off the village road, approached via double gates providing additional off street parking, the garden is enclosed by mature hedgerow and mainly laid to lawn.

Postcode region: OX7

Great Tew 1 mile, Soho Farmhouse 2 miles, Chipping Norton 5 miles, Charlbury Station 7.3 miles, Woodstock 10 miles, Oxford 18 miles
Banbury to London Marylebone from about 64 minutes.
Charlbury to London Paddington from about 71 minutes.

General

Local Authority: West Oxfordshire District Council

Services: Mains electricity and water. Oil fired central heating and shared private drainage.
We understand the septic tank was installed in 2015 and is located in the neighbouring property.

Fixtures and Fittings: Only those items known as fixtures and fittings will be included in the sale. Certain items may be available by separate negotiations.

Wayleaves and easements: The property is sold subject to any wayleaves or easements, whether mentioned in these particulars or not.

Council Tax: Band E

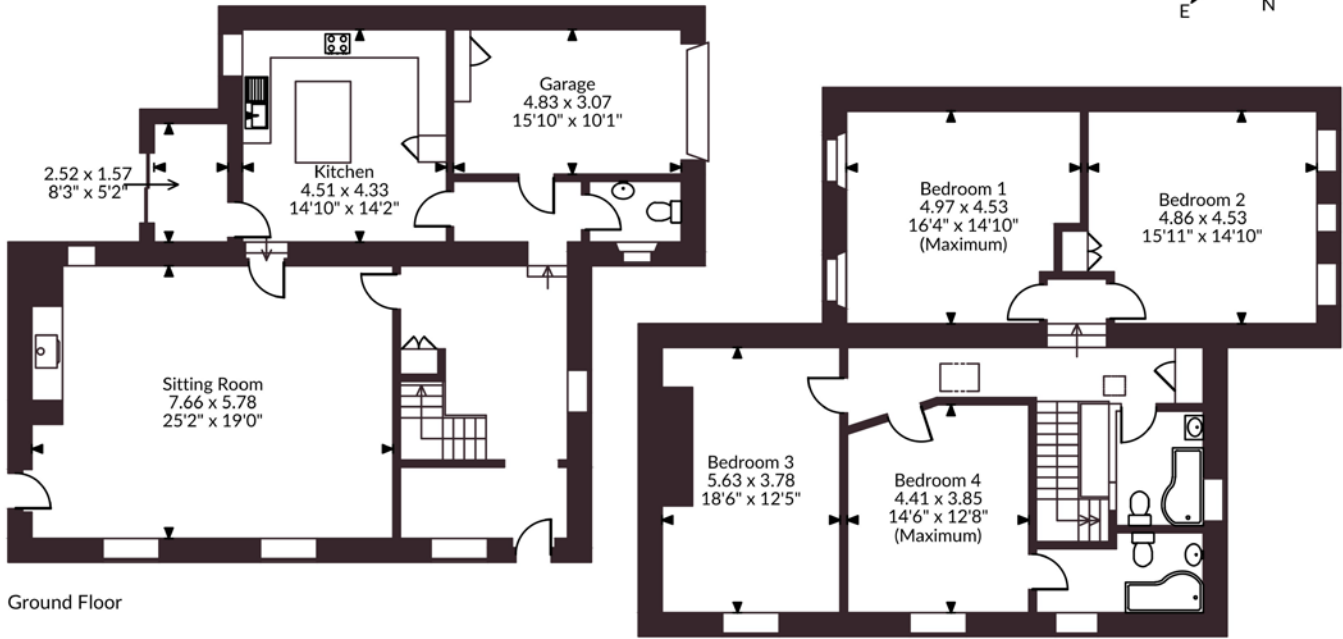
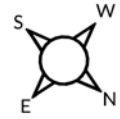
EPC Rating:F
Mobile and Broadband checker: Information can be found here <https://checker.ofcom.org.uk/en-gb/>

2,453 sq ft (228 sq m)
Impressive reception hall
Large living room
4 double bedrooms
2 bathrooms (one ensuite)
Garage, off street parking and garden
Freehold

Excess £1,000,000



The Old Chapel, Chapel Lane, Little Tew
 Main House internal area 2,293 sq ft (213 sq m)
 Garage internal area 160 sq ft (15 sq m)
 Total internal area 2,453 sq ft (228 sq m)



FOR ILLUSTRATIVE PURPOSES ONLY - NOT TO SCALE

The position & size of doors, windows, appliances and other features are approximate only.
 © ehouse. Unauthorised reproduction prohibited. Drawing ref. dig/8689714/CNR

Oxford

201-203 Banbury Rd, Oxford OX2 7AR
 01865 366660 | oxford@struttandparker.com



@struttandparker struttandparker.com

**Strutt
& Parker**

Land and property. Since 1885.

IMPORTANT NOTICE: Strutt & Parker gives notice that: 1. These particulars do not constitute an offer or contract or part thereof. 2. All descriptions, photographs and plans are for guidance only and should not be relied upon as statements or representations of fact. All measurements are approximate and not necessarily to scale. Any prospective purchaser must satisfy themselves of the correctness of the information within the particulars by inspection or otherwise. 3. Strutt & Parker does not have any authority to give any representations or warranties whatsoever in relation to this property (including but not limited to planning/building regulations), nor can it enter into any contract on behalf of the Vendor. 4. Strutt & Parker does not accept responsibility for any expenses incurred by prospective purchasers in inspecting properties which have been sold, let or withdrawn. 5. We are able to refer you to SPF Private Clients Limited ("SPF") for mortgage broking services, and to Alexander James Interiors ("AJI"), an interior design service. Should you decide to use the services of SPF, we will receive a referral fee from them of 25% of the aggregate of the fee paid to them by you for the arrangement of a mortgage and any fee received by them from the product provider. Should you decide to use the services of AJI, we will receive a referral fee of 10% of the net income received by AJI for the services they provide to you. 6. If there is anything of particular importance to you, please contact this office and Strutt & Parker will try to have the information checked for you. Strutt & Parker is a trading style of BNP Paribas Real Estate Advisory & Property Management UK Limited. Photographs taken May 2026. Particulars prepared May 2026.