



Chelsea Crescent, Chelsea, SW10

For the finer things in property.

**STRUTT
& PARKER**

BNP PARIBAS GROUP

Chelsea Crescent, Chelsea, SW10

A fourth floor (lift) three bedroom flat with incredible views, large terrace, porter and parking.

3 Bedrooms | 1 Reception room | 2.5 Bathrooms
Lift | Concierge/porter | Patio | Roof terrace
Balcony | Communal gardens | Underground parking | EPC Rating B

Enjoying some of the finest possible easterly river views, perfectly framed via an amazing roof terrace, this wonderful fourth floor (lift) three-bedroom lateral flat in Chelsea Crescent benefits from a porter, lift and secure underground parking.

Chelsea Harbour stands on land that was once the 28-acre estate of Sandford Manor House. At the start of the 19th-century, it was in decline and was bought by a gas company. Part of the land was used as a Victorian-era railway coaling dock on the River Thames. Latterly it had been a coal yard for predecessor companies of British Rail.

Chelsea Harbour was designed by architects Moxley Jenner & Partners, developed by Mansford, with Bovis Homes Group serving as project management consultants in 1986. It was the biggest single construction project in the United Kingdom for decades. Notable former include Sir Michael Caine and Robbie Williams.

Chelsea Crescent enjoys on site daily porters from 07:00 to 20:00 and this flat comes with designated parking space No. 68 (with electrical plug for plug in vehicles).

Terms

Tenure: Leasehold, 178 years 2 months remaining

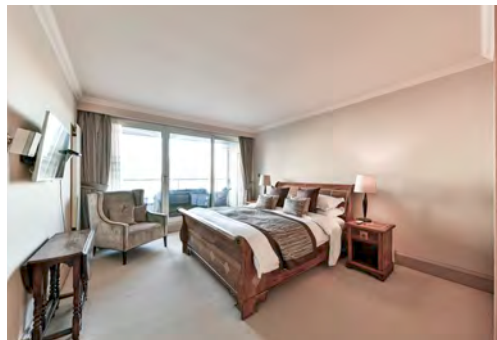
Service Charge: £7,995 for 6 months

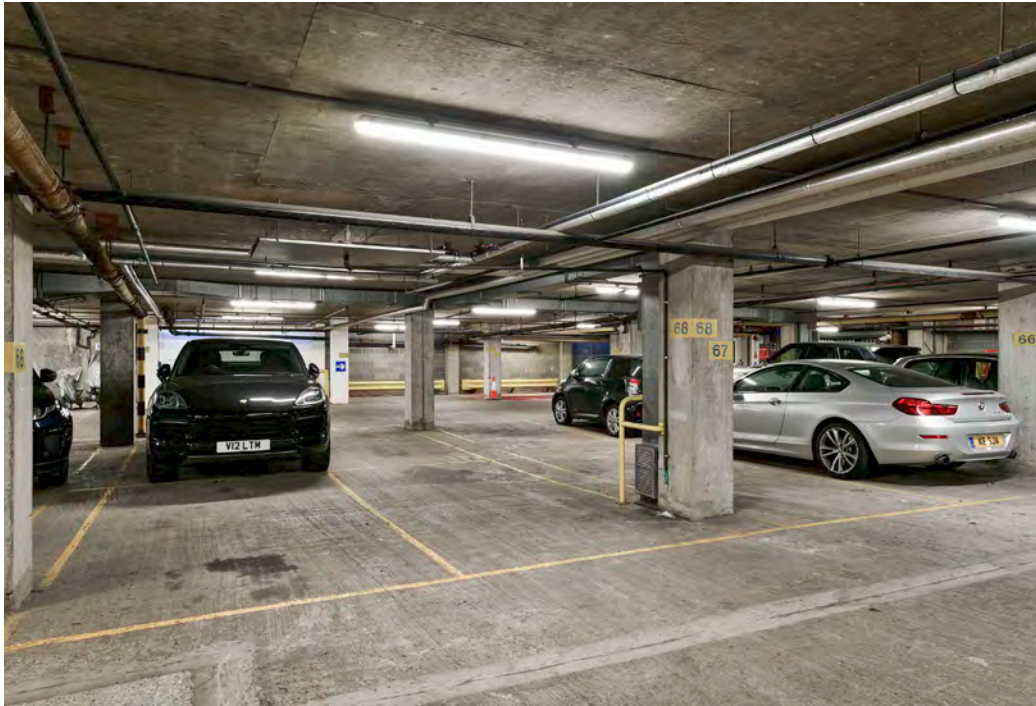
Ground Rent: NA

Council Tax: Band H

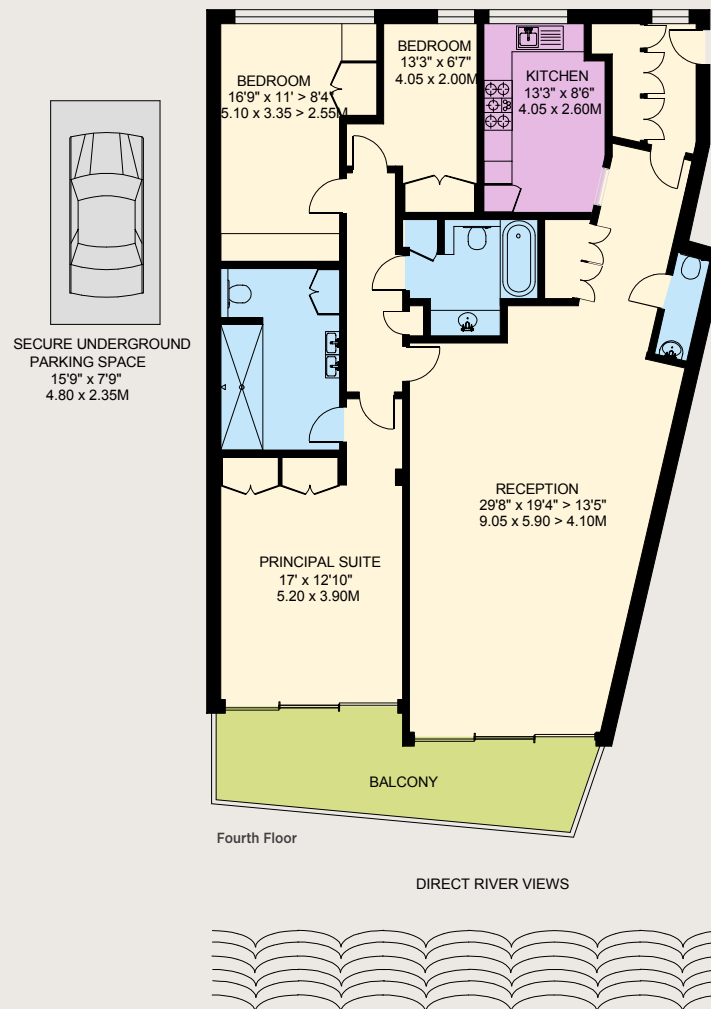
Local Authority: The Royal Borough of Kensington and Chelsea

Asking Price: £2,000,000





Gross Internal Area 1,537 sq ft (142.8 sq m) excluding parking space
For identification purposes only.



Chelsea SW10

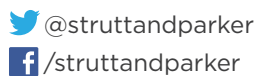
140 Fulham Road, London, SW10 9PY

020 7373 1010

chelseaSW10@struttandparker.com

IMPORTANT NOTICE

Strutt & Parker gives notice that: 1. These particulars do not constitute an offer or contract or part thereof. 2. All descriptions, photographs and plans are for guidance only and should not be relied upon as statements or representations of fact. All measurements are approximate and not necessarily to scale. Any prospective purchaser must satisfy themselves of the correctness of the information within the particulars by inspection or otherwise. 3. Strutt & Parker does not have any authority to give any representations or warranties whatsoever in relation to this property (including but not limited to planning/building regulations), nor can it enter into any contract on behalf of the Vendor. 4. Strutt & Parker does not accept responsibility for any expenses incurred by prospective purchasers in inspecting properties which have been sold, let or withdrawn. 5. We are able to refer you to SPF Private Clients Limited ("SPF") for mortgage broking services, and to Alexander James Interiors ("AJI"), an interior design service. Should you decide to use the services of SPF, we will receive a referral fee from them of 25% of the aggregate of the fee paid to them by you for the arrangement of a mortgage and any fee received by them from the product provider. Should you decide to use the services of AJI, we will receive a referral fee of 10% of the net income received by AJI for the services they provide to you. 6. If there is anything of particular importance to you, please contact this office and Strutt & Parker will try to have the information checked for you. Photographs taken January 2024. Particulars prepared January 2024. Strutt & Parker is a trading style of BNP Paribas Real Estate Advisory & Property Management UK Limited.



Over 45 offices across England and Scotland,
including Prime Central London

For the finer things in property.

