



Chelsea Embankment, Chelsea SW3



## Chelsea Embankment, Chelsea SW3

A charming, split level, two bedroom apartment situated on the raised ground floor of this highly desirable red brick building with views across the river Thames towards Battersea Park.

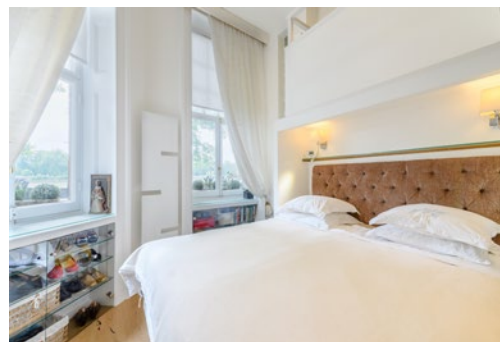
Reception room | Open plan Kitchen | Two bedrooms | Bathroom | Shower room with his and her sinks | Residents parking | EPC rating D

A stunning two-bedroom split-level apartment, with luxury fittings, in this attractive mansion house in one of Chelsea's most prestigious settings.

The apartment overlooks the River Thames, and features a welcoming reception room, with a large, floor to ceiling bay window flooding the property with plenty of natural light.

There is an open-plan kitchen area with an integrated hob and oven, while stairs lead to a mezzanine level, where you will find a generous bedroom and a bathroom with sleek contemporary styling. There is a further double bedroom to the ground floor, plus a shower room with his and hers washbasins.

Chelsea Embankment is a highly sought-after address, with direct Southerly views over the River Thames toward Battersea Park. The King's Road, with its boutique shops and restaurants, is just half a mile away while Sloane Square underground station (Circle and District lines) is less than a mile away.











## Terms

**Tenure:** Leasehold with a share of the freehold expiring 24/06/2968 so approximately 948 years.

**Service Charge:** £2,700 pa (2018)

**Ground Rent:** Peppercorn

**Local Authority:** The Royal Borough of Kensington and Chelsea

**Price:** £1,450,000 subject to contract

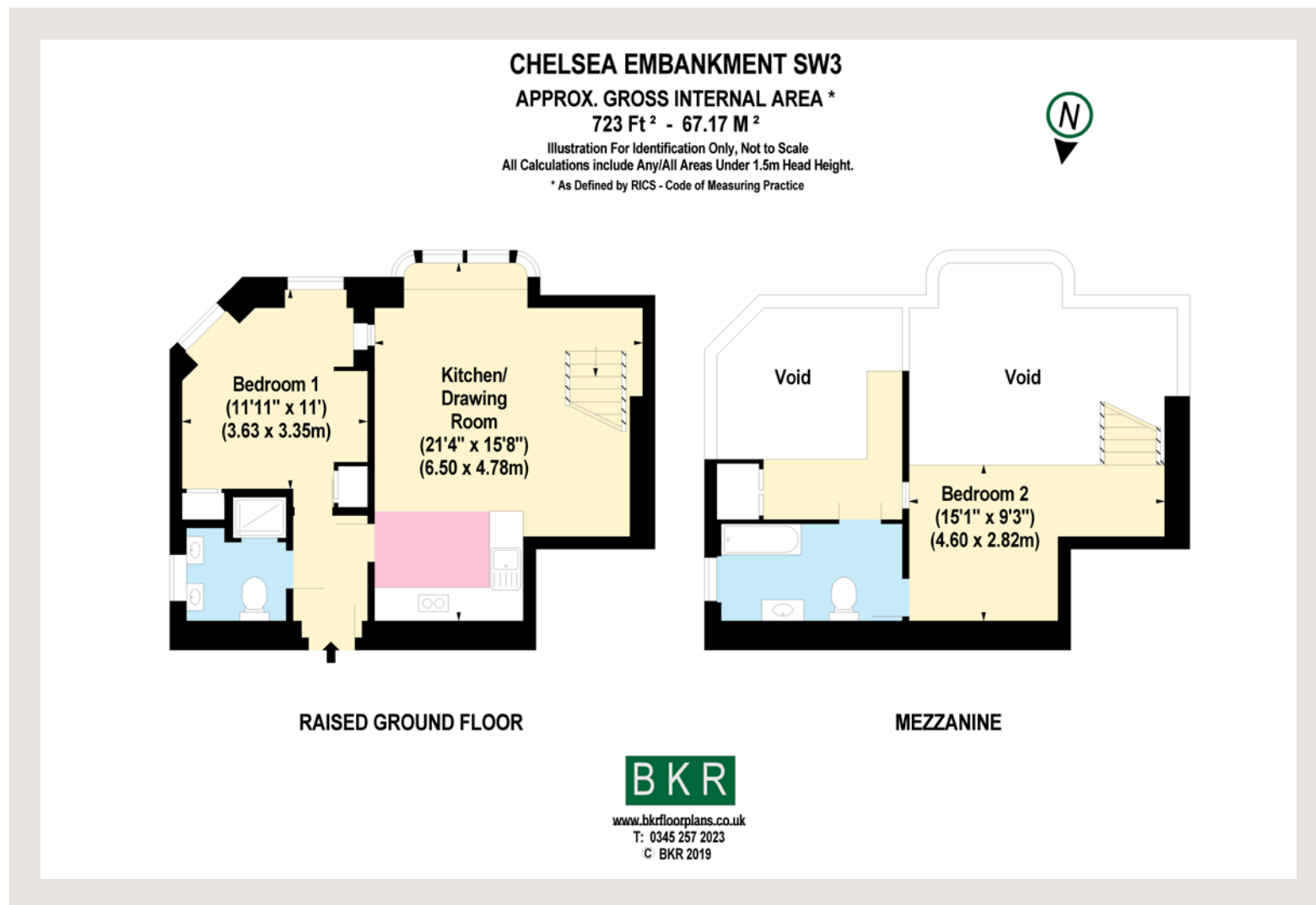
**Council Tax Band:** F

## Sloane Street

66 Sloane Street, London, SW1X 9SH

**020 7235 9959**

sloanestreet@struttandparker.com



### IMPORTANT NOTICE

Strutt & Parker gives notice that: 1. These particulars do not constitute an offer or contract or part thereof. 2. All descriptions, photographs and plans are for guidance only and should not be relied upon as statements or representations of fact. All measurements are approximate and not necessarily to scale. Any prospective purchaser must satisfy themselves of the correctness of the information within the particulars by inspection or otherwise. 3. Strutt & Parker does not have any authority to give any representations or warranties whatsoever in relation to this property (including but not limited to planning/building regulations), nor can it enter into any contract on behalf of the Vendor. 4. Strutt & Parker does not accept responsibility for any expenses incurred by prospective purchasers in inspecting properties which have been sold, let or withdrawn. 5. If there is anything of particular importance to you, please contact this office and Strutt & Parker will try to have the information checked for you. Photographs taken 11/07/019. Particulars prepared 18/07/2019 Strutt & Parker is a trading style of BNP Paribas Real Estate Advisory & Property Management UK Limited.