



Kings Court South

Chelsea, SW3

**STRUTT
& PARKER**

BNP PARIBAS GROUP

A charming and refurbished one bedroom flat with lift and porter



1 RECEPTION ROOM



1 BEDROOM



1 BATHROOM



LEASEHOLD



620 SQ FT



**GUIDE
£895,000**

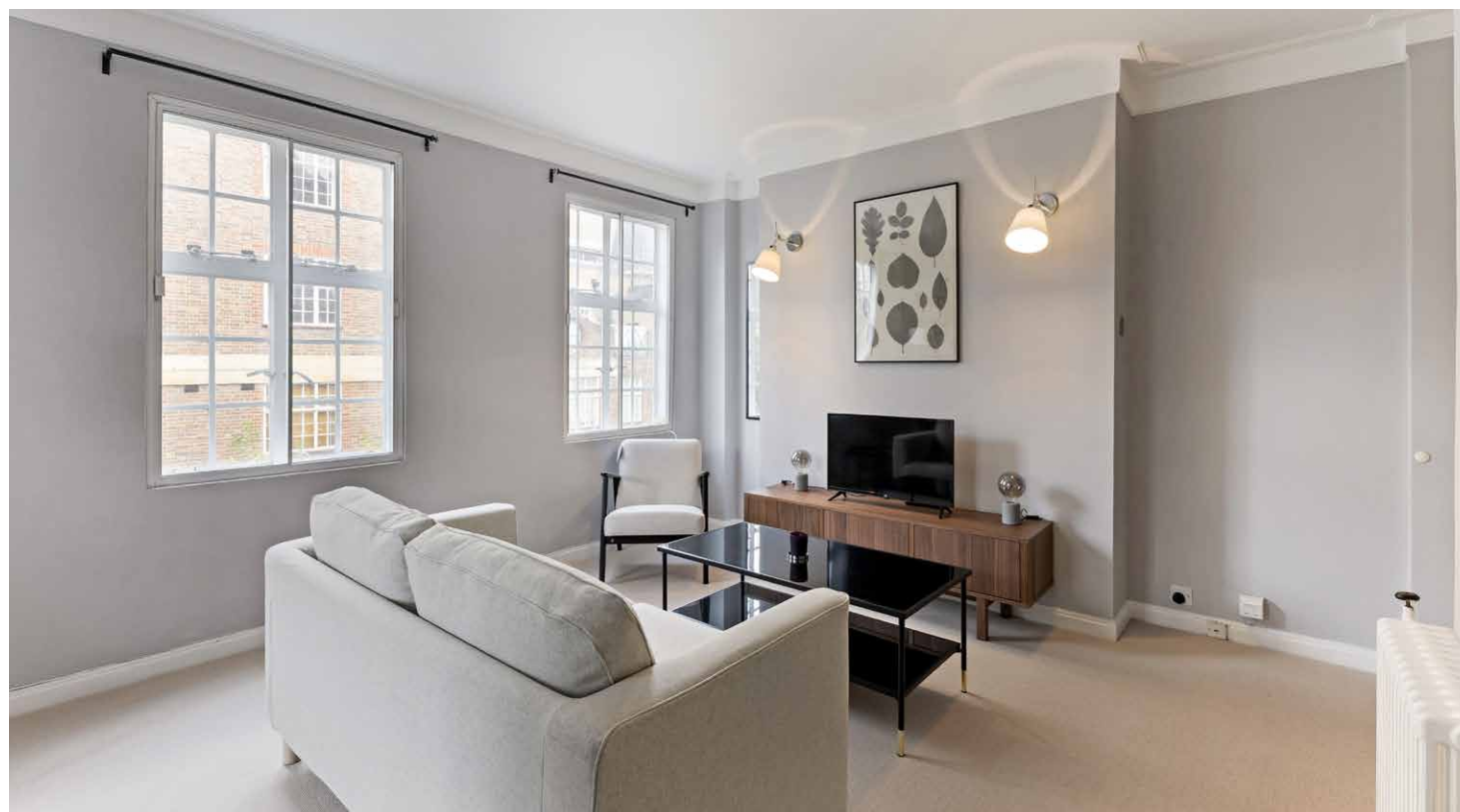


The property

An immaculately presented one bedroom flat situated on the 2nd floor (with a lift) of this charming and well run mansion block. The building benefits from a caretaker and both a private and service lift. The communal heating and hot water is included in the service charge.

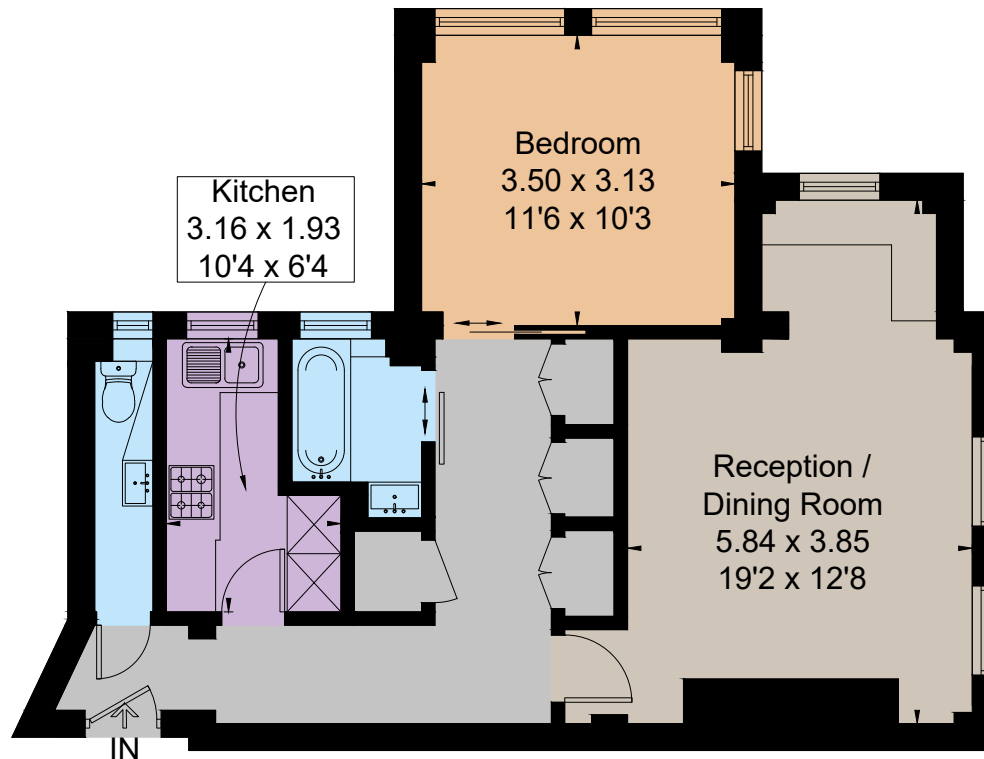
Outside

Kings Court South is quietly located on Chelsea Manor Gardens, immediately south of the King's Road, with all the boutique shops, bars and restaurants that the heart of Chelsea has to offer.





Approximate Floor Area = 57.6 sq m / 620 sq ft



Second Floor



This floor plan has been drawn in accordance with RICS Property Measurement 2nd edition.
All measurements, including the floor area, are approximate and for illustrative purposes only. @fourwalls-group.com #87574

Floorplans

Approximate Floor Area 57.6 sq m / 620 sq ft
For identification purposes only.

General

Tenure: Leasehold + share of freehold expiring 18/03/3007

Service Charge: £7700 per annum

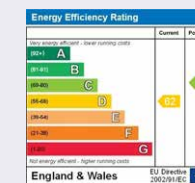
Local Authority: The Royal Borough of Kensington and Chelsea

Council Tax: Band E

EPC Rating: D

Parking: Residents parking

Broadband: Is installed



Chelsea

43 Cadogan St, London SW3 2PR

020 7225 3866

chelsea@struttandparker.com
struttandparker.com



@struttandparker

Over 50 offices across England and Scotland, including Prime Central London

For the finer things in property.

