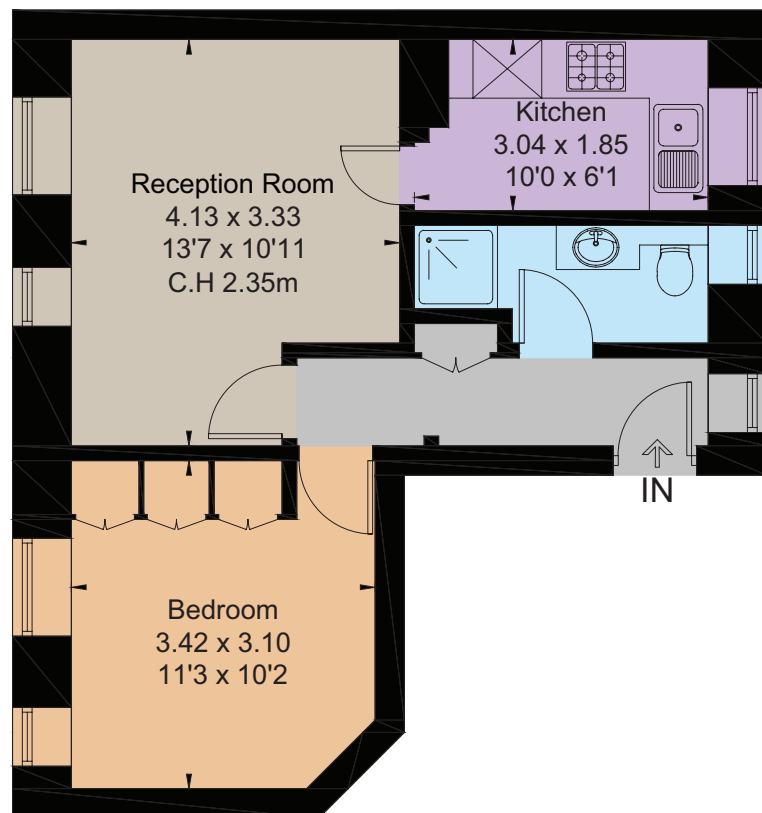




Chelsea Manor Court

Chelsea, SW3

Approximate Floor Area = 37.7 sq m / 406 sq ft



First Floor



This floor plan has been drawn in accordance with RICS Property Measurement 2nd edition.

All measurements, including the floor area, are approximate and for illustrative purposes only. @fourwalls-group.com #102352



A charming first floor, purpose-built flat, moments from the King's road.

This super and recently refurbished apartment makes for the most perfect Chelsea pied-a-terre.

Chelsea Manor Court is a small collection of low build, purpose-built flats, ideally located on Flood Street, just off the King's Road, and close to all the local shops, bars and restaurants that the vibrant area has to offer.

Floorplans

Main Flat internal area 406 sq ft (37.7 sq m)
For identification purposes only.

General

Tenure: Leasehold expiring 25/12/2108 therefore 82 years and 11 months

Local Authority: Kensington and Chelsea

Service Charge: £1,541.88 pa

Council Tax: Band C

EPC Rating: C

Parking: Resident parking

Broadband: Installed

Mobile and Broadband checker: Information can be found here <https://checker.ofcom.org.uk/en-gb/>

Guide Price: £495,000

Chelsea

43 Cadogan Street, London, SW3 2PR

02036214788

chelsea@struttandparker.com
struttandparker.com



@struttandparker

Over 50 offices across England and Scotland,
including Prime Central London

For the finer things in property.

