

Chepstow Villas, Notting Hill



Strutt & Parker

Land and property. Since 1885.

A two-bedroom, lateral first-floor apartment with south-facing balcony, being offered to the market for the first time in 30 years.

Presented in unmodernised condition, this fantastic first floor flat provides an opportunity for the incoming purchaser to put their own stamp on their new home. Situated in a semi-detached part-stucco fronted building, the flat benefits from generous proportions, with 3m ceiling height and, dual aspect light. There is a fantastic balance of living and entertaining space, with the kitchen currently leading onto a charming, south-facing balcony.



Location

Located at the quiet end of Chepstow Villas is an extremely popular address benefitting from excellent shops, restaurants and bars of the immediate area. The transport facilities of Westbourne Grove and Notting Hill Gate are moments away and the open spaces of Kensington Gardens and Holland Park are nearby.

Postcode region: W11

General

Tenure: Share of freehold
Local Authority: Royal Borough of Kensington and Chelsea
Council Tax: Band H
EPC Rating: E
Service Charge: £6,245 per annum
Parking: Residents' parking
Mobile coverage and broadband: Information can be found here: <https://checker.ofcom.org.uk/en-gb/mobile-coverage>

918 sq ft (85 sq m)
Reception room | Kitchen
2 bedrooms | 2 bathrooms
Balcony
Share of freehold

Guide price £1,400,000

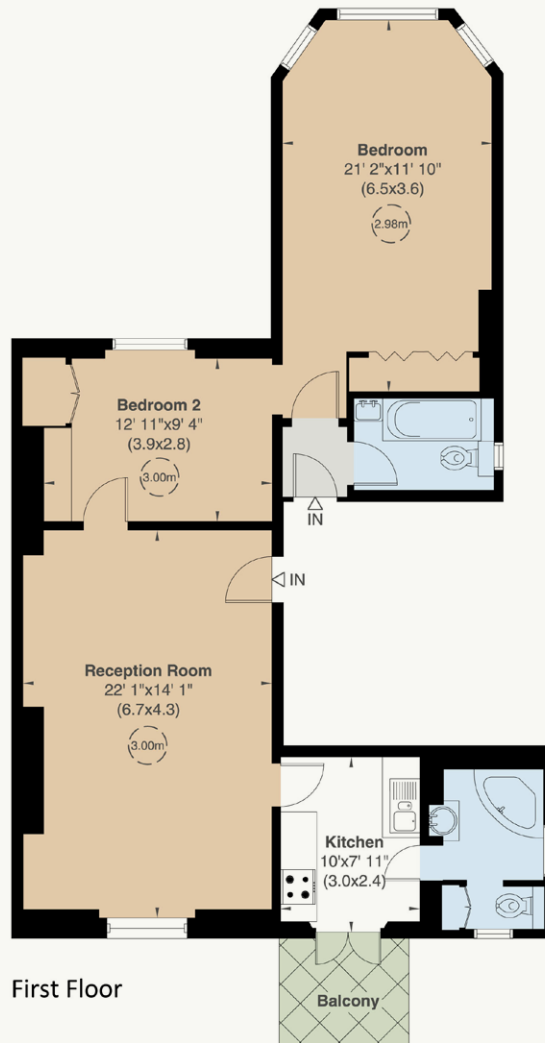


Chepstow Villas, W11

Gross internal area (approx.)

85 Sq m (918 Sq ft)

For identification only, Not to Scale



First Floor

For guidance only and must not be relied upon as a statement of fact or used for valuation purposes.
All measurements and areas are approximate only (and have been prepared in accordance with the current edition of the RICS Code of Measuring Practice).



Strutt & Parker Notting Hill

303 Westbourne Grove, London, W11 2QA

020 7221 1111 | nottinghill@struttandparker.com



@struttandparker

struttandparker.com

IMPORTANT NOTICE: Strutt & Parker gives notice that: 1. These particulars do not constitute an offer or contract or part thereof. 2. All descriptions, photographs and plans are for guidance only and should not be relied upon as statements or representations of fact. All measurements are approximate and not necessarily to scale. Any prospective purchaser must satisfy themselves of the correctness of the information within the particulars by inspection or otherwise. 3. Strutt & Parker does not have any authority to give any representations or warranties whatsoever in relation to this property (including but not limited to planning/building regulations), nor can it enter into any contract on behalf of the Vendor. 4. Strutt & Parker does not accept responsibility for any expenses incurred by prospective purchasers in inspecting properties which have been sold, let or withdrawn. 5. We are able to refer you to SPF Private Clients Limited ("SPF") for mortgage broking services, and to Alexander James Interiors ("AJI"), an interior design service. Should you decide to use the services of SPF, we will receive a referral fee from them of 25% of the aggregate of the fee paid to them by you for the arrangement of a mortgage and any fee received by them from the product provider. Should you decide to use the services of AJI, we will receive a referral fee of 10% of the net income received by AJI for the services they provide to you. 6. If there is anything of particular importance to you, please contact this office and Strutt & Parker will try to have the information checked for you. Strutt & Parker is a trading style of BNP Paribas Real Estate Advisory & Property Management UK Limited. Photographs taken April 2026. Particulars prepared April 2026.

Strutt & Parker

Land and property. Since 1885.