

Amistad, Cherry Tree Lane
Fulmer



Strutt
& Parker

Land and property. Since 1885.

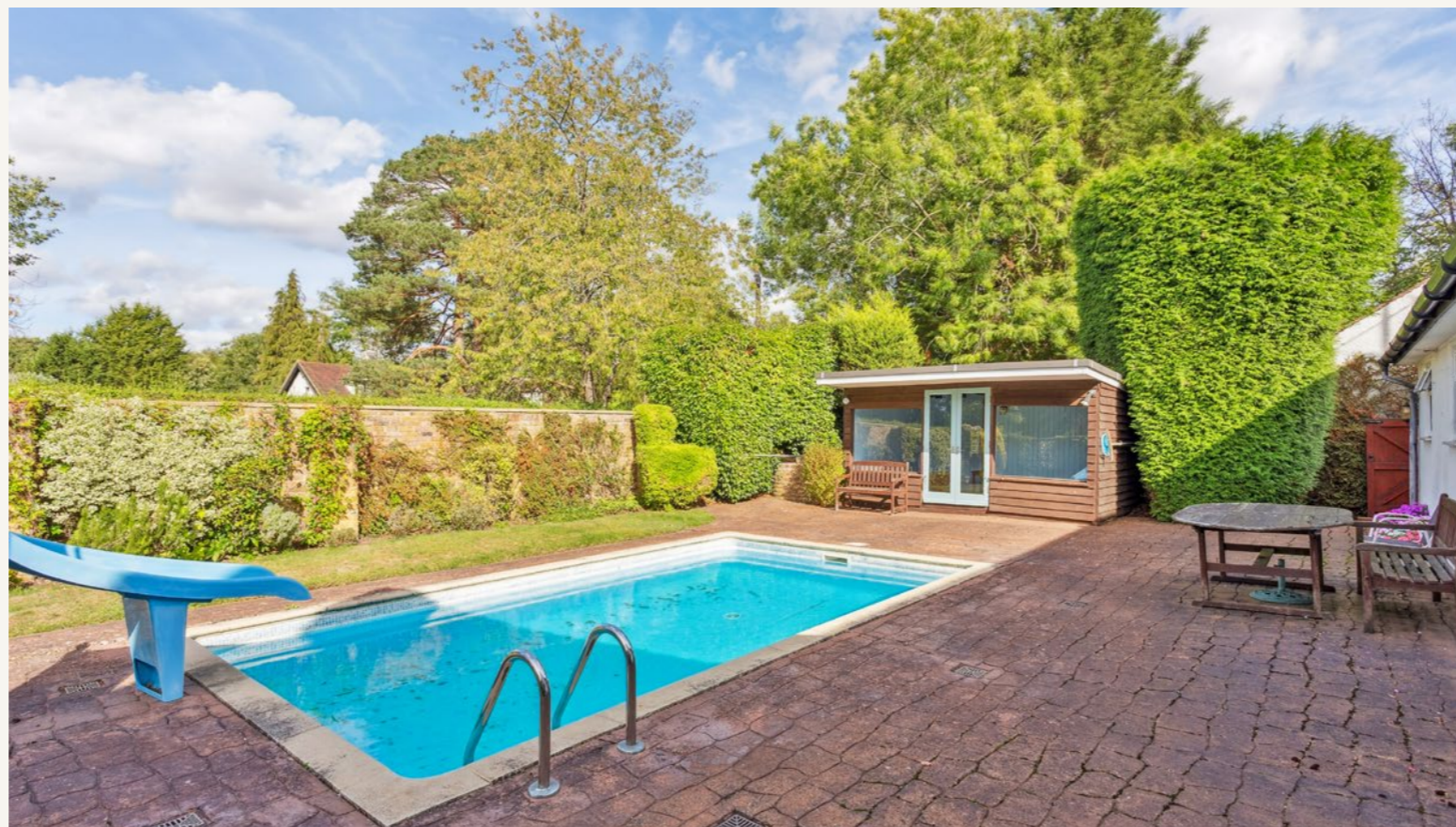
Enviably in a beautiful rural location, a detached chalet bungalow that has been extended and remodelled to provide flexible accommodation. The property sits on a fantastic plot approaching 1/3 acre, parking for several cars and garaging.

A bright and spacious hallway leads to the double aspect lounge/dining room with an open fireplace and patio doors opening onto the garden. The spacious kitchen/breakfast room looks out onto the front of the property. On this level there is a cloakroom along with a principal bedroom with a dressing area and en suite shower room.

On the first floor there are three further bedrooms and a family bathroom. There is an additional wing, which offers flexible accommodation made up of four rooms that can be used as bedrooms or office space.

The property is approached by a large gravel driveway providing parking for several cars. There is a degree of seclusion from the road with an area of lawn and gated side access to both sides of the property.

The rear garden is laid mainly to lawn and has an outdoor swimming pool. The property benefits from a double garage, utility along with a further single garage. A second gravelled driveway accesses the rear of the property, providing parking.



The village of Fulmer is a delightful picturesque village, which has won Buckinghamshire's Best Kept Village competition on numerous occasions. There is a pub, parish church, village hall along with Fulmer Infant School. The nearby town of Gerrards Cross provides a host of shopping facilities, including, Waitrose, Tesco, coffee shops, restaurants, independent boutiques, a community library and an Everyman cinema.

Transport links from Fulmer are excellent, with easy access to M25 and M40, while Gerrards Cross mainline service offers fast links to central London (London Marylebone).

Sporting facilities include, Stoke Park Country Club, Wexham Golf Club and The Buckinghamshire Golf Club, while there are sports clubs in Gerrards Cross offering tennis, cricket and hockey. The property is situated close to Black Park Country Park.

Postcode region: SL3

General

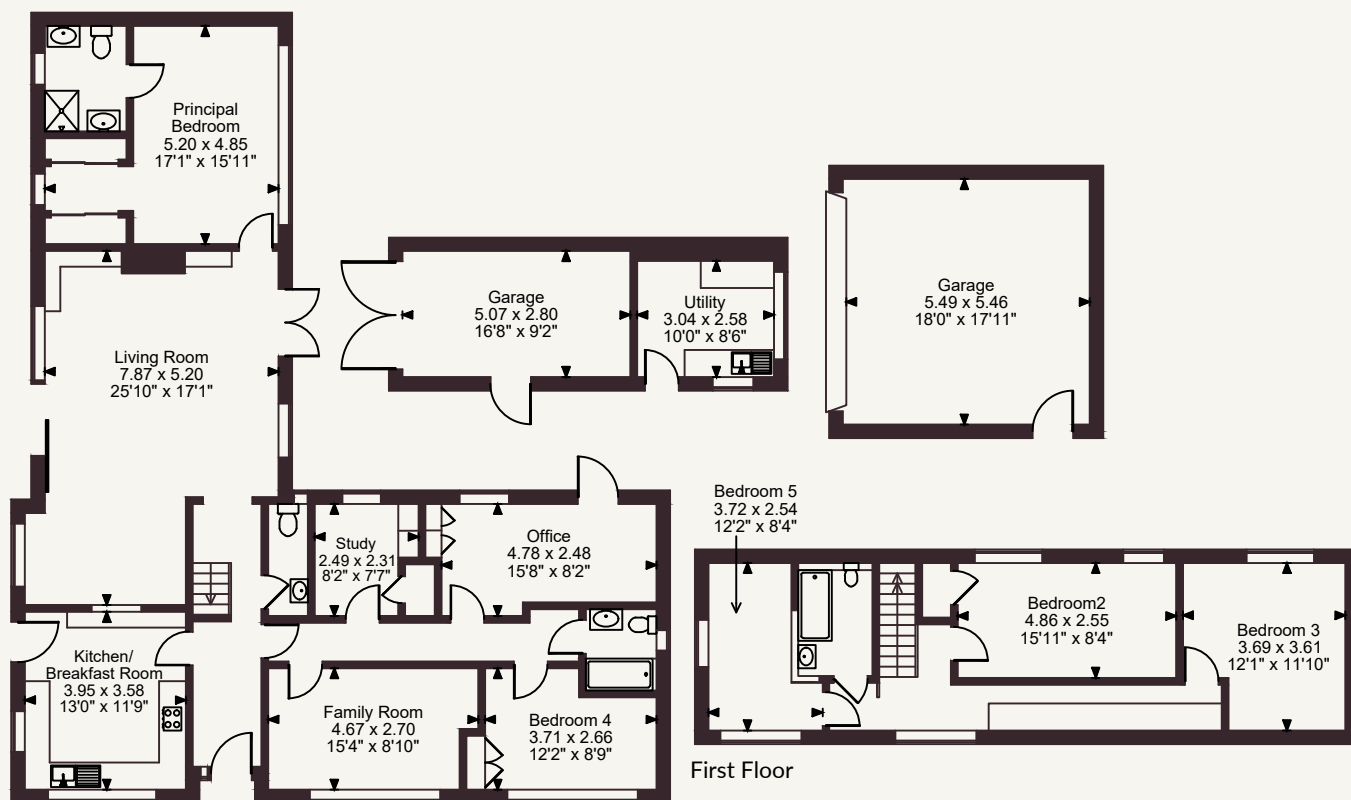
Local Authority: South Buckinghamshire
Services: Mains gas, electric, water and drainage
Council Tax: Band :G
EPC Rating: E
Mobile and Broadband checker: Information can be found here <https://checker.ofcom.org.uk/en-gb/>

2,693 sq ft (250 sq m)
Semi rural location
Swimming pool
Plot approaching 1/3 acre
Garage & parking for several cars
Freehold | Village

Guide price £995,000



Amistad, Cherry Tree Lane, Slough
 Ground Floor internal area 1,559 sq ft (145 sq m)
 First Floor internal area 563 sq ft (52 sq m)
 Outbuildings internal area 571 sq ft (53 sq m)
 Total internal area 2,693 sq ft (250 sq m)



Ground Floor

FOR ILLUSTRATIVE PURPOSES ONLY - NOT TO SCALE

The position & size of doors, windows, appliances and other features are approximate only.

© ehouse. Unauthorised reproduction prohibited. Drawing ref. dig/8691778/SS

Strutt & Parker Gerrards Cross

83 Packhorse Road, Gerrards Cross SL9 8PJ

01753 891188 | gerrardcross@struttandparker.com



@struttandparker struttandparker.com

Strutt & Parker

Land and property. Since 1885.

IMPORTANT NOTICE: Strutt & Parker gives notice that: 1. These particulars do not constitute an offer or contract or part thereof. 2. All descriptions, photographs and plans are for guidance only and should not be relied upon as statements or representations of fact. All measurements are approximate and not necessarily to scale. Any prospective purchaser must satisfy themselves of the correctness of the information within the particulars by inspection or otherwise. 3. Strutt & Parker does not have any authority to give any representations or warranties whatsoever in relation to this property (including but not limited to planning/building regulations), nor can it enter into any contract on behalf of the Vendor. 4. Strutt & Parker does not accept responsibility for any expenses incurred by prospective purchasers in inspecting properties which have been sold, let or withdrawn. 5. We are able to refer you to SPF Private Clients Limited ("SPF") for mortgage broking services, and to Alexander James Interiors ("AJI"), an interior design service. Should you decide to use the services of SPF, we will receive a referral fee from them of 25% of the aggregate of the fee paid to them by you for the arrangement of a mortgage and any fee received by them from the product provider. Should you decide to use the services of AJI, we will receive a referral fee of 10% of the net income received by AJI for the services they provide to you. 6. If there is anything of particular importance to you, please contact this office and Strutt & Parker will try to have the information checked for you. Strutt & Parker is a trading style of BNP Paribas Real Estate Advisory & Property Management UK Limited. Photographs taken April 2026. Particulars prepared May 2026.