

# CHESTER SQUARE

BELGRAVIA SW1



A superb three bedroom lateral flat situated on the third floor of this in a highly regarded building at the southern end of Chester Square in Belgravia. This bright flat has an ideal layout with stylish open-plan living space and unusually the flat also benefits from a secure underground parking space in the basement and a storage room.

















CHESTER SQUARE IN AN ICONIC BELGRAVIA ADDRESS, CLOSE TO ALL THE BOUTIQUE SHOPS AND RESTAURANTS OF ELIZABETH STREET AND THE TRANSPORT FACILITIES OF SLOANE SQUARE.







**TENURE:** Share of freehold, Leasehold expiring  
25th September 2147

**SERVICE CHARGE:** Quarterly service charge £2,635.80  
for the period 29.9.23 to 24.12.23, plus an addition  
£535.50 quarterly contribution to the reserve fund.

**LOCAL AUTHORITY:** City of Westminster

**EPC RATING:** C

**COUNCIL TAX:** Band H

**ASKING PRICE:** £4,650,000

**STRUTT  
& PARKER**

BNP PARIBAS GROUP

**Sloane Street**

66 Sloane Street, London SW1X 9SH

**020 7225 3866**

sloanestreet@struttandparker.com

**f** /struttandparker

**t** @struttandparker

struttandparker.com

Over 45 offices across England  
and Scotland, including prime  
Central London

**OnTheMarket.com**

**IMPORTANT NOTICE**

Strutt & Parker gives notice that: 1. These particulars do not constitute an offer or contract or part thereof. 2. All descriptions, photographs and plans are for guidance only and should not be relied upon as statements or representations of fact. All measurements are approximate and not necessarily to scale. Any prospective purchaser must satisfy themselves of the correctness of the information within the particulars by inspection or otherwise. 3. Strutt & Parker does not have any authority to give any representations or warranties whatsoever in relation to this property (including but not limited to planning/building regulations), nor can it enter into any contract on behalf of the Vendor. 4. Strutt & Parker does not accept responsibility for any expenses incurred by prospective purchasers in inspecting properties which have been sold, let or withdrawn. 5. We are able to refer you to SPF Private Clients Limited ("SPF") for mortgage broking services, and to Alexander James Interiors ("AJI"), an interior design service. Should you decide to use the services of SPF, we will receive a referral fee from them of 25% of the aggregate of the fee paid to them by you for the arrangement of a mortgage and any fee received by them from the product provider. Should you decide to use the services of AJI, we will receive a referral fee of 10% of the net income received by AJI for the services they provide to you. 6. If there is anything of particular importance to you, please contact this office and Strutt & Parker will try to have the information checked for you. Photographs taken July 2023. Particulars prepared July 2023. Strutt & Parker is a trading style of BNP Paribas Real Estate Advisory & Property Management UK Limited Brochure by TwentyOneFifty Tel: 020 8778 2150



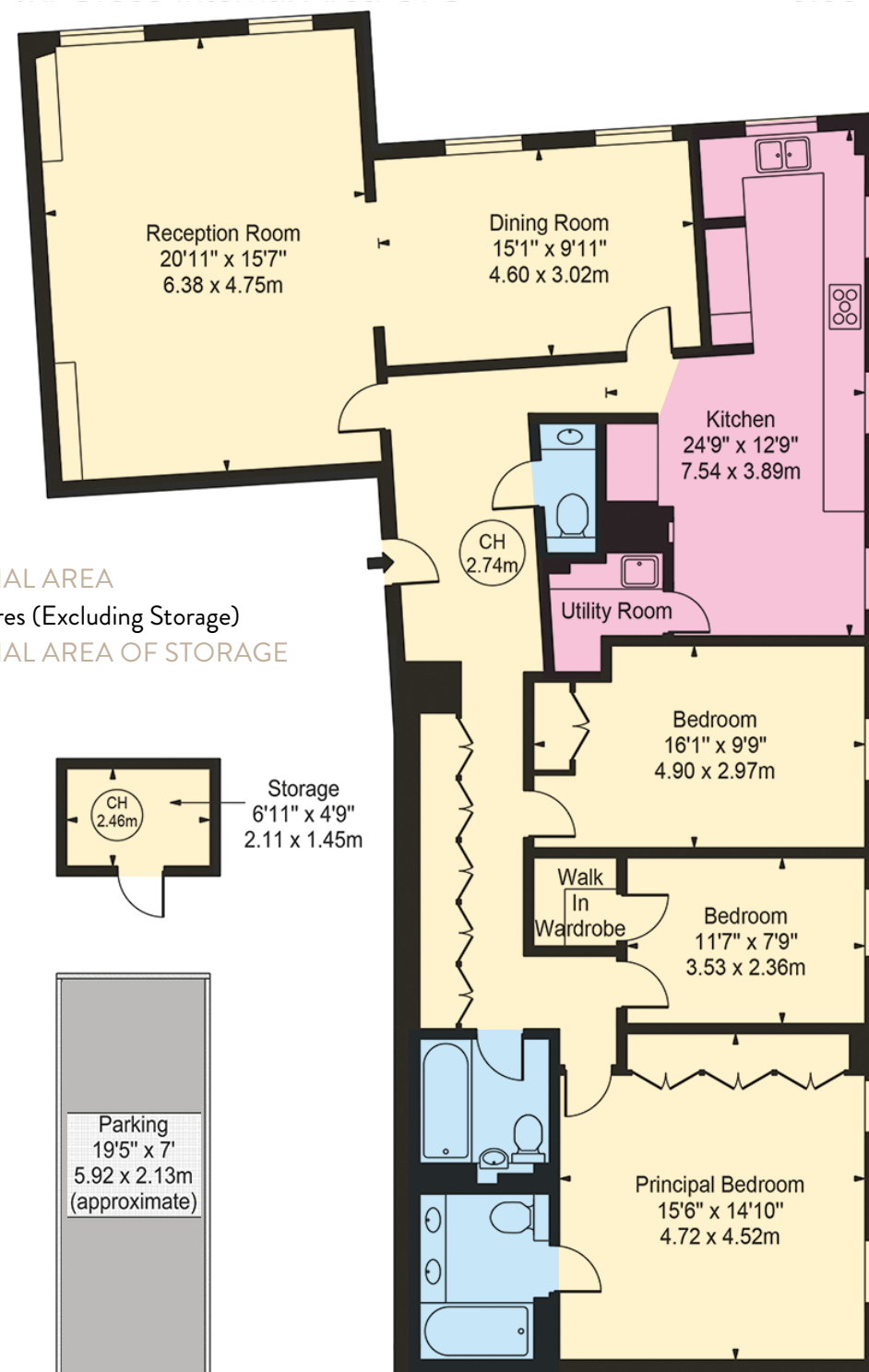
**APPROX. GROSS INTERNAL AREA**

1,637 sq feet - 152.08 sq metres (Excluding Storage)

**APPROX. GROSS INTERNAL AREA OF STORAGE**

33 sq feet - 3.06 sq metres

Not to scale, for guidance only and must not  
be relied upon as a statement of fact.  
All measurements and areas are  
approximate only and have been prepared  
in accordance with the current edition of the  
RICS Code of Measuring Practice



**THIRD FLOOR**