

Chesterford Gardens

London, NW3



A stunning garden flat extending to approx. 2,500sqft.

Located on a premier road in Hampstead a five bedroom maisonette within 0.3 miles of the village.



2 RECEPTION ROOMS



5 BEDROOMS



4 BATHROOMS



2,632 SQ FT



**PRICE
£3,250 PW**

The property

A lateral garden flat positioned on a desirable tree lined road in Hampstead.

The maisonette is accessed via its own private front door, at ground floor level there is a beautiful sitting room overlooking the gardens, principal bedroom with terrace and en-suite bathroom, two further bedrooms and a family bathroom.

At garden level there is a stunning open plan living, kitchen/ dining area opening on to the beautiful south-west facing garden, there are two additional bedrooms both with en-suite shower rooms (one of which with access to street level) a separate guest w.c. and laundry room. There is an abundance of storage throughout the house and a separate plant room that also provides additional storage.

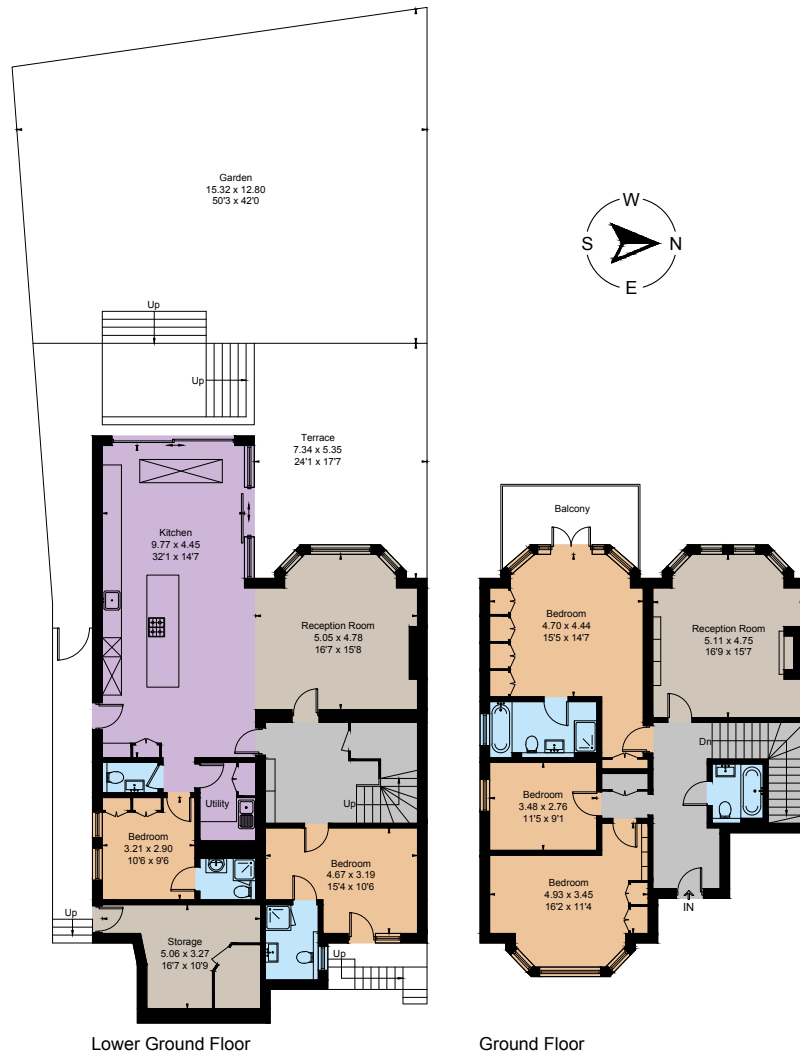
The south-west facing garden is a particular feature with an extensive terrace that is directly accessed from the dining area.

Location

Chesterford Gardens is a tree-lined road within 0.3 miles of the boutiques, cafes, and restaurants of Hampstead Village. Hampstead underground (Northern line) is 0.4 miles and the expansive open space of Hampstead Heath is half a mile distant.







Floorplans

Gross internal area 2,492 sq ft (231.5 sq m)

Storage 140 sq ft (13 sq m)

Total 2,632 sq ft (244.5 sq m)

For identification purposes only.

General

Price: £3,250 pw *plus charges

Local Authority: London Borough of Camden

Council Tax: Band G

EPC Rating: TBC

Parking: Residents CA- H

Broadband: Available

*The following Tenant Charges may apply prior to tenancy commencement: Tenancy Agreement £354 (inc VAT),

Credit References per application £70 (inc VAT).

All advertised prices are exclusive of utility and other associated services; struttandparker.com/tenantcharges.

IMPORTANT NOTICE: Strutt & Parker gives notice that: 1. These particulars do not constitute an offer or contract or part thereof. 2. All descriptions, photographs and plans are for guidance only and should not be relied upon as statements or representations of fact. All measurements are approximate and not necessarily to scale. Any prospective purchaser must satisfy themselves of the correctness of the information within the particulars by inspection or otherwise. 3. Strutt & Parker does not have any authority to give any representations or warranties whatsoever in relation to this property (including but not limited to planning/building regulations), nor can it enter into any contract on behalf of the Vendor. 4. Strutt & Parker does not accept responsibility for any expenses incurred by prospective purchasers in inspecting properties which have been sold, let or withdrawn. 5. We are able to refer you to SPF Private Clients Limited ("SPF") for mortgage broking services, and to Alexander James Interiors ("AJI"), an interior design service. Should you decide to use the services of SPF, we will receive a referral fee from them of 25% of the aggregate of the fee paid to them by you for the arrangement of a mortgage and any fee received by them from the product provider. Should you decide to use the services of AJI, we will receive a referral fee of 10% of the net income received by AJI for the services they provide to you. 6. If there is anything of particular importance to you, please contact this office and Strutt & Parker will try to have the information checked for you. Photographs taken October 2025. Particulars prepared October 2025. Strutt & Parker is a trading style of BNP Paribas Real Estate Advisory & Property Management UK Limited

Notting Hill

303 Westbourne Grove, London, W11 2QA

020 7221 1111

nottinghill@struttandparker.com

struttandparker.com



@struttandparker

Over 50 offices across England and Scotland,
including Prime Central London

For the finer things in property.

