

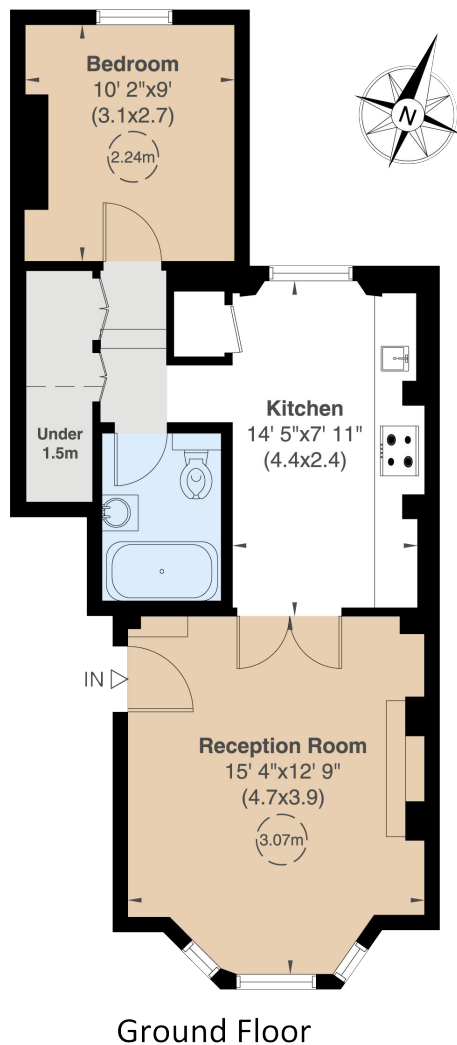


Chesterton Road

North Kensington, W10

**STRUTT
& PARKER**

BNP PARIBAS GROUP



A stylishly presented ground floor flat with 3m ceiling heights.

This immaculate one-bedroom flat is situated in a handsome period building on a pretty, tree lined street in the heart of North Kensington.

Having undergone extensive renovations the flat is beautifully presented with a new kitchen and bathroom. With an abundance of natural light the south-facing reception room has impressive proportions and ceiling height. The bedroom is situated at the rear of the property with built in storage.

Chesterton Road is an attractive tree-lined road located close to Ladbroke Grove, Golborne Road, Portobello Road and all the other fabulous amenities of Notting Hill. Ladbroke Grove underground station (Circle and Hammersmith and City Lines) are situated nearby.

Floorplans

Gross internal area 503 sq ft (47 sq m)

including under 1.5m

487 sq ft (45 sq m) excluding under 1.5m

For identification purposes only.

General

Tenure: Share of Freehold

Local Authority: The Royal Borough of Kensington and Chelsea

Service Charge: Approximately £3,000 pa

Council Tax: Band D

EPC Rating: C

Parking: Residents parking

Broadband: Available

Asking Price: £595,000

Notting Hill

303 Westbourne Grove, London, W11 2QA

020 7221 1111

nottinghill@struttandparker.com
struttandparker.com

IMPORTANT NOTICE: Strutt & Parker gives notice that: 1. These particulars do not constitute an offer or contract or part thereof. 2. All descriptions, photographs and plans are for guidance only and should not be relied upon as statements or representations of fact. All measurements are approximate and not necessarily to scale. Any prospective purchaser must satisfy themselves of the correctness of the information within the particulars by inspection or otherwise. 3. Strutt & Parker does not have any authority to give any representations or warranties whatsoever in relation to this property (including but not limited to planning/building regulations), nor can it enter into any contract on behalf of the Vendor. 4. Strutt & Parker does not accept responsibility for any expenses incurred by prospective purchasers in inspecting properties which have been sold, let or withdrawn. 5. We are able to refer you to SPF Private Clients Limited ("SPF") for mortgage broking services, and to Alexander James Interiors ("AJI"), an interior design service. Should you decide to use the services of SPF, we will receive a referral fee from them of 25% of the aggregate of the fee paid to them by you for the arrangement of a mortgage and any fee received by them from the product provider. Should you decide to use the services of AJI, we will receive a referral fee of 10% of the net income received by AJI for the services they provide to you. 6. If there is anything of particular importance to you, please contact this office and Strutt & Parker will try to have the information checked for you. Photographs taken February 2025. Particulars prepared February 2025. Strutt & Parker is a trading style of BNP Paribas Real Estate Advisory & Property Management UK Limited



@struttandparker

Over 50 offices across England and Scotland,
including Prime Central London

For the finer things in property.

