

CHEYNE WALK

CHELSEA SW10



A marvellous seven-bedroom house with lift and good garden, set back on Cheyne Walk with remarkable river views from a stunning roof terrace and total river frontage, further enjoying a separate annexed summer house







An enchanting period house set back behind its own front garden and providing extensive and flexible family accommodation with the rare benefit of a lift, a charming dining hall, a large rear garden with a separate summer house, and the option of a self-contained flat on the lower ground floor.

This most attractive southwest-facing property benefits from a passenger lift serving all floors, a wonderful roof terrace with spectacular river views, a 38 ft rear garden (circa 600 sq ft) and a most useful and appealing separate summer house.

Furthermore, there is a large dining room overlooking the rear garden at ground floor and a stunning first floor drawing room which commands direct views of the Thames.





Historical Note

Cheyne Walk, located in Chelsea along the north bank of the River Thames, boasts a rich and illustrious history, making it one of London's most prestigious residential addresses.

Established in the early 18th century, this picturesque street features a stunning array of Georgian and Victorian townhouses that reflect the architectural elegance of their eras. In the 19th century, Cheyne Walk became a haven for artists, writers, and notable figures, contributing to its prestigious reputation. The renowned artist Dante Gabriel Rossetti lived at No16, transforming the property into a hub of artistic activity. The celebrated novelist George Eliot resided at No4, where she completed several of her famous works. J.M.W. Turner, one of Britain's greatest painters, also called Cheyne Walk home, further cementing the street's association with artistic brilliance.

In the 20th century, Cheyne Walk continued to attract distinguished figures due to its blend of historical charm and modern amenities. Sir Mick Jagger of The Rolling Stones lived at No48 during the height of his career, marking the street with a legacy of Rock'n'Roll. The iconic film director Sir Laurence Olivier and actress Vivien Leigh, known for their illustrious careers in theatre and film, also resided here, adding to the street's glamorous reputation.

More recently, Cheyne Walk has maintained its appeal to high-profile residents, reflecting its timeless charm and elite status. Best-selling Irish author Marian Keyes, known for her popular novels like 'Watermelon' and 'Rachel's Holiday', has called Cheyne Walk home. Sir Christopher Lee, the iconic actor famous for his roles in 'Dracula' and 'The Lord of the Rings', was another notable resident, bringing a touch of cinematic history to the area. Keith Richards, fellow Rolling Stones band member, also lived on Cheyne Walk, underscoring the street's continued association with rock music royalty.

Today, Cheyne Walk remains one of London's most coveted residential streets. Its prime location, historic significance, beautifully preserved properties, and impressive roster of past and present residents ensure its continued status as a symbol of exclusivity and elegance in the real estate market. The architectural beauty and serene riverside setting make it a sought-after location for affluent individuals seeking a blend of history, culture, and luxury.



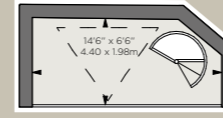


Accommodation

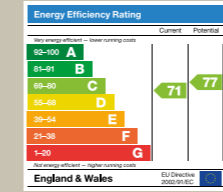
- Reception room
- Dining hall
- Kitchen
- Principal suite
- Six further bedrooms
- Four further bath/shower rooms
- Roof terrace with bar and Jacuzzi
- Utility room
- Lift
- Front and rear gardens
- Summer house with kitchenette and shower room
- Lower ground floor self-contained flat

Terms

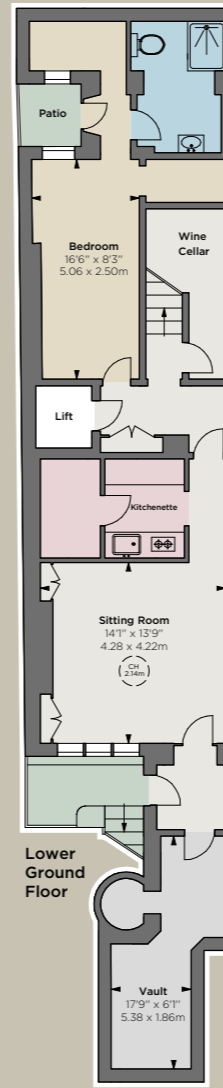
Tenure: Freehold
 Guide Price: £7,950,000
 Local Authority: The Royal Borough of Kensington & Chelsea
 Parking: Resident's permit
 Broadband: Installed at the property
 Council Tax: Band H
 EPC: Rating C



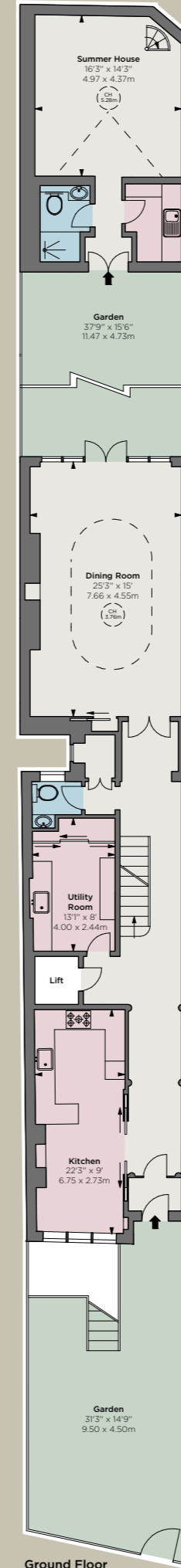
Mezzanine



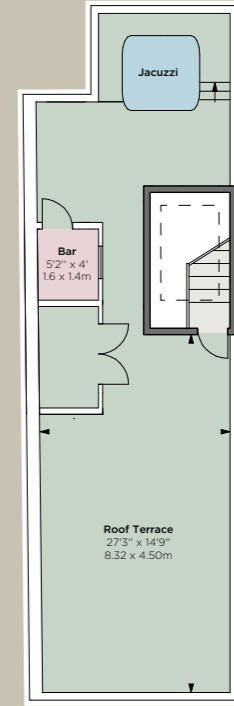
Approximate Gross Internal Area
 4,357 sq ft / 404.8 sq m
 excluding summer house and roof terrace bar
 Summer House Area
 431 sq ft / 40.13 sq m
 Roof Terrace Bar Area
 23 sq ft / 2.2 sq m
 Total Approximate Gross Internal Area
 4,812 sq ft
 447.13 sq m



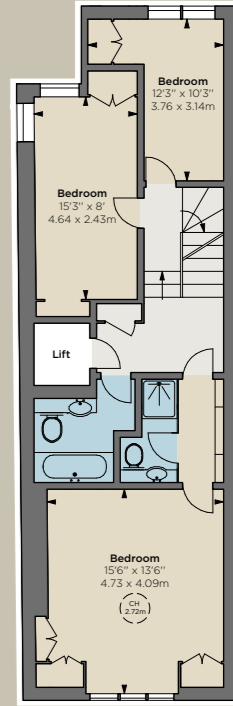
Lower Ground Floor



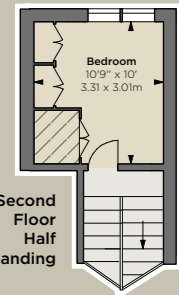
Ground Floor



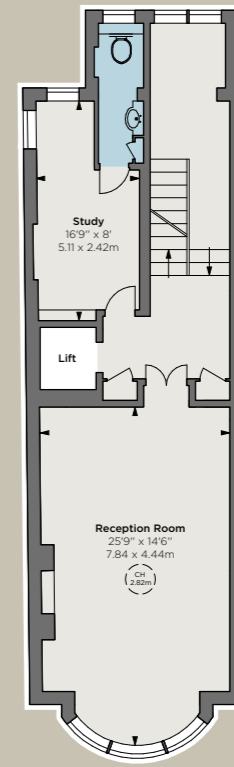
Fourth Floor



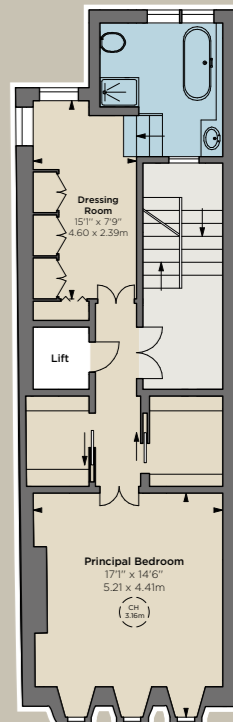
Third Floor



Second Floor Half Landing



First Floor



Second Floor



Hatched Area: Under 1.5m
 CH: Ceiling height

Floorplan for guidance only, not to scale or for valuations purposes. It must not be relied upon as a statement of fact. All measurements and areas are approximate and have been prepared in accordance with the current edition of the RICS Code of Measuring Practice.

© Alex Winship Photography



IMPORTANT NOTICE: Strutt & Parker gives notice that: 1. These particulars do not constitute an offer or contract or part thereof. 2. All descriptions, photographs and plans are for guidance only and should not be relied upon as statements or representations of fact. All measurements are approximate and not necessarily to scale. Any prospective purchaser must satisfy themselves of the correctness of the information within the particulars by inspection or otherwise. 3. Strutt & Parker does not have any authority to give any representations or warranties whatsoever in relation to this property (including but not limited to planning/building regulations), nor can it enter into any contract on behalf of the Vendor. 4. Strutt & Parker does not accept responsibility for any expenses incurred by prospective purchasers in inspecting properties which have been sold, let or withdrawn. 5. We are able to refer you to SPF Private Clients Limited ("SPF") for mortgage broking services, and to Alexander James Interiors ("AJI"), an interior design service. Should you decide to use the services of SPF, we will receive a referral fee from them of 25% of the aggregate of the fee paid to them by you for the arrangement of a mortgage and any fee received by them from the product provider. Should you decide to use the services of AJI, we will receive a referral fee of 10% of the net income received by AJI for the services they provide to you. 6. If there is anything of particular importance to you, please contact this office and Strutt & Parker will try to have the information checked for you. Photographs taken July 2024 and July 2025. Particulars prepared July 2025. Strutt & Parker is a trading style of BNP Paribas Real Estate Advisory & Property Management UK Limited 14/04/26 S&P-240712E-16-JF

Chelsea SW10

140 Fulham Road, SW10 9PY

+44 (0)20 7373 1010

chelseasw10@struttandparker.com
struttandparker.com

Over 50 offices across England and
Scotland, including Prime Central London

THE
BROCHURE



@struttandparker

For the finer things in property.

**STRUTT
& PARKER**

BNP PARIBAS GROUP