



# CHRISTCHURCH STREET

---

LONDON SW3



A BRIGHT WHITE-STUCCO FRONTED  
FOUR BEDROOM FAMILY HOUSE  
SITUATED ON A QUIET STREET SOUTH  
OF THE KING'S ROAD. THIS ATTRACTIVE  
HOUSE HAS WELL BALANCED LIVING  
ACCOMMODATION AND HIGH CEILINGS,  
SPANNING JUST FOUR FLOORS.





Christchurch Street is an attractive and quiet road situated between Tite Street and Flood Street, within 0.7 miles of Sloane Square and 0.3 miles from the tennis courts and private grounds of Burton Court (access by separate arrangement).

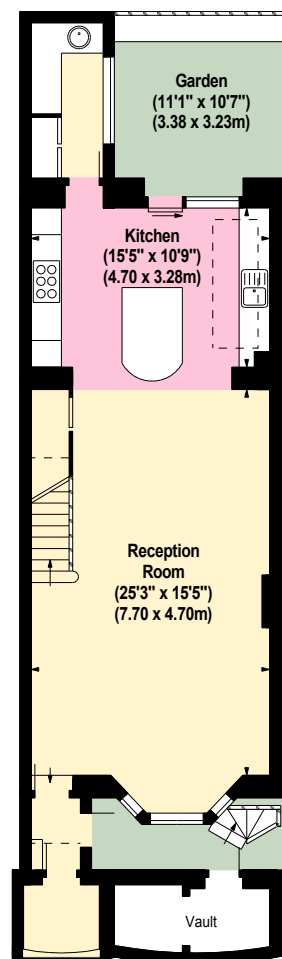




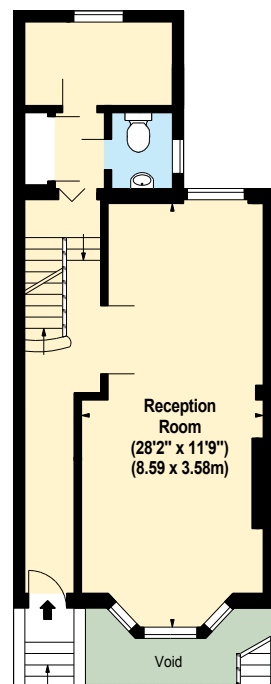
## APPROX. GROSS INTERNAL AREA

2,246 sq ft / 208.65 sq m

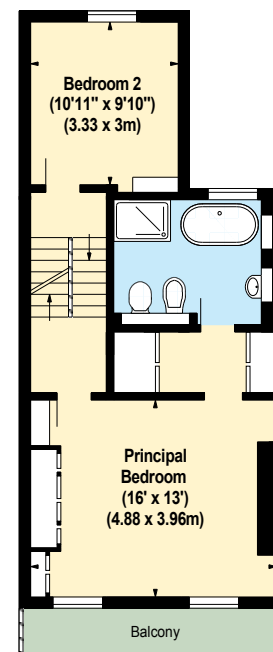
Illustration For Identification Only. Not to Scale.



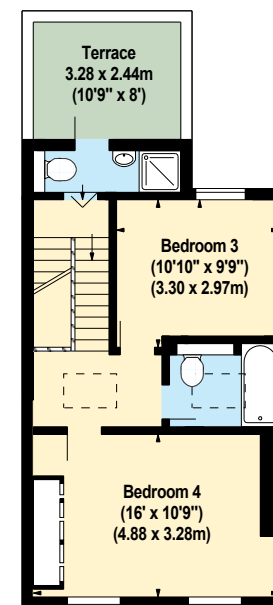
LOWER GROUND FLOOR



RAISED GROUND FLOOR



FIRST FLOOR



SECOND FLOOR



## Chelsea Office

43 Cadogan Street, London SW3 2PR

+44 (0)20 7225 3866

chelsea@struttandparker.com

struttandparker.com

Over 50 offices across  
England and Scotland,  
including prime  
Central London

TENURE Freehold

LOCAL AUTHORITY The Royal Borough of Kensington and Chelsea

COUNCIL TAX Band H EPC RATING Band E PARKING Available

BROADBAND Available ASKING PRICE £4,650,000

### IMPORTANT NOTICE

Strutt & Parker gives notice that: 1. These particulars do not constitute an offer or contract or part thereof. 2. All descriptions, photographs and plans are for guidance only and should not be relied upon as statements or representations of fact. All measurements are approximate and not necessarily to scale. Any prospective purchaser must satisfy themselves of the correctness of the information within the particulars by inspection or otherwise. 3. Strutt & Parker does not have any authority to give any representations or warranties whatsoever in relation to this property (including but not limited to planning/building regulations), nor can it enter into any contract on behalf of the Vendor. 4. Strutt & Parker does not accept responsibility for any expenses incurred by prospective purchasers in inspecting properties which have been sold, let or withdrawn. 5. We are able to refer you to SPF Private Clients Limited ("SPF") for mortgage broking services, and to Alexander James Interiors ("AJI"), an interior design service. Should you decide to use the services of SPF, we will receive a referral fee from them of 25% of the aggregate of the fee paid to them by you for the arrangement of a mortgage and any fee received by them from the product provider. Should you decide to use the services of AJI, we will receive a referral fee of 10% of the net income received by AJI for the services they provide to you. 6. If there is anything of particular importance to you, please contact this office and Strutt & Parker will try to have the information checked for you. Photographs taken May 2025. Particulars prepared May 2025. Strutt & Parker is a trading style of BNP Paribas Real Estate Advisory & Property Management UK Limited \*photographs show the house as previously furnished.

Brochure by TwentyOneFifty Tel: 020 8778 2150