

Larchwood, Church Lane
Figcheldean



Strutt
& Parker

Land and property. Since 1885.



3,164 sq ft (294 sq m) | Freehold
2 reception rooms | 5 bedrooms | 3 bathrooms
Garage/gym | Garden | Village location

Guide price £800,000

A substantial and versatile modern home offering attractive, light-filled accommodation, set within a charming Wiltshire village and enjoying stunning views over the surrounding countryside

Larchwood is an impressive detached home with red-brick elevations and attractive tile-hung detailing, offering extensive and flexible accommodation across two floors. The interior is light and airy, combining contemporary finishes with comfortable family living and extending to approximately 3,164 sq ft.

The ground-floor accommodation flows from a welcoming reception hall with built-in library shelving and leads to the expansive open-plan sitting and dining room, which extends to more than 26ft and features a striking central brick fireplace with a wood-burning stove. Large bi-fold doors open directly onto the rear garden, creating a seamless connection between the indoor and outdoor spaces, ideal for both everyday living and entertaining. The modern kitchen/breakfast room is well appointed with bespoke cabinetry, a range-style cooker and integrated appliances. Further accommodation includes a cloakroom, a private study and a spacious gym, which offers excellent potential for alternative uses.

On the first floor, the generous principal bedroom suite benefits from a dressing room and a modern en suite bathroom. There are four further well-proportioned bedrooms, served by a stylish family bathroom with a separate walk-in shower, together with an additional shower room.

The property is set back from the lane, with a driveway providing ample parking and access to the garage which has been converted into a gym. To the rear, the beautifully maintained garden is predominantly laid to lawn and bordered by mature shrubs and well-stocked flowerbeds. A large stone patio provides an ideal setting for al fresco dining and entertaining, while additional features include a greenhouse, a garden shed and an open wood store. Beyond the garden, the property enjoys far-reaching views across the rolling Wiltshire countryside. There is a private gate which gives direct access to the surrounding countryside.

Location

Figcheldean is a popular Wiltshire village on the edge of Salisbury Plain, with local amenities including a village hall. There are 3 supermarkets about 2 miles away in Durrington and there are public houses at Netheravon and Durrington. The nearby towns of Amesbury (4 miles), Tidworth (5 miles) and Salisbury (11 miles) provide a wider selection of shopping, leisure and cultural facilities, while the World Heritage Site of Stonehenge is within easy reach. Education is well served, with leading independent schools including Chafyn Grove, Leehurst Swan and Godolphin in Salisbury, together with Farleigh School near Andover. The local primary school is at Larkhill with the secondary school at Durrington.

Communications are excellent, with the A303 providing convenient access to London and the South West, while mainline rail services from Salisbury, Grateley and Andover offer regular connections to London Waterloo.

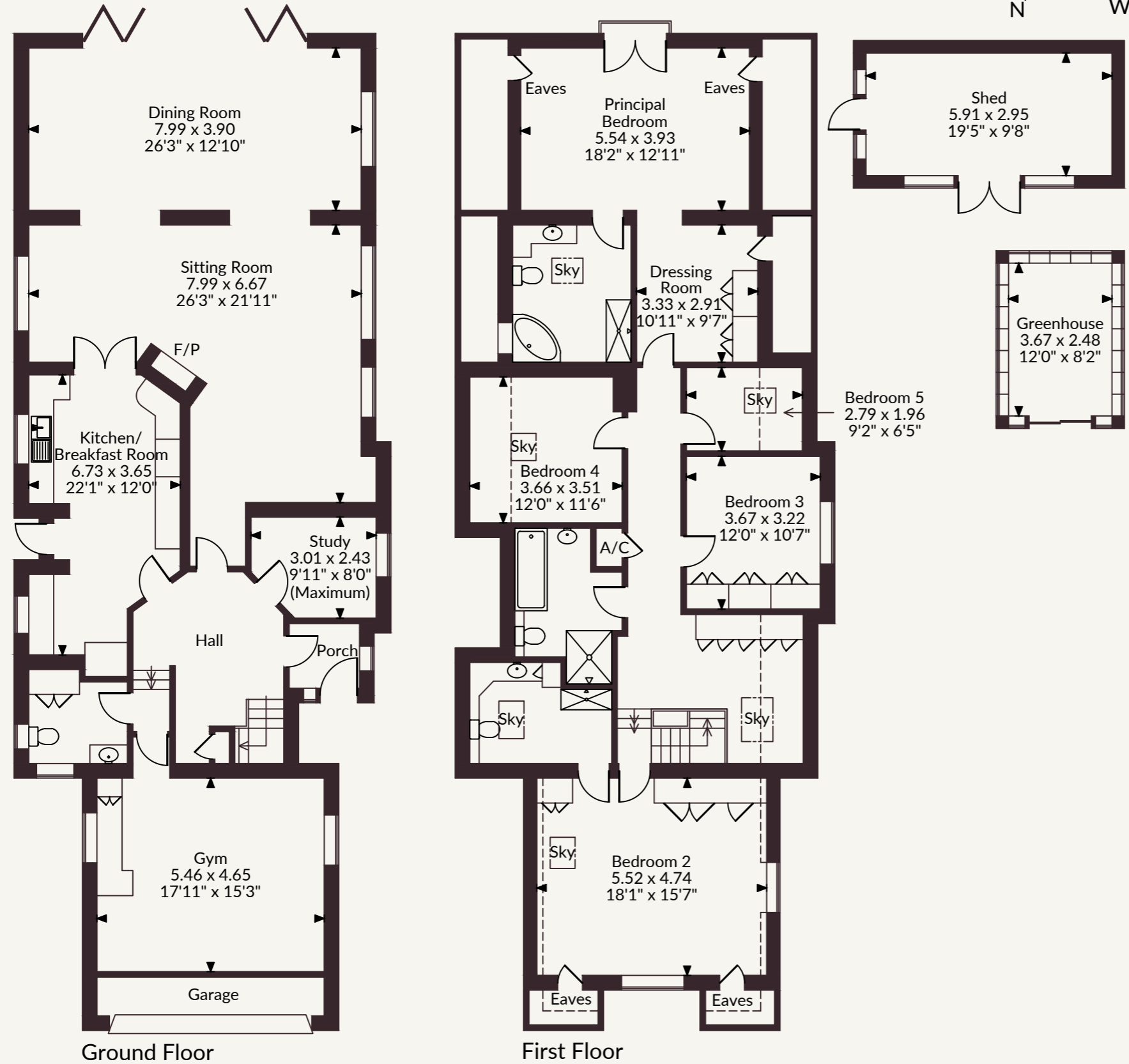
Postcode region: SP4

General

Local Authority: Wiltshire Council
Services: Mains water and electricity. Oil fired central heating.
Private drainage which we understand is compliant with current regulations
Council Tax: Band F
EPC Rating: C
Mobile and Broadband checker: Information can be found here <https://checker.ofcom.org.uk/en-gb/>



Larchwood Church Lane, Figheldean
 Main House internal area 3,164 sq ft (294 sq m)
 Garage internal area 55 sq ft (5 sq m)
 Outbuilding internal area 286 sq ft (27 sq m)
 Total internal area 3,505 sq ft (326 sq m)



Ground Floor
 First Floor
 FOR ILLUSTRATIVE PURPOSES ONLY - NOT TO SCALE
 The position & size of doors, windows, appliances and other features are approximate only.
 ☐☐☐☐ Denotes restricted head height
 © ehouse. Unauthorised reproduction prohibited. Drawing ref. dig/8694550/DMS



Salisbury
 41 Milford Street, Salisbury, Wiltshire SP1 2BP
 01722 344010 | salisbury@struttandparker.com

@struttandparker struttandparker.com

IMPORTANT NOTICE: Strutt & Parker gives notice that: 1. These particulars do not constitute an offer or contract or part thereof. 2. All descriptions, photographs and plans are for guidance only and should not be relied upon as statements or representations of fact. All measurements are approximate and not necessarily to scale. Any prospective purchaser must satisfy themselves of the correctness of the information within the particulars by inspection or otherwise. 3. Strutt & Parker does not have any authority to give any representations or warranties whatsoever in relation to this property (including but not limited to planning/building regulations), nor can it enter into any contract on behalf of the Vendor. 4. Strutt & Parker does not accept responsibility for any expenses incurred by prospective purchasers in inspecting properties which have been sold, let or withdrawn. 5. We are able to refer you to SPF Private Clients Limited ("SPF") for mortgage broking services, and to Alexander James Interiors ("AJI"), an interior design service. Should you decide to use the services of SPF, we will receive a referral fee from them of 25% of the aggregate of the fee paid to them by you for the arrangement of a mortgage and any fee received by them from the product provider. Should you decide to use the services of AJI, we will receive a referral fee of 10% of the net income received by AJI for the services they provide to you. 6. If there is anything of particular importance to you, please contact this office and Strutt & Parker will try to have the information checked for you. Strutt & Parker is a trading style of BNP Paribas Real Estate Advisory & Property Management UK Limited. Photographs taken June 2026. Particulars prepared June 2026



Strutt
& Parker

Land and property. Since 1885.