



Blenheim Crescent, Notting Hill, W11

For the finer things in property.

**STRUTT  
& PARKER**

BNP PARIBAS GROUP 



# Blenheim Crescent, Notting Hill, W11

A three bedroom maisonette with a large roof terrace in a gated cul-de-sac.

Located in a well-presented, purpose built building, this bright and spacious flat has good entertaining space a large west-facing roof terrace and a private entrance. There are three double bedrooms, all with built in wardrobes, a bathroom and guest cloakroom on the first floor with the living space opening out onto a terrace on the top floor.

Blenheim Crescent is a popular, tree lined address just off Kensington Park Road, close to Portobello Road, Westbourne Grove and Notting Hill Gate. Local shops, excellent transport links and underground stations are located close by.

Entrance hall | Kitchen | Reception room | Three bedrooms | Bathroom | Cloakroom | Terrace  
EPC Rating C



## Terms

**Tenure:** Leasehold. 125 years from 24th March 1990

**Service Charge:** Approximately £3,600 pa

**Ground Rent:** Peppercorn

**Council Tax:** Band E

**Local Authority:** The Royal Borough of Kensington and Chelsea

**Asking Price:** £925,000

## Notting Hill

303 Westbourne Grove, London, W11 2QA

**020 7221 1111**

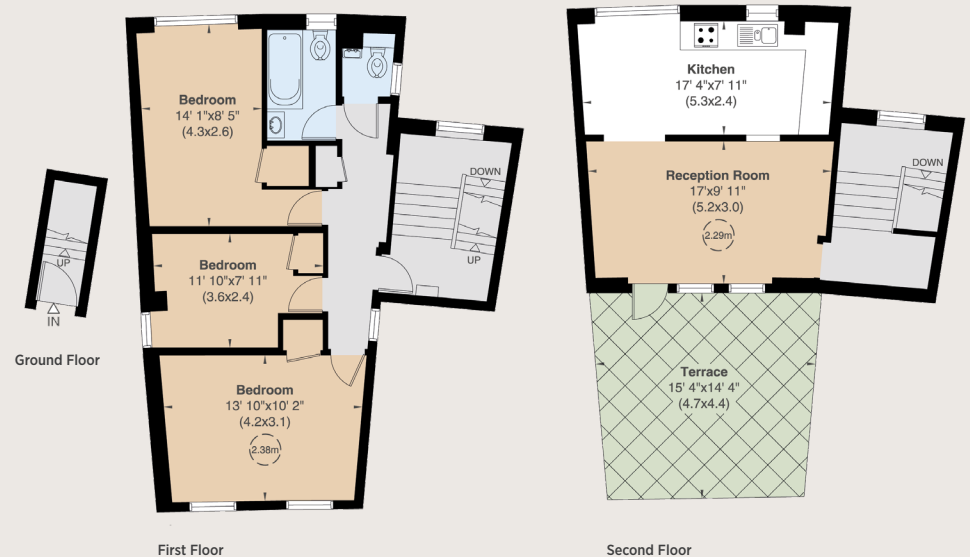
nottinghill@struttandparker.com

struttandparker.com

### IMPORTANT NOTICE

Strutt & Parker gives notice that: 1. These particulars do not constitute an offer or contract or part thereof. 2. All descriptions, photographs and plans are for guidance only and should not be relied upon as statements or representations of fact. All measurements are approximate and not necessarily to scale. Any prospective purchaser must satisfy themselves of the correctness of the information within the particulars by inspection or otherwise. 3. Strutt & Parker does not have any authority to give any representations or warranties whatsoever in relation to this property (including but not limited to planning/building regulations), nor can it enter into any contract on behalf of the Vendor. 4. Strutt & Parker does not accept responsibility for any expenses incurred by prospective purchasers in inspecting properties which have been sold, let or withdrawn. 5. We are able to refer you to SPF Private Clients Limited ("SPF") for mortgage broking services, and to Alexander James Interiors ("AJI"), an interior design service. Should you decide to use the services of SPF, we will receive a referral fee from them of 25% of the aggregate of the fee paid to them by you for the arrangement of a mortgage and any fee received by them from the product provider. Should you decide to use the services of AJI, we will receive a referral fee of 10% of the net income received by AJI for the services they provide to you. 6. If there is anything of particular importance to you, please contact this office and Strutt & Parker will try to have the information checked for you. Photographs taken March 2024. Particulars prepared March 2024 Strutt & Parker is a trading style of BNP Paribas Real Estate Advisory & Property Management UK Limited.

Gross Internal Area 1,034 sq ft (96 sq m)  
For identification purposes only.



Over 45 offices across England and Scotland,  
including Prime Central London

For the finer things in property.

**STRUTT  
& PARKER**

BNP PARIBAS GROUP