

Clareville Street,
SW7



Strutt
& Parker

Land and property. Since 1885.



1282 Sq Ft (119.10 Sq M) | Freehold
1 reception room | 3 bedrooms
2 bathrooms | Balcony

Guide price £2,895,000

P Resident
permit
holders
only
Mon - Fri
8.30 am - 6.30 pm
Sat
8.30 am - 1.30 pm

KM24 GB

A beautifully presented three-bedroom house on sought after Clareville Street, moments from the amenities of South Kensington.

This exceptional freehold residence seamlessly blends refined contemporary living with timeless architectural charm, set along one of South Kensington's most desirable addresses. Behind its elegant, characterful façade, the property has been meticulously refurbished to an exacting standard, creating a home of both style and substance, ready for immediate occupation.

The property

Forming part of an attractive period terrace on Clareville Street, this distinguished home enjoys a prime position just moments from the vibrant heart of South Kensington. The exterior retains its classic appeal, with a beautifully presented rendered façade, new traditional sash windows, and a newly installed slate and felt roof, all complementing its heritage setting.

Internally, the accommodation is arranged over three impeccably finished floors, designed with both sophistication and modern living in mind. The ground floor opens into an impressive open-plan reception, dining, and kitchen space, enhanced by a dual aspect that floods the interior with natural light. The bespoke kitchen is elegantly appointed with sleek cabinetry and high-specification integrated appliances, alongside a stylish marble effect quartz and panelled island, complete with two bar stools.

The space has been thoughtfully curated to offer distinct yet harmonious living zones, including a refined dining area and an inviting seating space centred around a striking marble fireplace with a bio-ethanol fire, framed by bespoke built-in cabinetry.

A sculptural contemporary staircase leads to the upper floors. The first floor hosts two generously proportioned bedrooms, each featuring custom fitted wardrobes, served by a beautifully presented family bathroom. The principal suite occupies the entire second floor, offering a tranquil and luxurious retreat. This floor benefits from excellent proportions, bespoke wardrobes with built-in dressing area, and direct access to a private balcony via new bi-fold doors. A sleek marble tiled en suite shower room, complete with double vanity with matching marble top, completes this indulgent space.



This home offers modern interiors, having been tastefully refurbished throughout, while retaining its characterful façade on this sought-after street in South Kensington. The property presents stylish and well-presented interiors that have been beautifully finished and is ready for immediate occupation.

Location

Clareville Street is discreetly positioned just off Old Brompton Road, placing an array of boutique shops, artisan cafés, and acclaimed restaurants within effortless reach. World-class transport connections are available at Gloucester Road and South Kensington stations, providing swift access across London via the District, Circle, and Piccadilly lines.

The verdant expanses of Hyde Park and Kensington Gardens are also nearby, offering a rare balance of cosmopolitan convenience and tranquil green space.

Postcode region: SW7

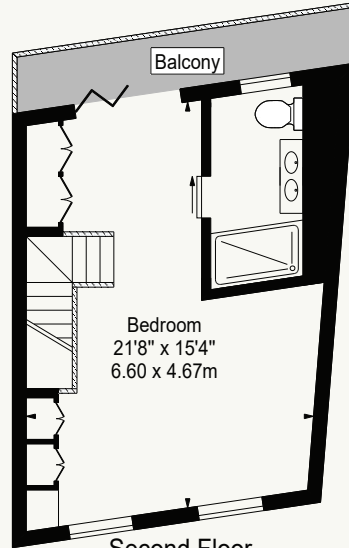
General

Local Authority: The Royal Borough of Kensington and Chelsea Council
Council Tax: Band G
EPC Rating: C
Mobile coverage and broadband: Information can be found here: <https://checker.ofcom.org.uk/en-gb/mobile-coverage>

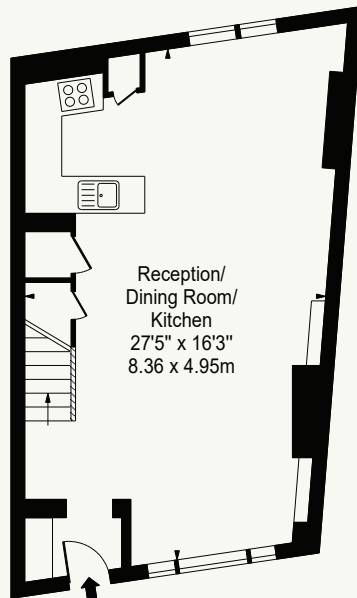


Clareville Street

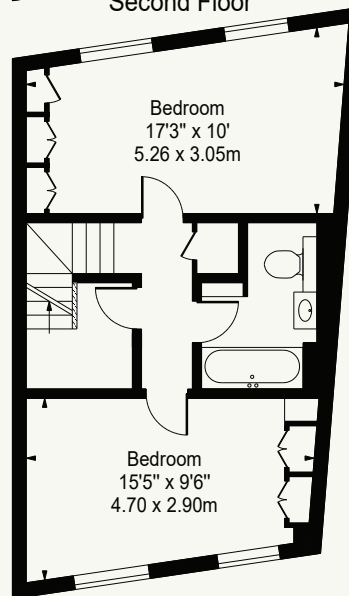
Approx. Gross Internal Area 1282 Sq Ft - 119.10 Sq M



Second Floor



Ground Floor



First Floor

For Illustration Purposes Only - Not To Scale

This floor plan should be used as a general outline for guidance only and does not constitute in whole or in part an offer or contract. Any intending purchaser or lessee should satisfy themselves by inspection, searches, enquiries and full survey as to the correctness of each statement. Any areas, measurements or distances quoted are approximate and should not be used to value a property or be the basis of any sale or let.

South Kensington Office

90 Old Brompton Road, London, SW7 3LQ

020 7581 7000 | southkensington@struttandparker.com



@struttandparker struttandparker.com

IMPORTANT NOTICE: Strutt & Parker gives notice that: 1. These particulars do not constitute an offer or contract or part thereof. 2. All descriptions, photographs and plans are for guidance only and should not be relied upon as statements or representations of fact. All measurements are approximate and not necessarily to scale. Any prospective purchaser must satisfy themselves of the correctness of the information within the particulars by inspection or otherwise. 3. Strutt & Parker does not have any authority to give any representations or warranties whatsoever in relation to this property (including but not limited to planning/building regulations), nor can it enter into any contract on behalf of the Vendor. 4. Strutt & Parker does not accept responsibility for any expenses incurred by prospective purchasers in inspecting properties which have been sold, let or withdrawn. 5. We are able to refer you to SPF Private Clients Limited ("SPF") for mortgage broking services, and to Alexander James Interiors ("AJI"), an interior design service. Should you decide to use the services of SPF, we will receive a referral fee from them of 25% of the aggregate of the fee paid to them by you for the arrangement of a mortgage and any fee received by them from the product provider. Should you decide to use the services of AJI, we will receive a referral fee of 10% of the net income received by AJI for the services they provide to you. 6. If there is anything of particular importance to you, please contact this office and Strutt & Parker will try to have the information checked for you. Strutt & Parker is a trading style of BNP Paribas Real Estate Advisory & Property Management UK Limited. Template by Fourwalls. Photographs taken March 2026. Particulars prepared April 2026.

Strutt & Parker

Land and property. Since 1885.