



Clareville Street, South Kensington, SW7

Clareville Street, SW7

An incredible double fronted house comprising three double bedrooms and three bathrooms which has been newly redecorated throughout.

Three Bedrooms | One Reception Room | Three Bathrooms | House | Roof Terrace | Unfurnished | EPC Rating C | Council Tax G

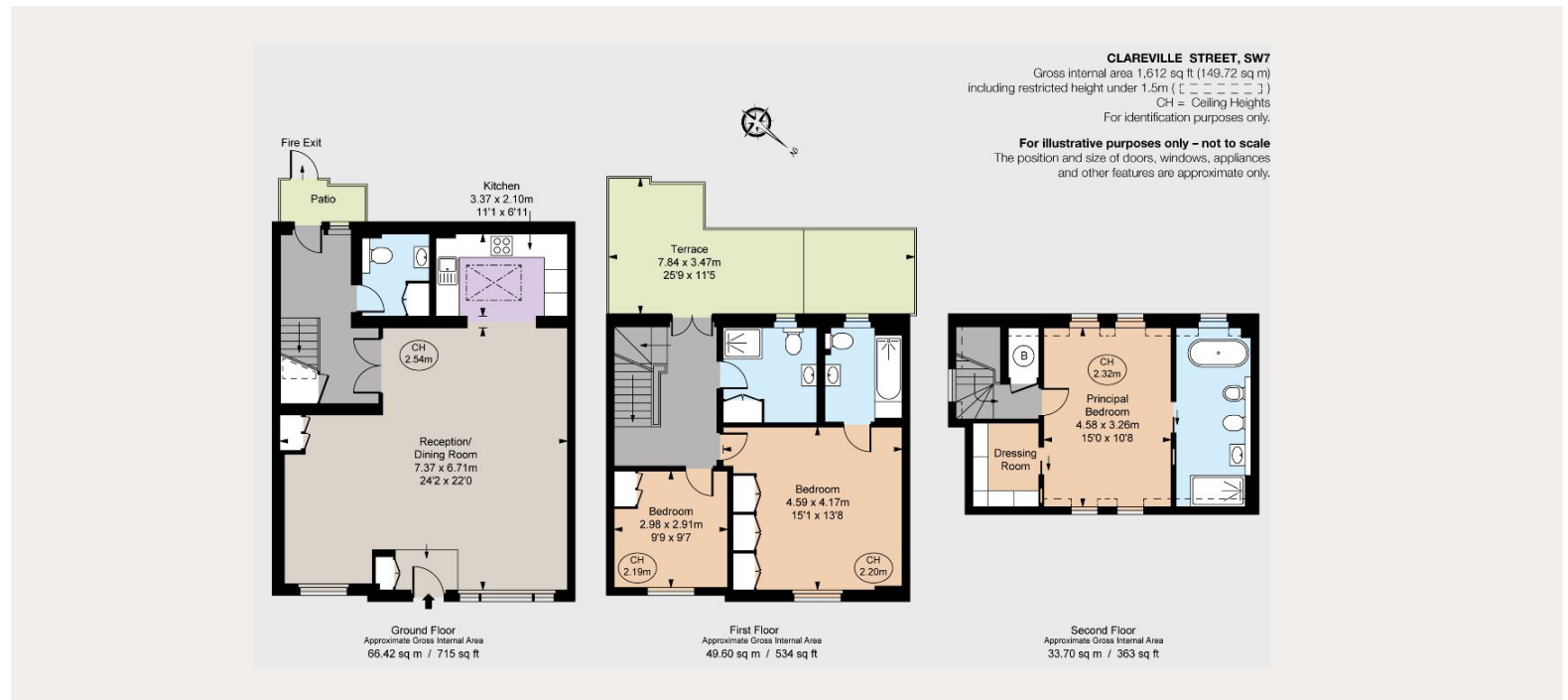
The ground floor, which has wooden flooring, has a spacious open plan kitchen/reception room and cloakroom. The first floor comprises two double bedrooms and two bathrooms (one en-suite) and access to a south west facing terrace. The principal bedroom and en suite is situated on the top floor and is flooded with natural light.

Clareville Street is a quiet residential street located moments from both South Kensington and Gloucester Road underground stations as well as the array of local shops, restaurants and supermarkets the area offers.

Terms

Local Authority: The Royal Borough of Kensington and Chelsea

Price: £1,725 per week (approx £7475 per month)



South Kensington

90 Old Brompton Road, London, SW7 3LQ

020 7581 7000

southken@struttandparker.com

IMPORTANT NOTICE: Strutt & Parker gives notice that: 1. These particulars do not constitute an offer or contract or part thereof. 2. All descriptions, photographs and plans are for guidance only and should not be relied upon as statements or representations of fact. All measurements are approximate and not necessarily to scale. Any prospective purchaser must satisfy themselves of the correctness of the information within the particulars by inspection or otherwise. 3. Strutt & Parker does not have any authority to give any representations or warranties whatsoever in relation to this property (including but not limited to planning/building regulations), nor can it enter into any contract on behalf of the Vendor. 4. Strutt & Parker does not accept responsibility for any expenses incurred by prospective purchasers in inspecting properties which have been sold, let or withdrawn. 5. We are able to refer you to SPF Private Clients Limited ("SPF") for mortgage broking services, and to Alexander James Interiors ("AJI"), an interior design service. Should you decide to use the services of SPF, we will receive a referral fee from them of 25% of the aggregate of the fee paid to them by you for the arrangement of a mortgage and any fee received by them from the product provider. Should you decide to use the services of AJI, we will receive a referral fee of 10% of the net income received by AJI for the services they provide to you. 6. If there is anything of particular importance to you, please contact this office and Strutt & Parker will try to have the information checked for you. Photographs taken August XXXX 2000. Particulars prepared XXXX 2000. Strutt & Parker is a trading style of BNP Paribas Real Estate Advisory & Property Management UK Limited.