

# Clareville Street

London, SW7





## A charming freehold house located in the quiet and sought-after Clareville Street, SW7.

This delightful three/four-bedroom house is nestled on the sought after Clareville Street.



**1 RECEPTION ROOM**



**4 BEDROOMS**



**2 BATHROOMS**



**FREEHOLD**



**1,305 SQ FT**



**GUIDE PRICE  
£2,425,000**



### The property

Flooded with natural light throughout, the property features a separate kitchen, dedicated dining area, private garden and terrace - both ideal for outdoor entertaining as well as quiet relaxation. Two spacious reception rooms offer versatile living space, with one easily adaptable as a fourth bedroom. The property further extends to three bedrooms - the principal bedroom being en-suite. The property benefits from two further bathrooms and excellent storage throughout.



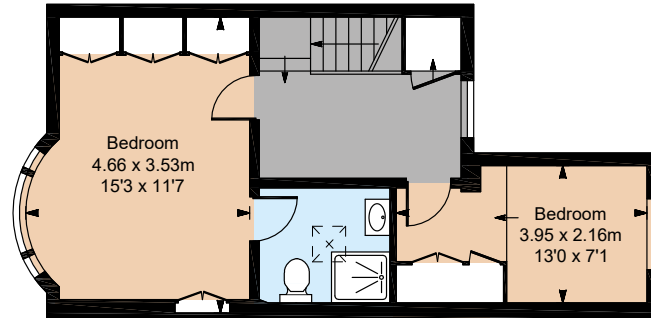
### Location

Located in the South Kensington area, Clareville Street benefits from a wealth of nearby amenities, including trendy cafes, restaurants, shops, and green spaces. For transport, the property is conveniently located near both Gloucester Road and South Kensington Underground stations, offering access to the District, Circle, and Piccadilly lines - providing easy access to the rest of London.

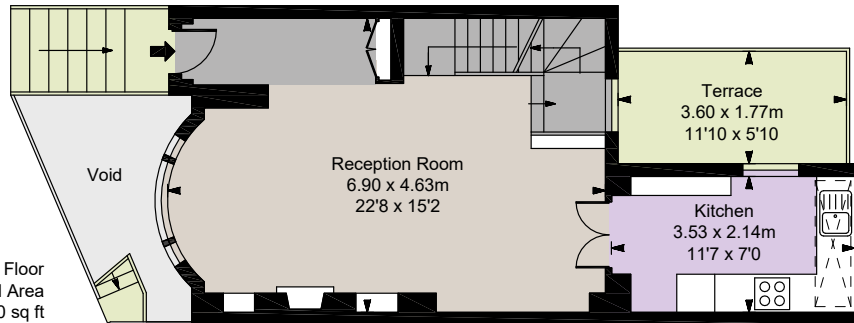




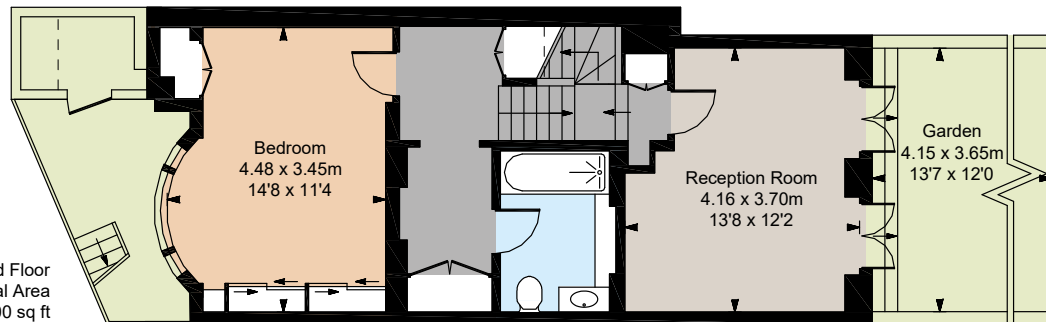




First Floor  
Approximate Gross Internal Area  
35.81 sq m / 385 sq ft



Ground Floor  
Approximate Gross Internal Area  
39.05 sq m / 420 sq ft



Lower Ground Floor  
Approximate Gross Internal Area  
46.41 sq m / 500 sq ft

## Floorplans

Gross internal area 1,305 sq ft (121.27 sq m)

For identification purposes only.

## General

Tenure: Freehold

Local Authority: The Royal Borough of Kensington and Chelsea

Council Tax: Band G

EPC Rating: D

Parking: The Royal Borough of Kensington and Chelsea residents parking

Broadband: Yes

**IMPORTANT NOTICE:** Strutt & Parker gives notice that: 1. These particulars do not constitute an offer or contract or part thereof. 2. All descriptions, photographs and plans are for guidance only and should not be relied upon as statements or representations of fact. All measurements are approximate and not necessarily to scale. Any prospective purchaser must satisfy themselves of the correctness of the information within the particulars by inspection or otherwise. 3. Strutt & Parker does not have any authority to give any representations or warranties whatsoever in relation to this property (including but not limited to planning/building regulations), nor can it enter into any contract on behalf of the Vendor. 4. Strutt & Parker does not accept responsibility for any expenses incurred by prospective purchasers in inspecting properties which have been sold, let or withdrawn. 5. We are able to refer you to SPF Private Clients Limited ("SPF") for mortgage broking services, and to Alexander James Interiors ("AJI"), an interior design service. Should you decide to use the services of SPF, we will receive a referral fee from them of 25% of the aggregate of the fee paid to them by you for the arrangement of a mortgage and any fee received by them from the product provider. Should you decide to use the services of AJI, we will receive a referral fee of 10% of the net income received by AJI for the services they provide to you. 6. If there is anything of particular importance to you, please contact this office and Strutt & Parker will try to have the information checked for you. Photographs taken April 2025. Particulars prepared April 2025. Strutt & Parker is a trading style of BNP Paribas Real Estate Advisory & Property Management UK Limited

## South Kensington

90 Old Brompton Road, London, SW7 3LQ

**020 7581 7000**

[southken@struttandparker.com](mailto:southken@struttandparker.com)

[struttandparker.com](http://struttandparker.com)



@struttandparker

Over 50 offices across England and Scotland,  
including Prime Central London

For the finer things in property.

