

Clonmel Road

London, SW6



A spectacular and rarely available 3 bedroom flat, with a huge roof terrace.

The flat offers one of the best roof terraces in Parsons Green, along with flexible accommodation arranged over two floors, including two generous bathrooms.



1 RECEPTION ROOM



2 BEDROOMS



3 BATHROOMS



LEASEHOLD



1,369 SQ FT



**GUIDE PRICE
£1,250,000**



The property

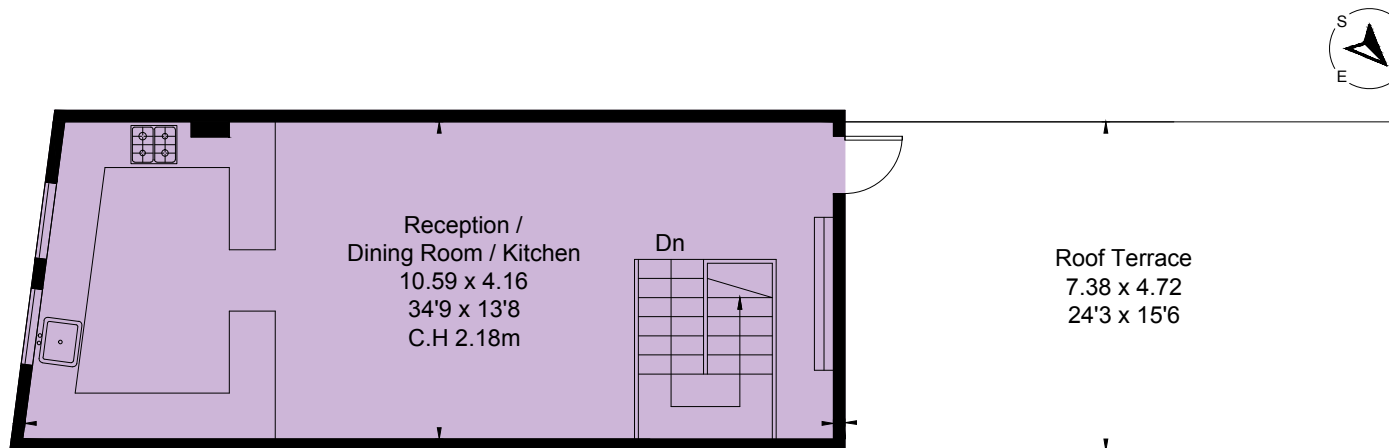
Laid out over the top two floors of this Victorian building, the flat boasts 1,369 sq ft of internal space and a very large and sunny roof terrace with far reaching views. The second floor offers potential to use the flat as either a two bedroom, with a large reception room, or as a three bedroom, two bathroom. The top floor provides an excellent triple aspect, open plan kitchen/reception room with access to the roof terrace.

Location

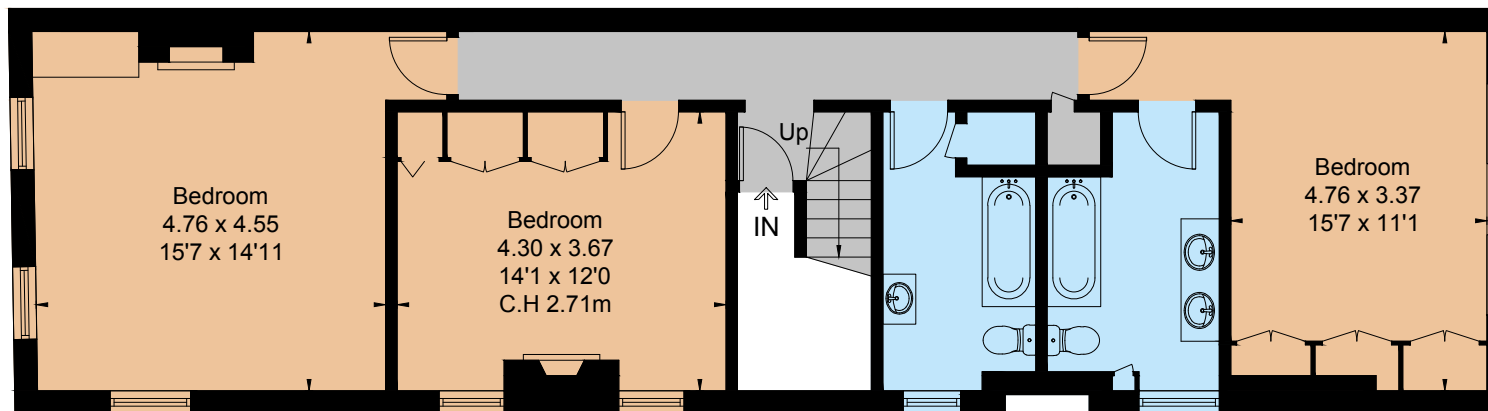
Located at the southern end of Clonmel Road the flat is on the doorstep of a multitude of shops and restaurants of Fulham Road and Parsons Green. Parsons Green Station (District Line) is 0.15 miles away.







Third Floor



Second Floor

IMPORTANT NOTICE: Strutt & Parker gives notice that: 1. These particulars do not constitute an offer or contract or part thereof. 2. All descriptions, photographs and plans are for guidance only and should not be relied upon as statements or representations of fact. All measurements are approximate and not necessarily to scale. Any prospective purchaser must satisfy themselves of the correctness of the information within the particulars by inspection or otherwise. 3. Strutt & Parker does not have any authority to give any representations or warranties whatsoever in relation to this property (including but not limited to planning/building regulations), nor can it enter into any contract on behalf of the Vendor. 4. Strutt & Parker does not accept responsibility for any expenses incurred by prospective purchasers in inspecting properties which have been sold, let or withdrawn. 5. We are able to refer you to SPF Private Clients Limited ("SPF") for mortgage broking services, and to Alexander James Interiors ("AJI"), an interior design service. Should you decide to use the services of SPF, we will receive a referral fee from them of 25% of the aggregate of the fee paid to them by you for the arrangement of a mortgage and any fee received by them from the product provider. Should you decide to use the services of AJI, we will receive a referral fee of 10% of the net income received by AJI for the services they provide to you. 6. If there is anything of particular importance to you, please contact this office and Strutt & Parker will try to have the information checked for you. Photographs taken July 2025. Particulars prepared July 2025. Strutt & Parker is a trading style of BNP Paribas Real Estate Advisory & Property Management UK Limited

Floorplans

Gross internal area 1,369 sq ft (127.2 sq m)
For identification purposes only.

General

Tenure: Leasehold, 150 years 8 months remaining

Local Authority: The London Borough of Hammersmith and Fulham

Service Charge: TBC

Ground Rent: TBC

Council Tax: Band G

EPC Rating: E

Parking: Resident's parking permit available

Broadband: Installed

Fulham

701 Fulham Road, London SW6 5UL

020 7731 7100

fulham@struttandparker.com
struttandparker.com



@struttandparker

Over 50 offices across England and Scotland,
including Prime Central London

For the finer things in property.

